



**HENDERSON
CONNELLAN**
ESTATE AGENTS

Derwent Crescent, Kettering NN16

"Bigger and Better"

3 1 1



"Bigger and Better"

Situated in this popular area of town location is this fabulous, three bedroom semi detached home that has been significantly extended to the ground floor. Offered to the market with NO CHAIN. The house has been refurbished throughout to exacting standards. The property comprises a welcoming entrance hall, bathroom, cosy living room, wonderful kitchen/dining/family space complete with a well-equipped kitchen. Upstairs expect to find three excellent sized bedrooms, two of which are double in size. Outside there driveway providing off road parking in front of the garage. The garden is an amazing space with patio, good sized lawned area and established plantings. Just a short walk to the town centre, mainline railway station, hospital and a whole range of amenities within easy reach. Contact Henderson Connellan today to arrange your viewing!

Living Room - 4.9m x 3.96m (16'1" x 13'0")

Kitchen/Dining/Family - 5.77m x 4.29m (18'11" x 14'1")

Bathroom - 1.88m x 1.7m (6'2" x 5'7")

Bedroom One - 3.53m x 2.87m (11'7" x 9'5")

Bedroom Two - 4.52m x 2.39m (14'10" x 7'10")

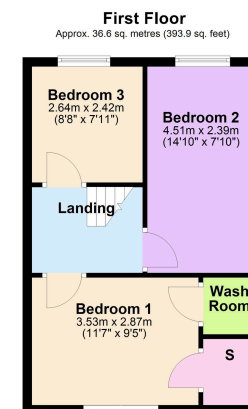
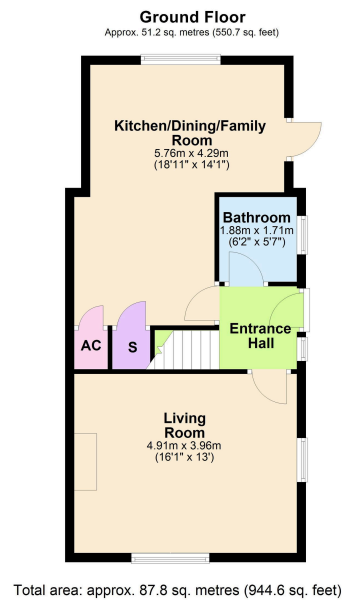
Bedroom Three - 2.64m x 2.41m (8'8" x 7'11")

Wash Room





- NO CHAIN
- Extended ground floor accommodation
- Highly desirable location
- Three-bedrooms
- Semi-detached
- Off road parking
- Garage
- Lovely Garden
- EPC RATING: D
- COUNCIL TAX: C



Disclaimer: These particulars do not form part of any offer or contract and should not be relied upon as statements or representations of fact. Any areas, measurements of distances are approximate. The text, photographs and plans are for guidance only and are not necessarily comprehensive.

15-16 Market Place, Kettering,
Northamptonshire, NN16 0AJ

