



**HENDERSON
CONNELLAN**
ESTATE AGENTS

The Jitty, Mawsley NN14

"Room For All The Family"

3 3 0



"Room For All The Family"

This stunning home offers a surprisingly large interior perfect for family living, situated in this most desirable village. Benefitting from gas central heating and UPVC double glazing the entrance hall has innovative storage options, there is a guest cloakroom, stunning designer kitchen/ dining room with integrated oven and hob as well as space for a dining table, the living room is a great size with bi-folding doors creating an open aperture to the garden. Upstairs there is a principal bathroom and three double bedrooms, the main bedroom with en-suite shower room. Outside is just as impressive with a well kept fore garden with slate style pathway to the front door, the lovely split level garden is well kept with bespoke garden pod perfect for home working or as a garden retreat. Mawsley offers a great infrastructure with Doctors, Dentist, Village Store, Indian Restaurant, primary school and lovely village walks!

Living Room - 5.92m x 3.25m (19'5" x 10'8")

Kitchen - 4.04m x 3.84m (13'3" x 12'7")

WC - 1.45m x 1.42m (4'9" x 4'8")

Bedroom 1 - 4.24m x 3m (13'11" x 9'10")

Bedroom 2 - 3.18m x 2.84m (10'5" x 9'4")

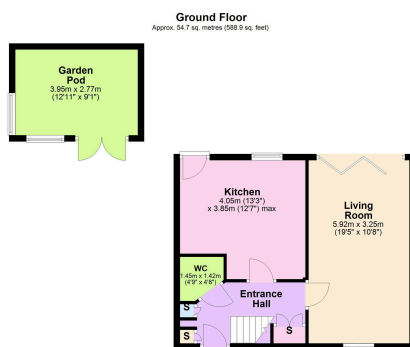
Bedroom 3 - 3.73m x 2.72m (12'3" x 8'11")

Bathroom - 2.24m x 2.06m (7'4" x 6'9")

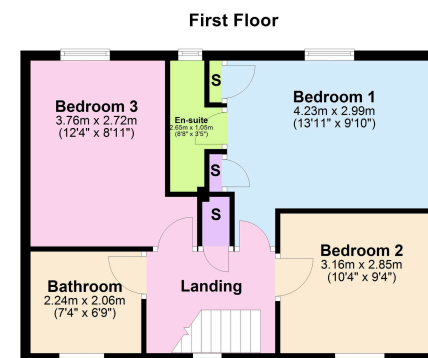




- Spacious accommodation throughout
- Off road parking
- Modernised throughout
- Sought after location
- COUNCIL TAX: D
- Single garage
- Three double bedrooms
- Outbuilding
- EPC RATING: PENDING



Total area: approx. 103.1 sq. metres (1109.9 sq. feet)



Disclaimer: These particulars do not form part of any offer or contract and should not be relied upon as statements or representations of fact. Any areas, measurements of distances are approximate. The text, photographs and plans are for guidance only and are not necessarily comprehensive.

15-16 Market Place, Kettering,
Northamptonshire, NN16 0AJ

