

Highfield Road, Kettering NN15

£200,000

3 1 1



"Now you see it..." and soon you won't! This impressive three-bedroom mid-mews home is located on this popular road within easy reach of the town centre, local amenities just a short walk from the mainline railway station with links to London St Pancras in under an hour. The interior includes an entrance hallway, guest cloakroom, spacious living room and kitchen/dining room complimented by an additional useful room that could become a home office or utility room if required. Upstairs you will find the shower room and three bedrooms, all of which are double in size. The frontage is neatly kept and there is an enclosed rear garden. This property is sure to attract strong interest! Call us today to book a private viewing.



15-16 Market Place, Kettering, Northamptonshire, NN16 0AJ

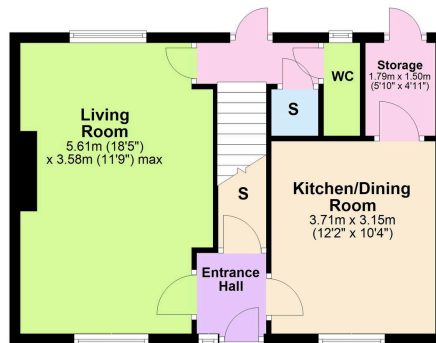


Key Features

- Mid Mews
- Gas Central Heating
- Spacious Interior
- EPC Rating: PENDING
- No Chain
- Three Double Bedrooms
- UPVC Double Glazed Windows
- Convenient Location
- Council Tax: A
-

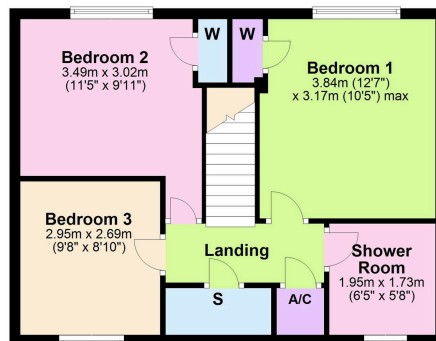
Ground Floor

Approx. 44.6 sq. metres (480.3 sq. feet)



First Floor

Approx. 48.5 sq. metres (521.6 sq. feet)



Total area: approx. 93.1 sq. metres (1001.9 sq. feet)



15-16 Market Place, Kettering, Northamptonshire, NN16 0AJ