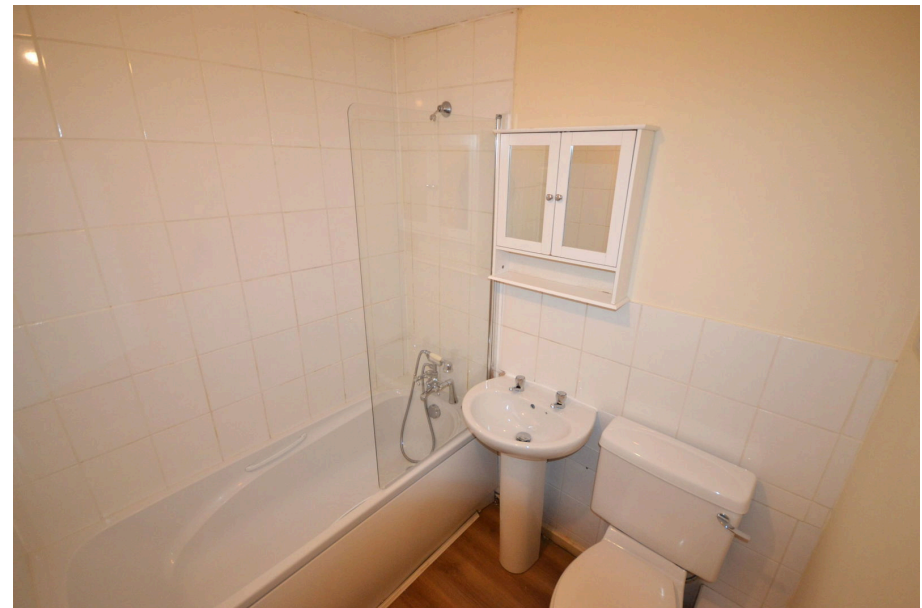




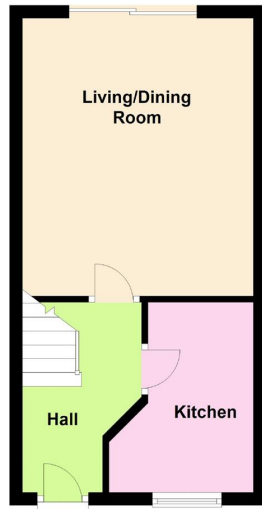
**HENDERSON
CONNELLAN**
ESTATE AGENTS

Merrivale Close, Kettering
£950PCM (Deposit: £950)

🛏️ 2 🪑 1 🚗 1

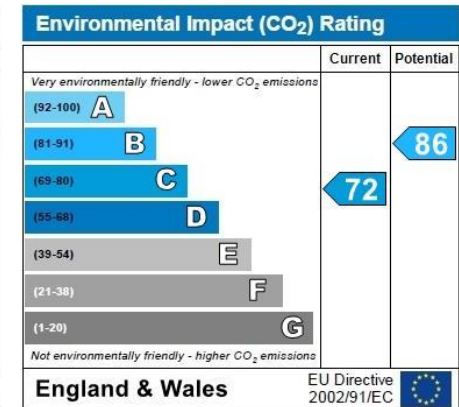
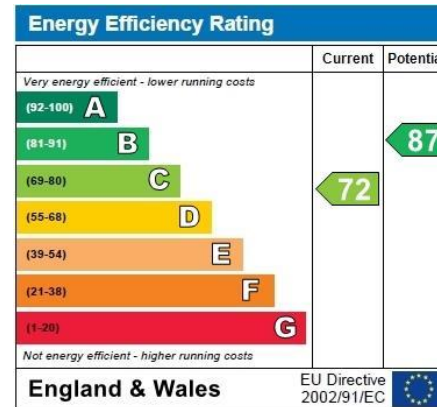


Ground Floor



Tax Band: Furnished: Not specified

'Spaced Out' This lovely 2 bedroom mid terraced house is a winner! Situated in Kettering Leisure Village, only just around the corner from the Kettering Conference Centre and health club. The property has a generously fitted kitchen and a spacious lounge/dining area with doors that lead out to the garden. To the first floor expect to see two bedrooms, one with built in storage and a family bathroom. Generous frontage and two parking spaces. Don't miss out call 01536 416555 to view! Available now! EPC Rating: C Council Tax Band: B



15-16 Market Place, Kettering, Northamptonshire, NN16 0AJ

