



**HENDERSON  
CONNELLAN**  
ESTATE AGENTS

Queen Street, Geddington, Kettering NN14  
Creativity, Exquisite Taste and Precision

🛏️ 5 🚿 3 🚗 4

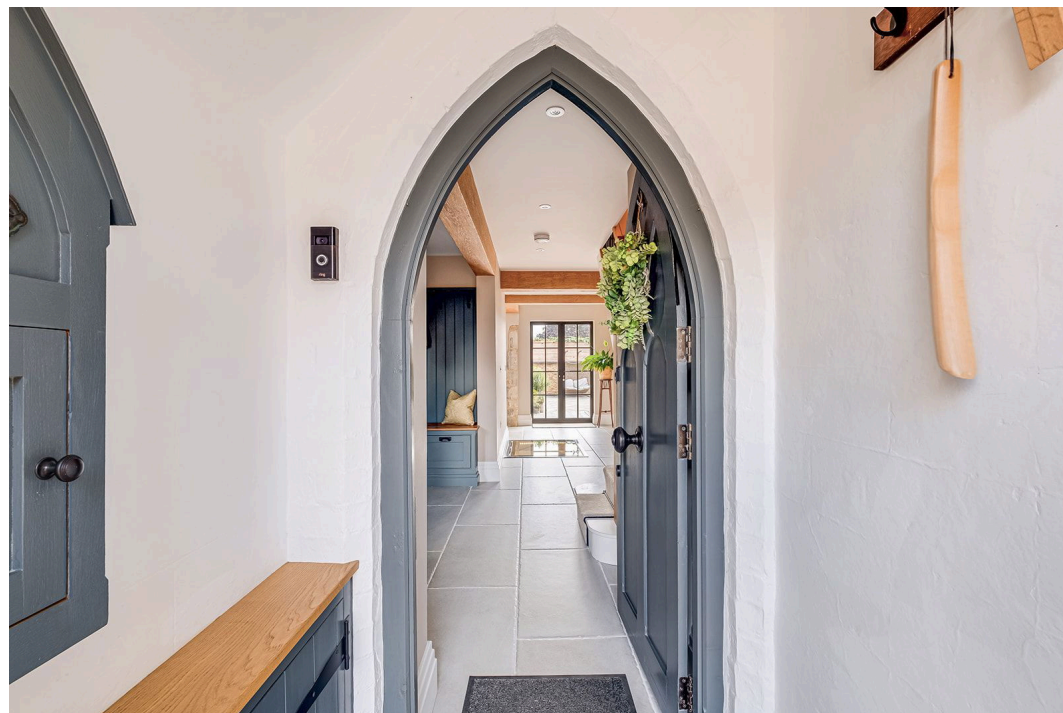


**Creativity, Exquisite Taste and Precision have combined to create the inspirational interior of this beautifully appointed, extended detached residence known as Stonehouse.**

The striking architecture has Gothic hints with distinct stonework and timber detailing. The current owners beautifully designed and completed a full renovation in 2021, creating an exquisite interior to include an Entrance Hall with a feature glazed access to the cellar, which can be illuminated by night, as well as bespoke cloaks cupboards and tiled flooring in Limestone design which flows through much of the ground floor, benefiting from underfloor heating throughout. The bespoke Kitchen/Dining/Family Room was crafted by "Hallwood furniture" designed and finished to an exacting standard with quality integrated appliances, Quartz worksurfaces and a central island; vaulted ceilings amplify the scale of the room which opens to the significant Dining/Family Room with complimenting bespoke storage and media cupboard, the perfect family and social space. The stunning and versatile study/snug enjoys the warmth of an open fire, and there is a most impressive Utility/Boot Room with handmade cabinetry. Upstairs, five Bedrooms are arranged over two floors with a sumptuous principal Bathroom with roll top bath and separate shower enclosure as well as three Bedrooms to the first floor; the second floor offers the option of a self-contained suite, which includes two Bedrooms, living area and a shower room. Beautiful windows complement the look with colonial shutters.

As part of the complete renovation, Stone House benefits from brand-new state-of-the-art gas central heating, with underfloor heating on the ground floor and cast-iron radiators on the first and second floors. Underfloor heating and heated towel rails in the bathrooms operate independently from the main central heating, for use during warmer months. A brand-new electric installation, including all wiring and CAT 6 internet cabling to each room and the stylish bronze casement switches and sockets, a security alarm system, CCTV monitoring/recording, and external lighting, all operated from a central server cupboard, also new fire and Co2 alarms have been fitted throughout.

Outside, the property benefits from a large, sweeping gravel driveway, providing parking for several vehicles and access to the existing garage and storage shed, which has the advantage of power and lighting. A beautiful brick archway leads you to the secluded courtyard designed with a Mediterranean feel, with specialist lighting providing evening illumination and multiple external electric sockets. Another brick archway and stunning wrought iron gate, handmade by a local ironmonger, leads to the manicured gardens that feature immaculate lawns, stone and red brick walling completed with beautiful pleached trees to the entire boundary, further seating areas, and a hand-built playhouse.





- Detached Property
- High Specification Interior
- Beautiful Landscaped Gardens
- EPC RATING: D
- Five Bedrooms
- Bespoke Kitchen/Dining Family By Cabinet Makers Hallwood Furniture
- Lovely Village Setting
- COUNCIL TAX: G



Disclaimer: These particulars do not form part of any offer or contract and should not be relied upon as statements or representations of fact. Any areas, measurements of distances are approximate. The text, photographs and plans are for guidance only and are not necessarily comprehensive.

15-16 Market Place, Kettering, Northamptonshire, NN16 0AJ

