



**HENDERSON
CONNELLAN**
ESTATE AGENTS

Sandringham Court, Kettering NN15

"Fine Living"

🛏️ 2 🚿 1 🛋️ 2



"Fine Living"

This immaculately presented mid mews home is situated on this most desirable development within easy reach of a wealth of amenities and the A14. The stunning interior includes an entrance vestibule, living room, designer kitchen with integrated oven and hob, two generous bedrooms and a principal bathroom. Gas central heating and UPVC windows complete the inside. Outside there is parking for two cars and well-kept front and rear garden. A great home with an up to date interior.

Living Room - 4.8m x 3.1m (15'9" x 10'2")

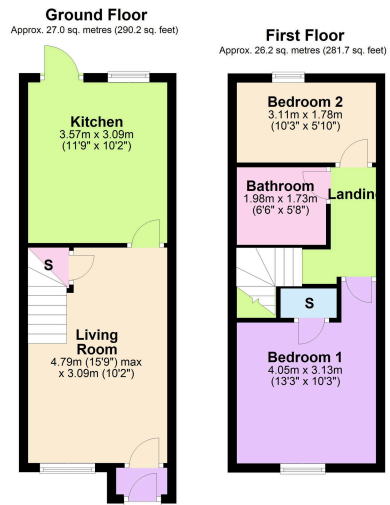
Kitchen - 3.51m x 3.1m (11'6" x 10'2")

Bedroom One - 3.12m x 3.12m (10'3" x 10'3")

Bedroom Two - 3.12m x 1.78m (10'3" x 5'10")

Bathroom - 1.98m x 1.73m (6'6" x 5'8")





Total area: approx. 53.1 sq. metres (572.0 sq. feet)

- Terraced House
- Gas central Heating
- EPC RATING: D
- Two Bedrooms
- Parking for Two Cars
- COUNCIL TAX: B



Disclaimer: These particulars do not form part of any offer or contract and should not be relied upon as statements or representations of fact. Any areas, measurements of distances are approximate. The text, photographs and plans are for guidance only and are not necessarily comprehensive.

15-16 Market Place, Kettering,
Northamptonshire, NN16 0AJ

