



**HENDERSON
CONNELLAN**
ESTATE AGENTS

Thurston Drive, Kettering

"An Exclusive Residence..."

4 2 3



"An Exclusive Residence..."

This fabulous detached residence built by Persimmon Homes is situated on the popular Leisure Village. The light and spacious accommodation benefits from gas central heating and UPVC double glazing to include entrance hall, guest cloakroom, versatile study/playroom, living room with minster style fireplace, stunning and recently extended designer kitchen/dining room with Silestone work surfaces extending to a family room and dining area with bifolding doors leading to the beautifully landscaped gardens. To the first floor you can expect to see a family bathroom and four double bedrooms, three of which benefit from air conditioning, the master features built in wardrobes and en suite facilities. Outside the enclosed rear garden is beautifully maintained and enjoys a large composite decking area ideal for alfresco dining. To the front of the property you will find a landscaped foregarden, and a driveway leading to a double garage and parking for two cars. Exceptional!

Sitting Room

15'1 x 12'2

Kitchen/Dining/Living Room

28'5 X 15'9

WC

6'2 x 2'11

Study/Playroom

9'8 x 7'4

Utility Room

8'10 x 7'4

Bedroom One

14'10 x 10'9

Ensuite

7'6 x 5'9

Bedroom Two

11' x 11'

Bedroom Three

11'1 x 10'9

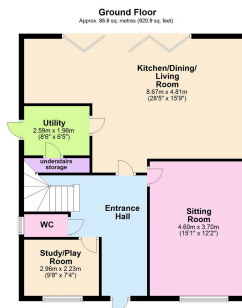
Bedroom Four

9'11 x 8'2

Bathroom

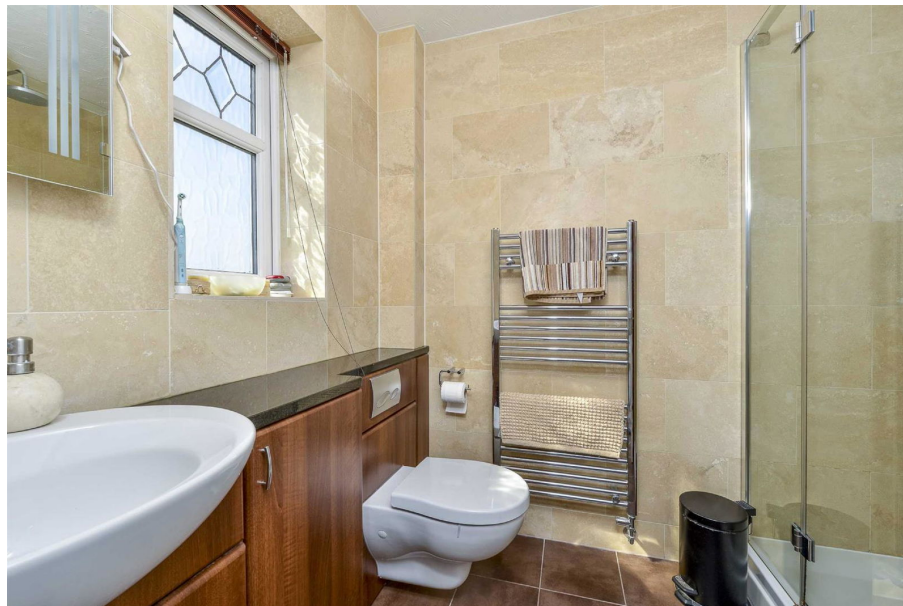
8' x 7'2





Total area: approx. 155.3 sq. metres (1671.1 sq. feet)

- Detached House
- Four Bedrooms
- Ensuite and Family Bathroom
- Utility Room
- Leisure Village
- Guest Cloak Room
- Parking
- Double Garage
- EPC RATING: PENDING
- COUNCIL TAX: E



15-16 Market Place, Kettering,
Northamptonshire, NN16 0AJ

Disclaimer: These particulars do not form part of any offer or contract and should not be relied upon as statements or representations of fact. Any areas, measurements of distances are approximate. The text, photographs and plans are for guidance only and are not necessarily comprehensive.

