



**HENDERSON
CONNELLAN**
ESTATE AGENTS

Wood Street, Kettering NN16

"Off the Starters Block"

3 1 2



"Off the Starters Block"

Act quickly and come and take a look at this three-bedroom terraced property is located on this popular road just a short distance from Park Road School and the Rockingham pleasure park with Victorian band stand. The town centre, hospital and mainline railway station with access to London St Pancras in under an hour are also just a short distance away. The interior comprises entrance hallway with mosaic tiled flooring, living room complete with log burner, formal dining room, well-appointed kitchen and bathroom. Upstairs there are three generous bedrooms, two of which are double in size. The gardens are a good size and offer a high degree of privacy. A property sure to gather strong interest. Call us to book a private viewing today.

Living Room - 3.3m x 3.3m (10'10" x 10'10")

Dining Room - 3.66m x 3.35m (12'0" x 11'0")

Kitchen - 3.58m x 2.24m (11'9" x 7'4")

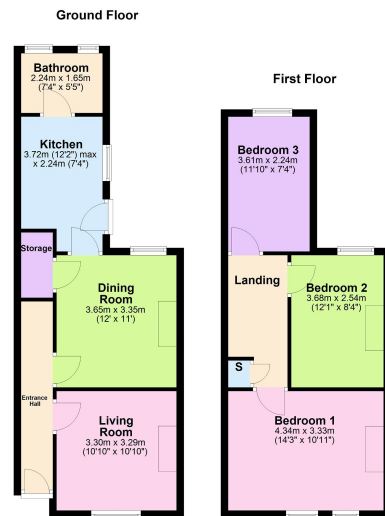
Bathroom - 2.24m x 1.65m (7'4" x 5'5")

Bedroom One - 4.34m x 3.33m (14'3" x 10'11")

Bedroom Two - 3.66m x 2.54m (12'0" x 8'4")

Bedroom Three - 3.61m x 2.21m (11'10" x 7'3")





Total area: approx. 81.0 sq. metres (872.1 sq. feet)

- Terraced House
- Three Bedrooms
- Two Receptions
- No Chain
- EPC RATING: D
- COUNCIL TAX: A
- Rear Garden
- Character Features
- Ground Floor Bathroom
- Gas Central Heating



Disclaimer: These particulars do not form part of any offer or contract and should not be relied upon as statements or representations of fact. Any areas, measurements of distances are approximate. The text, photographs and plans are for guidance only and are not necessarily comprehensive.

15-16 Market Place, Kettering, Northamptonshire, NN16 0AJ

