



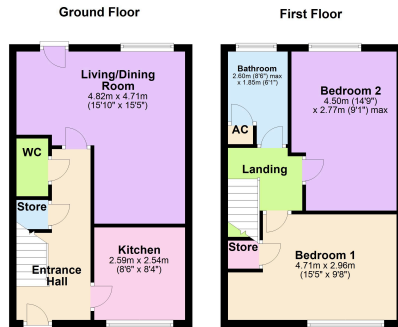
**HENDERSON
CONNELLAN**
ESTATE AGENTS

Tresham Close, Kettering

£925PCM

🛏️ 2 🚿 1 🚪 1





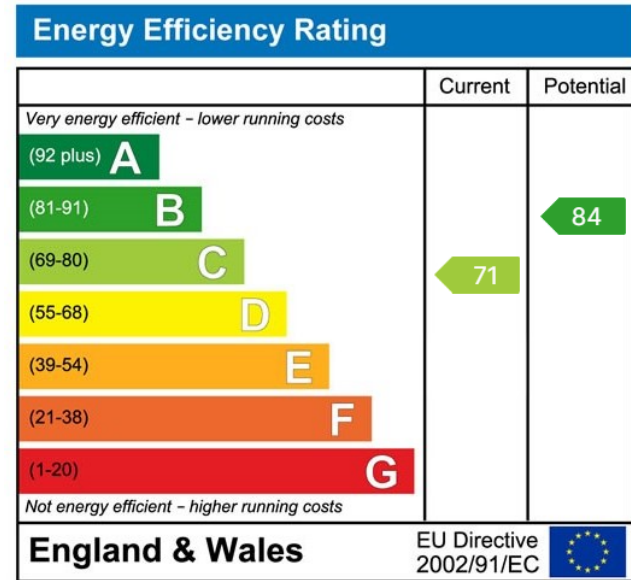
Total area: approx. 70.6 sq. metres (759.9 sq. feet)



Tax Band: B Furnished: Not specified

"Make Your Move"

This modern, two-bedroom terraced home is nestled within this small, select close in Kettering. This ultra-convenient location is just a short walk from the mainline railway station with links to London St Pancras in under an hour, town centre, local amenities and schools. Offered to the market with



15-16 Market Place, Kettering, Northamptonshire, NN16 0AJ

