



**HENDERSON
CONNELLAN**
ESTATE AGENTS

Kettonby Gardens, Kettering

"Garden Apartment"

🛏️ 2 🍽️ 1 🚗 1



"Garden Apartment"

Are you looking for lateral living, a bungalow alternative? Discreetly positioned just off the very desirable Headlands, this seriously impressive ground floor apartment is within easy reach of the town centre, Restaurant/Cultural Quarter and the mainline railway, reaching St Pancras in less than an hour. Stylish and versatile, the interior benefits from gas central heating and UPVC double glazed windows to include an entrance hall, living/dining room with bay window and double doors to the lovely communal gardens. The kitchen is well appointed with an integrated stainless steel oven and hob, there is a sumptuous bathroom and two double bedrooms. Outside the apartment has a small patio area with steps down to the beautifully kept communal gardens which provide a lovely leafy backdrop. Convenient Urban Living!

Living/Dining Room

4.98m x 3.61m (16'4 x 11'10)

Kitchen

2.69m x 2.34m (8'10 x 7'8)

Bedroom One

4.67m x 2.72m (15'4 x 8'11)

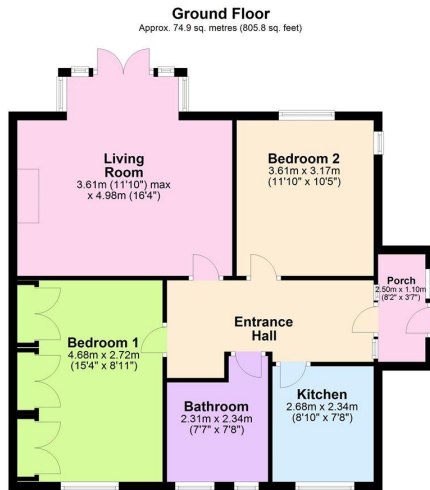
Bedroom Two

3.35m x 3.18m (11'100 x 10'5)

Bathroom

2.34m x 2.31m (7'8 x 7'7)





Total area: approx. 74.9 sq. metres (805.8 sq. feet)

- Ground Floor Apartment
- Two Bedrooms
- Large Communal Gardens
- Close to Town Centre
- EPC RATING: C
- COUNCIL TAX: C
- - Leasehold - 125 Years as off 1984
- Management fee is £70 Per calendar month.
- Ground Rent £100 per annum



15-16 Market Place, Kettering,
Northamptonshire, NN16 0AJ

Disclaimer: These particulars do not form part of any offer or contract and should not be relied upon as statements or representations of fact. Any areas, measurements of distances are approximate. The text, photographs and plans are for guidance only and are not necessarily comprehensive.

