



RESIDENTS
PARKING ONLY

RESIDENTS
PARKING ONLY

**HENDERSON
CONNELLAN**
ESTATE AGENTS

Orient House, Cobden Street, Kettering NN16

"Let There Be Light"

🛏️ 2 🍽️ 1 🚿 1



"Let There Be Light"

This fantastic second floor apartment is flooded with light from the impressive windows providing views across the roof tops. The stylish interior is well presented to include an entrance hall, fabulous free flowing kitchen/dining/living room with contemporary units and an integrated oven and hob. The two bedrooms are both very generous double rooms and the bathroom has a modern white suite. Security entry phone system, electric storage heating and sealed unit double glazed windows complete the inside. Outside there is allocated parking accessed via electric security gates. The town centre and a wealth of amenities are a moments walk away.

- The rent and service charge is combined - Rent portion is £303.71 per month - Service charge portion is £138.05 per month - Total paid per month = £441.76

- Spacious and well-presented apartment

- Electric heating

- Entrance hallway with storage cupboard

- Kitchen/Dining/Living Area - fabulous light filled open plan space with a range of base and eye level units, single drainer sink unit with mono bloc tap inset to roll top worksurfaces, integrated oven and four ring ceramic hob, space for fridge/freezer and washing machine (appliances are negotiable), living/dining space

- There are two extremely generous double bedrooms

- Bathroom suite comprising low level WC, pedestal wash hand basin with mono bloc tap, panel enclosed bathtub with shower and glass shower screen, heated towel rail and ceramic tiled splash backs

Outside there is an allocated parking space in the gated car park.

Kitchen/Dining/Living Room - 7.19m x 2.82m (23'7" x 9'3")

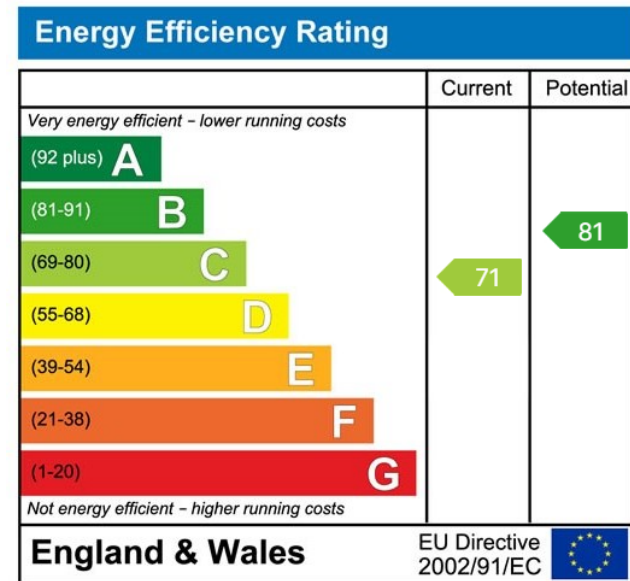
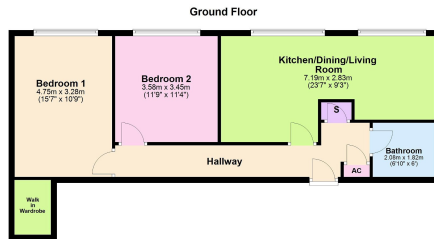
Bedroom 1 - 4.75m x 3.28m (15'7" x 10'9")

Bedroom 2 - 3.58m x 3.45m (11'9" x 11'4")

Bathroom - 2.08m x 1.83m (6'10" x 6'0")



- Second Floor Flat
- Shared Ownership 25% Share
- Parking
- Lease: 125 Years From 1st July 2008
- EPC RATING: C
- COUNCIL TAX: B



Disclaimer: These particulars do not form part of any offer or contract and should not be relied upon as statements or representations of fact. Any areas, measurements of distances are approximate. The text, photographs and plans are for guidance only and are not necessarily comprehensive.

15-16 Market Place, Kettering, Northamptonshire, NN16 0AJ

