

Measurements

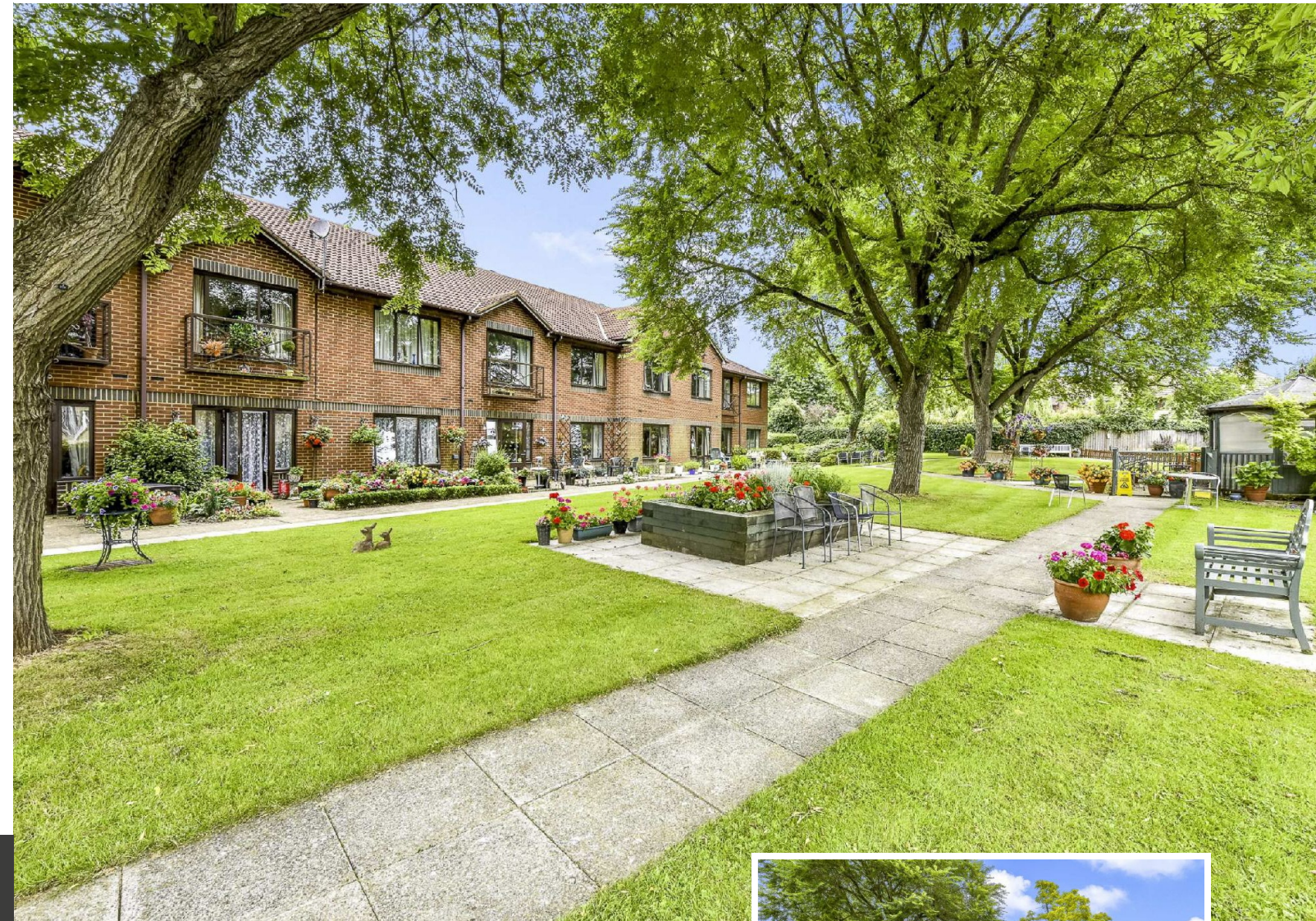
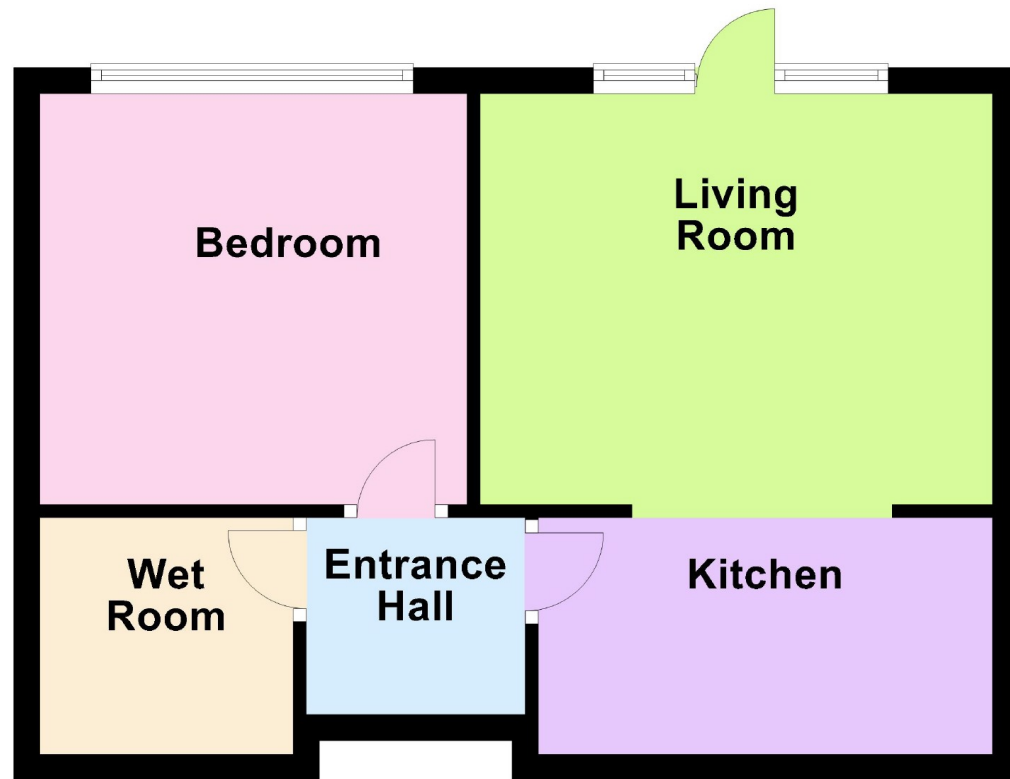
Living Room 12'5 x 10'5 (3.78m x 3.18m)

Kitchen 11'3 x 6'2 (3.43m x 1.88m)

Bedroom 10'9 x 10'5 (3.28m x 3.18m)

Wet Room 6'5 x 6' (1.96m x 1.83m)

Ground Floor



Disclaimer: These particulars do not form part of any offer or contract and should not be relied upon as statements or representations of fact. Any areas, measurements of distances are approximate. The text, photographs and plans are for guidance only and are not necessarily comprehensive.



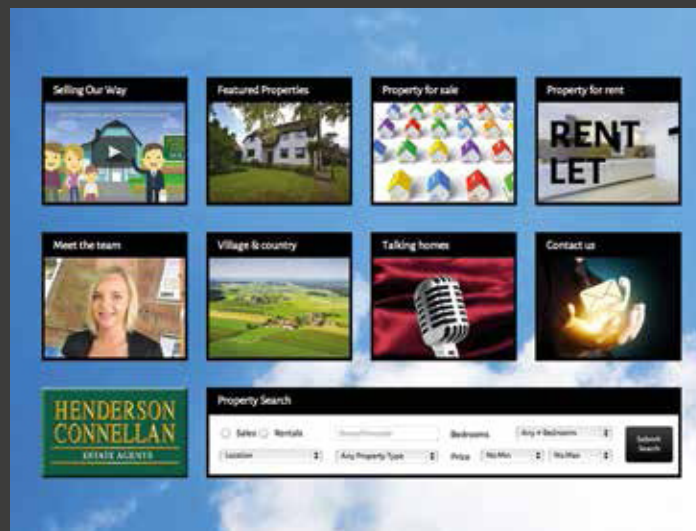
15-16 Market Place, Kettering, Northamptonshire NN16 0AJ

Sales (01536) 417888

email: ketteringsales@hendersonconnellan.co.uk

Lettings and Property Management (01536) 416555

email: bestlets@hendersonconnellan.co.uk





Sunley Court

Is a vibrant retirement community which is home to a wealth of on-site communal facilities. Our community is diverse, with people from different backgrounds and with differing needs for care. At Sunley court there are 40 individual homes all with living room, fully fitted kitchen with oven and hob, double bedroom and wet room and there are options to buy or you can take advantage of the shared ownership scheme from 50% for £80,000 to 90% for £144,000 or outright ownership from £160,000. The communal facilities include a restaurant, residents lounge, library, crafts room, launderette, hairdressing salon, wellbeing services and fabulous communal garden with greenhouse. If you would like some more information on any of the above or would like to book a private tour of Sunley Court please don't hesitate to call us on 01536 417888 and we can assist you.

Property highlights

- Options to buy or take advantage of the shared ownership scheme from 50% £80,000 to 90% £144,000 or outright ownership from £160,000
- Fully managed residential living with various levels of care available to suit your needs
- One bedroom retirement apartments with double glazed windows and electric heating. The interior comprises living room, kitchen with integrated oven and hob, double bedroom and wet room with low level WC, wash hand basin, wet room shower
- Warden control system with alarm activation in each room and entrance phone system
- Communal gardens, lounge, restaurant, activity rooms, salon, greenhouse and more

Gardens

The fabulous landscaped communal gardens wrap around Sunley Court providing a relaxing retreat to enjoy, socialise and participate in. The gardens have a range of different patio seating areas, beautifully laid lawn with attractively planted flowerbeds with a whole range of flowers, shrubs and trees. There is also a greenhouse for residents to use.



Sunley Court Pipers Hill Road, Kettering, NN15 7RJ

Prices From £160,000

