



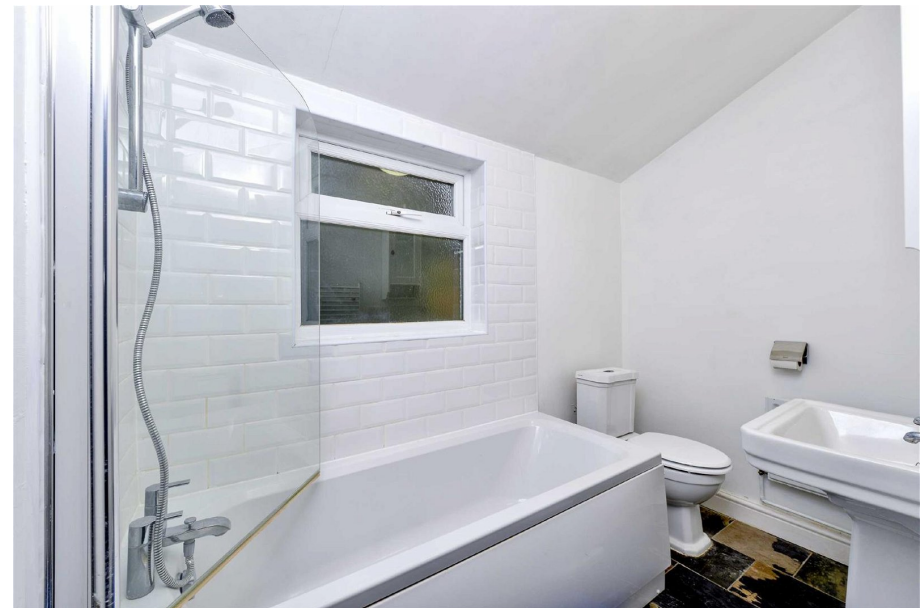
**HENDERSON  
CONNELLAN**  
ESTATE AGENTS



# Union Street, Kettering

Offers Over £190,000

3 2 2





## "Victorian Charm"

This beautifully presented Victorian bay fronted town house is ideally located close to the Restaurant/ Cultural Quarter, Midland main line station and general hospital. The generous interior comprises an entrance hall with access to the dining room and adjoining living room, both with period fireplaces, contemporary kitchen with integrated oven and hob and principal bathroom. Upstairs, there are three good sized bedrooms, two of which are double in size and a shower room. Outside, there is a walled courtyard garden leading to a further lawned area with brick outbuilding. The property is offered to the market with no onward chain and would make an ideal first time buy or investment.

EPC RATING: D COUNCIL TAX: A

### Living Room

12'3 x 11'1

### Dining Room

12'3 x 11'11

### Kitchen

8'1 x 10'

### Bedroom 1

15'11 x 11'2

### Bedroom 2

9'11 x 12'

### Bedroom 3

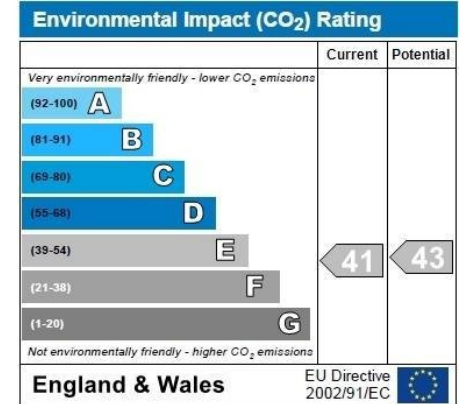
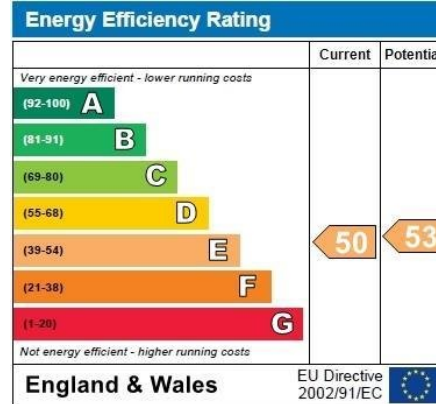
8' x 10'4

### Shower Room

2'3 x 6'8



- Terraced House
- Three Bedrooms
- Two Reception Rooms



Disclaimer: These particulars do not form part of any offer or contract and should not be relied upon as statements or representations of fact. Any areas, measurements of distances are approximate. The text, photographs and plans are for guidance only and are not necessarily comprehensive.

15-16 Market Place, Kettering, Northamptonshire, NN16 0AJ

