

# HUNT & NASH

Est. 1938

[www.huntandnash.co.uk](http://www.huntandnash.co.uk)

17 St Marks House Station Road  
Bourne End, SL8 5QF

**Price Guide £415,000**





## 17 St Marks House Station Bourne End, SL8 5QF

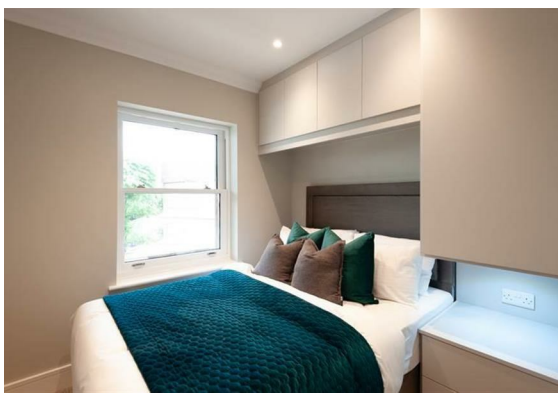
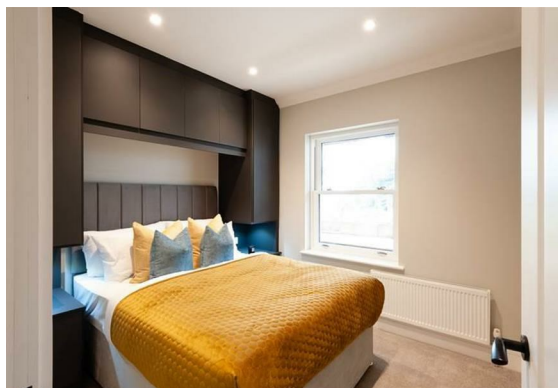
Lovely two double bedroom house with an open plan living room, a modern fitted kitchen, private paved garden and an allocated parking space, within a short walk of Bourne End Railway Station, River Thames and the village centre. To view please contact 01628 522568.

Bourne End is a sought after Thameside village with thriving shops, cafes and pubs, excellent schools and a rail station linking via Maidenhead to Central London (Elizabeth Line). The village is also conveniently placed for both the M40 (J4) and the M4 (J8/9). Heathrow Airport is approximately 18 miles distant. There are various sporting facilities and opportunities locally including golf at Beaconsfield, Sailing at Upper Thames Sailing Club and Cookham Reach plus Racing at Ascot and Windsor.

### HMRC Anti Money Laundering

Anti Money Laundering Regulations require all purchasers to produce valid identification documentation before receiving a contract to purchase.

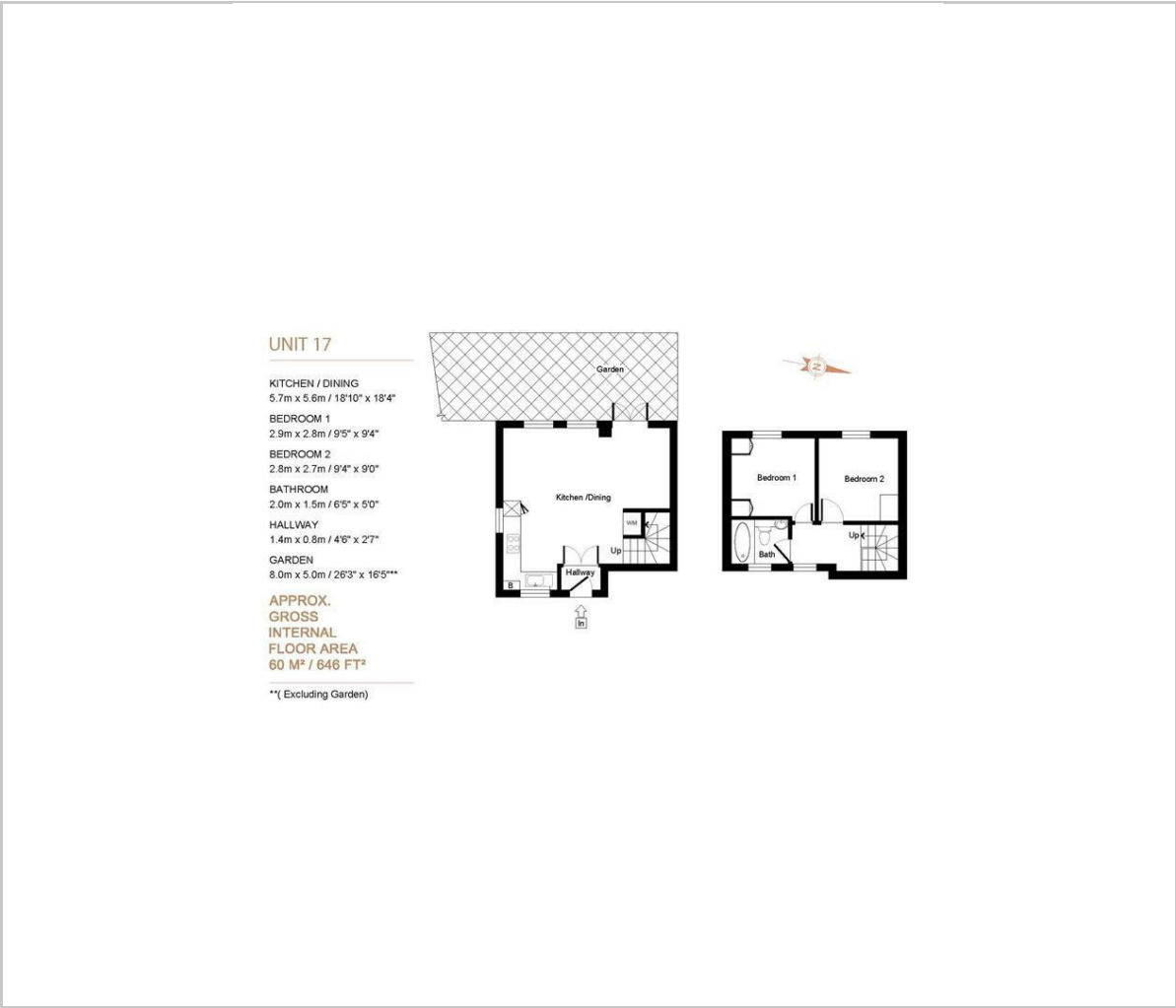
Any personal data collected by Hunt & Nash will only be used for the purposes of preventing money laundering and terrorist funding and further information is available on request as required under Article 13 of the GDPR







Floor Plan



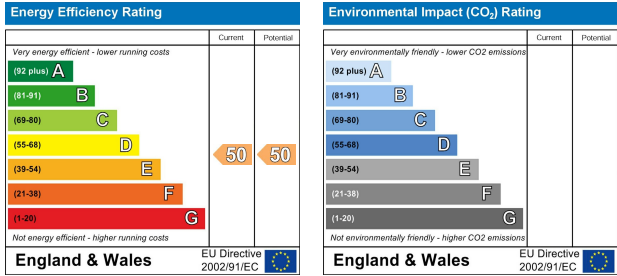
Viewing

Please contact our Bourne End Office on 01628 522 568 if you wish to arrange a viewing appointment for this property or require further information.

Area Map



Energy Efficiency Graph



These particulars, whilst believed to be accurate are set out as a general outline only for guidance and do not constitute any part of an offer or contract. Intending purchasers should not rely on them as statements of representation of fact, but must satisfy themselves by inspection or otherwise as to their accuracy. No person in this firms employment has the authority to make or give any representation or warranty in respect of the property.