



1 SILVER STREET

Weston-In-Gordano, BS20 8QA

Price £189,950

MAYFAIR
TOWN & COUNTRY

PROPERTY DESCRIPTION

Welcome to this charming one-bedroom cottage located on Silver Street in the picturesque village of Weston-In-Gordano. The property features an open-plan living space, good size bedroom and a bathroom. Whether you're looking for a starter home or a village setting, this property offers the perfect blend of comfort and convenience. Situated in a desirable location, you'll have easy access to local amenities and scenic walking paths. Don't miss out on the opportunity to make this lovely cottage your own and experience the beauty of country living in Weston-In-Gordano. Available with NO ONWARD CHAIN.

Situation

Weston in Gordano is a small, lively and friendly village situated in the picturesque Gordano Valley. The village offers easy access to great walking routes, including Middle Hill Common and connections to the Gordano Round. The village has a strong sense of community, and the Social Committee organises a range of events each year. There is an active Gardening Group holding regular meetings, and organising the infamous annual plant sale. In the village you will find the beautiful Church of St Peter and St Paul erected in the 12th Century. There also is a lovely village pub, The White Hart.

The local area

The local area*

3.6 miles - Hill Road, Clevedon

1.7 miles – Gordano School

3.0 miles – Portishead Marina

3.4 miles – Junction 20, M5

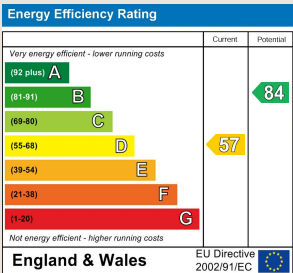
* Distances are approximate & sourced from Google Maps

Local Authority

Council Tax Band:

Tenure: Freehold

EPC Rating: D



PROPERTY DESCRIPTION

Open Plan Living

16'2 x 15'8 (4.93m x 4.78m)

Via front door leading into this light and airy room. Dual aspect room with front and rear aspect double glazed window, stone feature chimney breast with fire, stairs rising to first floor landing, understairs storage cupboard.

Kitchen area - fitted with a range of eye and base level units, inset electric cooker with gas hob, space for base level fridge, space and plumbing for washing machine, two radiators, space for dining table, exposed beams.

First Floor Landing

With doors to all rooms.

Bedroom One

12'7 x 9'4 (3.84m x 2.84m)

Front aspect double glazed window, build in wardrobes, tall radiator, television point, smooth ceiling.

Bathroom

9' x 6'6 (2.74m x 1.98m)

Rear aspect obscured double glazed window. Comprising shower cubicle, panel enclosed bath, low level WC, pedestal hand wash basin, heated towel rail, radiator, extractor fan, smooth ceiling

Agents Note

Under the 1979 Estate Agency Act, we are by law required to inform you that the above property Vendor is a relation to an employee of The Property Group (2010) trading as Mayfair Town & Country.

Material Information

Additional information not previously mentioned, we have been advised;

- Mains electric and gas. Water meter.
- Gas central heating.

For an indication of specific speeds and supply or coverage in the area, we recommend potential buyers to use the Ofcom checkers below:

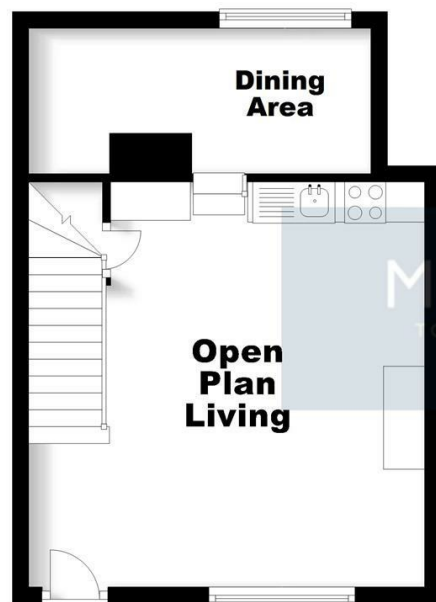
checker.ofcom.org.uk/en-gb/mobile-coverage

checker.ofcom.org.uk/en-gb/broadband-coverage

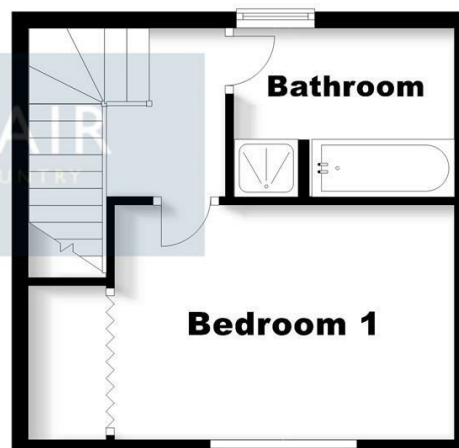
Flood Information:

flood-map-for-planning.service.gov.uk/location

Ground Floor



First Floor



For Illustrative Purposes Only:- all measurements, walls, doors, windows, fittings and appliances, their sizes and locations are shown conventionally and are approximate only and cannot be regarded as being a representation either by the Seller or his Agent. Copyright - Hobbs & Webb Plan produced using PlanUp.



TO ARRANGE A VIEWING OR FOR FURTHER INFORMATION ON THIS PROPERTY PLEASE CONTACT OUR SALES TEAM

01275 341400

clevelandon@mayfairproperties.net

IMPORTANT NOTICE

We would like to inform prospective purchasers that these sales particulars have been prepared as a general guide only. If there are any important matters likely to affect your decision to buy, please contact us before viewing the property.

1. Survey - A detailed survey has not been carried out, nor the services, appliances and fittings tested.
2. Floorplans All measurements walls, doors, windows, fittings and appliances, their sizes and locations are shown conventionally and are approximate and cannot be regarded as being representative either by the seller or his agent. Room sizes should not be relied upon for furnishing purposes and are approximate.
3. Mayfair Town & Country may make the following referrals and in exchange receive an introduction fee:
Simply Conveyancing up to £200 (plus VAT), HD Financial Ltd - introduction fee of up to £240 (plus VAT)

