



Flat B, Oakwood House Oak Road, Leatherhead, KT22 7UU

Price Guide £265,000

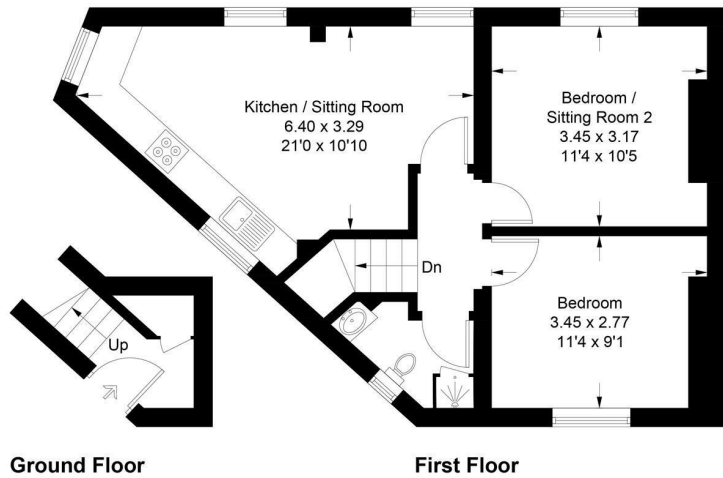
- TWO BEDROOM APARTMENT
- SHARE OF FREEHOLD
- IDEAL FIRST TIME BUY OR INVESTMENT
- MODERN FITTED KITCHEN
- LONG LEASE
- ALLOCATED PARKING SPACE
- CLOSE TO TRAIN STATION AND SHOPS
- NO ONWARD CHAIN
- TWO DOUBLE BEDROOMS
- NO ADDITIONAL CHARGES

This well presented two bedroom apartment comes to the market with no onward chain and is conveniently situated close to a mainline train station and local shops.

The property features a modern kitchen with beautiful parquet flooring and shower room, electric heating and double glazed windows. Outside there is one allocated parking space for the flat.



Approximate Gross Internal Area = 51.4 sq m / 553 sq ft



<b>Tenure</b>	Leasehold - Share of Freehold
<b>Lease</b>	999 years from 25/07/2019
<b>Service Charge</b>	£0
<b>Ground Rent</b>	£0
<b>EPC</b>	D
<b>Council Tax Band</b>	C

This plan is for layout guidance only. Not drawn to scale unless stated. Windows and door openings are approximate. Whilst every care is taken in the preparation of this plan, please check all dimensions, shapes and compass bearings before making decisions reliant upon them. (ID1111028) www.begshawandhardy.com © 2024

1-3 Church Street, Leatherhead, Surrey, KT22 8DN  
**Tel:** 01372 360078 **Email:** leatherhead@patrickgardner.com  
**www.patrickgardner.com**

These particulars, whilst believed to be accurate are set out as a general outline only for guidance and do not constitute any part of an offer or contract. Intending purchasers should not rely on them as statements of representation of fact, but must satisfy themselves by inspection or otherwise as to their accuracy. No person in this firms employment has the authority to make or give any representation or warranty in respect of the property.

