



12 Bridge Place Bridge Street, Leatherhead, KT22 8BF

Price Guide £230,000

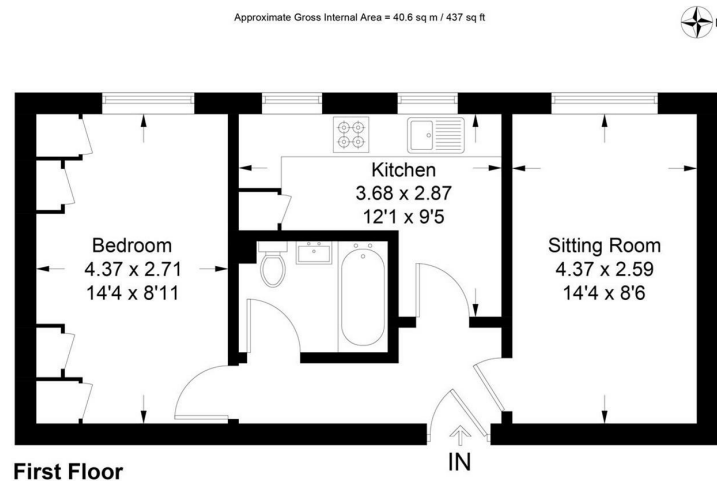


- 2ND FLOOR FLAT
- CLOSE TO THE TOWN CENTRE
- DOUBLE GLAZING
- LONG LEASE
- COUNCIL TAX B
- 1 LARGE DOUBLE BEDROOM
- FITTED KITCHEN WITH OVEN/HOB
- ALLOCATED PARKING SPACE
- NO CHAIN
- CLOSE TO MAINLINE STATION

This well laid out one bedroom second floor flat offers spacious accommodation with pleasant roof top views whilst a short walk from the scenic River Mole and town centre.

With a gas central heating system, double glazing, security entrance phone, the property includes 14'4 lounge/dining room with southwest aspect, modern fitted kitchen with built in oven/hob and fridge, one large double bedrooms (with built in wardrobes) and fully tiled bathroom with modern white suite.

Externally is undercover parking with an allocated space. No chain



This plan is for layout guidance only. Not drawn to scale unless stated. Windows and door openings are approximate. Whilst every care is taken in the preparation of this plan, please check all dimensions, shapes and compass bearings before making decisions reliant upon them. (ID1208382)  
www.bagshawandhardy.com © 2025

<b>Tenure</b>	Leasehold
<b>Lease</b>	974 Years Remaining
<b>Service Charge</b>	£2,152
<b>Ground Rent</b>	£87.04
<b>EPC</b>	C
<b>Council Tax Band</b>	B

1-3 Church Street, Leatherhead, Surrey, KT22 8DN  
**Tel:** 01372 360078 **Email:** leatherhead@patrickgardner.com  
**www.patrickgardner.com**

These particulars, whilst believed to be accurate are set out as a general outline only for guidance and do not constitute any part of an offer or contract. Intending purchasers should not rely on them as statements of representation of fact, but must satisfy themselves by inspection or otherwise as to their accuracy. No person in this firm's employment has the authority to make or give any representation or warranty in respect of the property.

