



21 Waterfields, Leatherhead, KT22 7XB

Price Guide £185,000



- GROUND FLOOR MAISONETTE
- OPEN PLAN LOUNGE WITH KITCHEN
- COMMUNAL GARDENS
- IDEAL FIRST TIME BUY OR INVESTMENT
- CAVITY WALL INSULATION

- LARGE DOUBLE BEDROOM
- OWN FRONT DOOR
- NO CHAIN
- REASONABLE SERVICE CHARGE
- CLOSE TO TOWN

Description

This bright and spacious (477 sqft) ground floor maisonette presents a great opportunity for a first time buyer or investor.

The accommodation comprises of an entrance hall leading to a white bathroom suite, a good sized double bedroom with built in storage, a fitted kitchen with built in oven and electric hob and a lounge/dining area.

The property has an up to date electrical installation condition report and gas safety test. The boiler is Worcester Bosch and is regularly serviced.

This property is being sold with no chain.

Tenure	Leasehold
EPC	C
Council Tax Band	B
Lease	84 Years Remaining
Service Charge	£879.32 pa
Ground Rent	£10 pa



Situation

Leatherhead town offers a comprehensive range of shopping facilities including the Swan Shopping Centre, theatre, Waitrose Local and Nuffield Health Fitness Gym. The public leisure centre is located on the edge of the town.

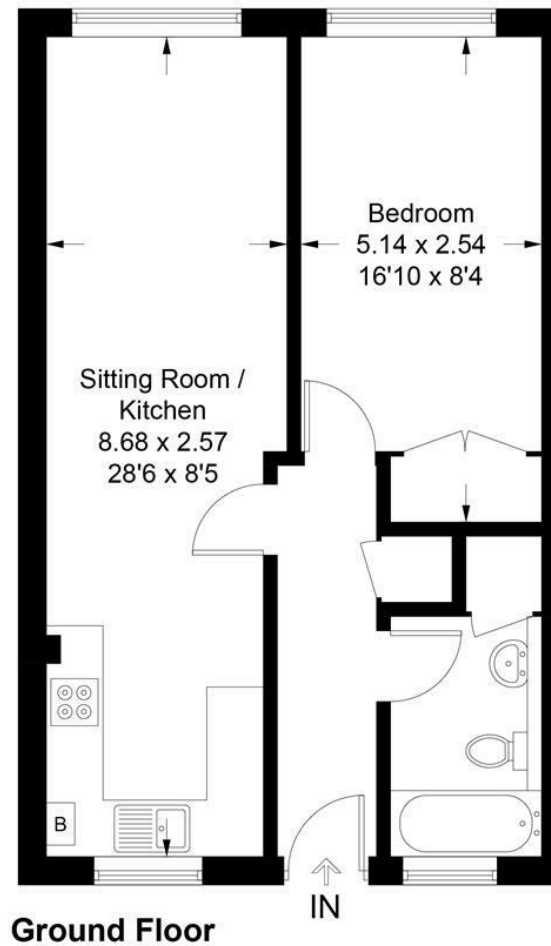
The main line railway station offers fast and frequent services north to London terminals and there are separate branch lines south to Dorking and Guildford. Junction 9 of the M25 is only a two-minute drive away, providing easy access to both Gatwick and Heathrow Airports.

There is a wide range of quality private and state schooling in the general area including for older children, St Andrew's RC School and Therfield Secondary School.

In the near vicinity there are hundreds of acres of Green Belt countryside much of which is National Trust owned. On the doorstep are Polesden Lacey, Bocketts farm and Epsom Downs where the famous Derby is held.



Approximate Gross Internal Area = 45.8 sq m / 493 sq ft



Ground Floor

This plan is for layout guidance only. Not drawn to scale unless stated. Windows and door openings are approximate. Whilst every care is taken in the preparation of this plan, please check all dimensions, shapes and compass bearings before making decisions reliant upon them. (ID1197423)

1-3 Church Street, Leatherhead, Surrey, KT22 8DN
Tel: 01372 360078 **Email:** leatherhead@patrickgardner.com
www.patrickgardner.com

These particulars, whilst believed to be accurate are set out as a general outline only for guidance and do not constitute any part of an offer or contract. Intending purchasers should not rely on them as statements of representation of fact, but must satisfy themselves by inspection or otherwise as to their accuracy. No person in this firm's employment has the authority to make or give any representation or warranty in respect of the property.

