



19 Cleeve Road, Leatherhead, KT22 7NG

Price Guide £547,500



- SEMI-DETACHED HOUSE
- 2 BATHROOMS
- MODERN KITCHEN
- 60FT SOUTH FACING GARDEN
- OFF STREET PARKING
- 4 BEDROOMS
- LARGE LIVING/DINING ROOM
- SEPARATE UTILITY ROOM
- GARDEN TERRACE
- NO CHAIN

Description

A traditional 1930's built semi detached house located in a residential road and offered to the market with no onward chain.

On the ground floor of the property you will find a living room which opens out into the dining room. The kitchen has a separate utility room to the rear. There is also a guest bedroom with an ensuite that also serves as a downstairs cloakroom. The conservatory sits to the rear of the property and opens out to a 60ft south facing garden.

The first floor comprises of 3 bedroom and a family bathroom as well as access to a partly boarded loft space.

Tenure	Freehold
EPC	D
Council Tax Band	D
	D

Situation

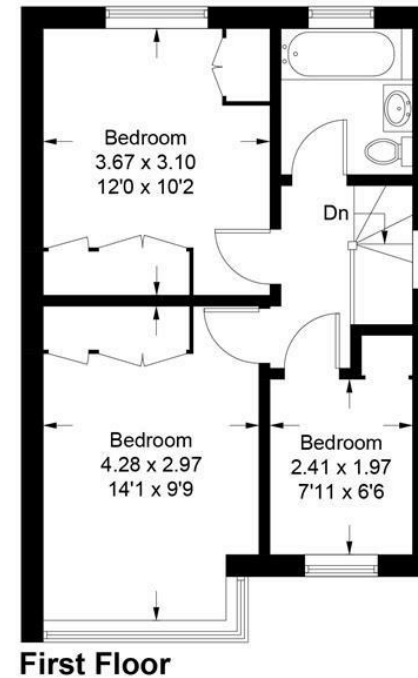
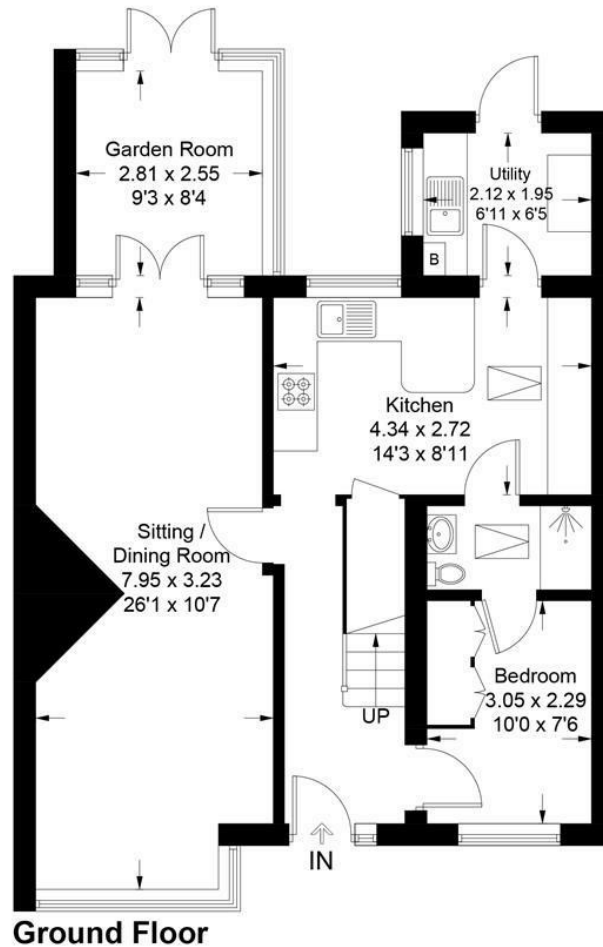
Leatherhead town offers a comprehensive range of shopping facilities including the partly covered Swan Shopping Centre with a variety of shops including Sainsburys, WH Smith, Boots, Waitrose local in Church Street, numerous restaurants and Leatherhead theatre and cinema.

Leatherhead main line railway station (about 10 minutes walk), offers fast and frequent services to London Waterloo, Victoria and London Bridge Junction 9 of the M25 can be found on the Ashted side of Leatherhead and Gatwick and Heathrow International Airports are within easy reach.

The area generally abounds in a wealth of glorious, open countryside with Box Hill, Denbies Vineyard and Norbury Park nearby and The National Trust owned Polesden Lacey in Bookham.



Approximate Gross Internal Area = 109.1 sq m / 1174 sq ft



This plan is for layout guidance only. Not drawn to scale unless stated. Windows and door openings are approximate. Whilst every care is taken in the preparation of this plan, please check all dimensions, shapes and compass bearings before making decisions reliant upon them. (ID1160294)
www.bagshawandhardy.com © 2025

1-3 Church Street, Leatherhead, Surrey, KT22 8DN
Tel: 01372 360078 **Email:** leatherhead@patrickgardner.com
www.patrickgardner.com

These particulars, whilst believed to be accurate are set out as a general outline only for guidance and do not constitute any part of an offer or contract. Intending purchasers should not rely on them as statements of representation of fact, but must satisfy themselves by inspection or otherwise as to their accuracy. No person in this firm's employment has the authority to make or give any representation or warranty in respect of the property.

