



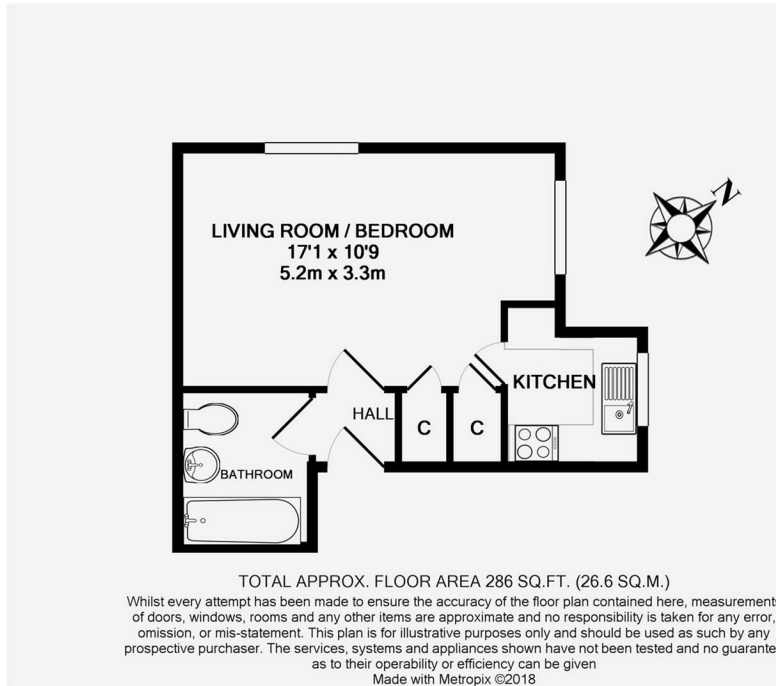
18 Elmer Mews, Fetcham, KT22 9DN

Price Guide £177,500

- GROUND FLOOR STUDIO
- SEPARATE KITCHEN
- PRIVATE PARKING SPACE
- WALKING DISTANCE TO TOWN AND STATION
- FULLY DOUBLE GLAZED
- 17' X 10'9" LIVING/BEDROOM
- BATHROOM
- CURRENT LET AT £700 pcm
- LONG LEASE + SHARE OF THE FREEHOLD
- END OF CHAIN

A ground floor purpose built studio apartment forming part of a favoured low rise apartment and house development in a recognised residential location

A purchase of this property offers the opportunity to acquire a ready-made investment as the property is currently let unfurnished on an Assured Shorthold Tenancy basis at £700 pcm.



<b>Tenure</b>	Leasehold + Share of Freehold
<b>Lease</b>	999 years from 2016
<b>Service Charge</b>	£1,200 pa
<b>Ground Rent</b>	£0
<b>EPC</b>	D
<b>Council Tax Band</b>	B

1-3 Church Street, Leatherhead, Surrey, KT22 8DN  
**Tel:** 01372 360078 **Email:** leatherhead@patrickgardner.com  
**www.patrickgardner.com**

These particulars, whilst believed to be accurate are set out as a general outline only for guidance and do not constitute any part of an offer or contract. Intending purchasers should not rely on them as statements of representation of fact, but must satisfy themselves by inspection or otherwise as to their accuracy. No person in this firms employment has the authority to make or give any representation or warranty in respect of the property.

