



9 Barnett Wood Lane, Leatherhead, KT22 7DR

Price Guide £349,950



- MID TERRACED HOUSE
- KITCHEN
- REAR LOBBY
- FIRST FLOOR BATHROOM
- TWO OFF ROAD PARKING SPACES
- OPEN PLAN LIVING ROOM
- CLOAKROOM/SHOWER ROOM
- TWO BEDROOMS
- BOARDED LOFT SPACE
- REAR GARDEN

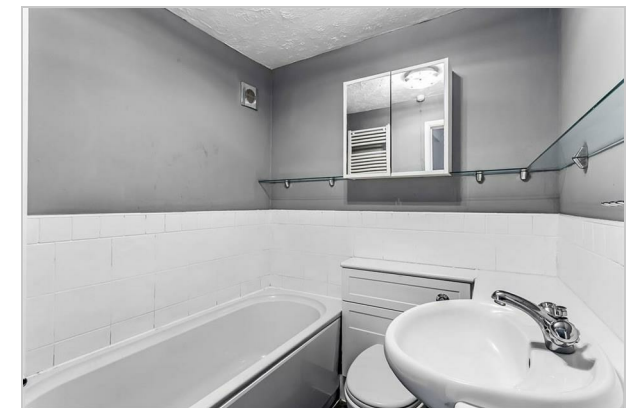
An attractive mid terraced timber framed cottage, believed to date from the Victorian era with character features including exposed timber beams and an open fireplace. Internally there is a downstairs shower room/cloakroom in addition to the first floor bathroom. Externally there is an enclosed rear garden and two off street parking spaces to the front. Gas fired heating and double glazing. Close to local schools and all amenities. No onward chain.

 = Reduced headroom below 1.5m / 5'0"

Approximate Gross Internal Area = 65.2 sq m / 702 sq ft  
 Loft Room = 10.4 sq m / 112 sq ft  
 Total = 75.6 sq m / 814 sq ft



This plan is for layout guidance only. Not drawn to scale unless stated. Windows and door openings are approximate. Whilst every care is taken in the preparation of this plan, please check all dimensions, shapes and compass bearings before making decisions reliant upon them. (ID1074135)  
 www.bagshawandhardy.com © 2024



Tenure Freehold  
 EPC D  
 Council Tax Band D

1-3 Church Street, Leatherhead, Surrey, KT22 8DN  
 Tel: 01372 360078 Email: leatherhead@patrickgardner.com  
 www.patrickgardner.com

These particulars, whilst believed to be accurate are set out as a general outline only for guidance and do not constitute any part of an offer or contract. Intending purchasers should not rely on them as statements of representation of fact, but must satisfy themselves by inspection or otherwise as to their accuracy. No person in this firms employment has the authority to make or give any representation or warranty in respect of the property.

