



6 Holly Court Belmont Road, Leatherhead, KT22 7DX

Price Guide £230,000



- GROUND FLOOR RETIREMENT APARTMENT
- LIVING/DINING ROOM
- DOUBLE BEDROOM
- RESIDENT PARKING
- COMMUNAL GARDENS
- DIRECT ACCESS TO SHARED PATIO
- FITTED KITCHEN
- BATHROOM
- RESIDENT MANAGER
- NO CHAIN

## Description

A well presented one bedroom ground floor apartment with direct access to a shared rear terrace overlooking the communal gardens.

Situated in this sought after development designed for the over 55's, there are superb communal facilities including residents lounge, lovely communal gardens, laundry room and overnight guest room.

The property features private access via French doors from the living/dining room onto a shared balcony/terrace, fitted kitchen, bathroom and good sized double bedroom with fitted wardrobes.

## Situation

Leatherhead town offers a comprehensive range of shopping facilities including the Swan Shopping Centre, theatre, library, Waitrose and Nuffield Health Fitness Gym. The public leisure centre is located on the edge of the town.

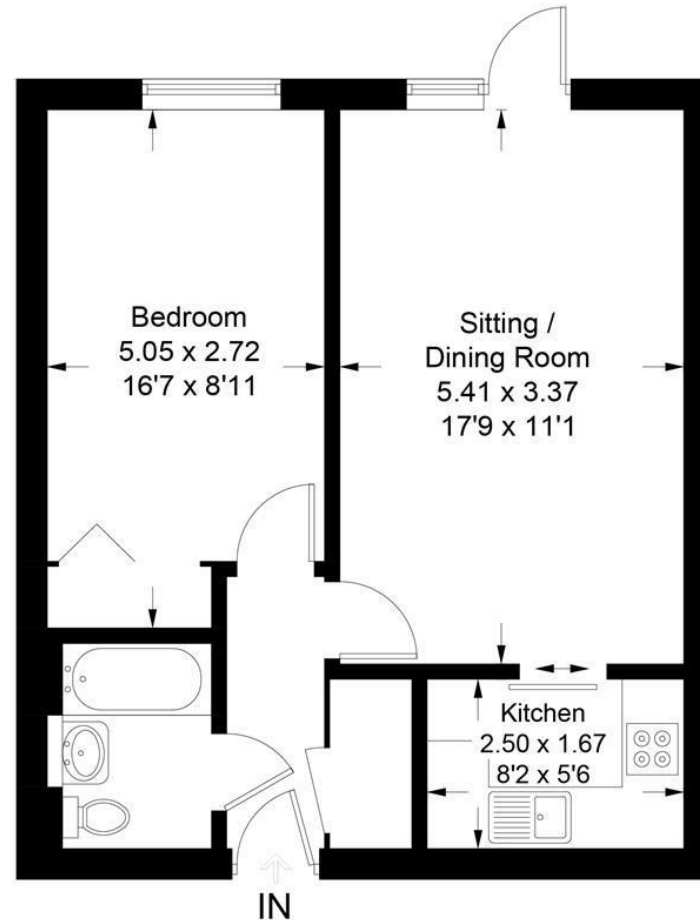
The main line railway station offers fast and frequent services north to London terminals and there are bus routes to Dorking and Guildford. Junction 9 of the M25 is only a two-minute drive away, providing easy access to both. Gatwick and Heathrow Airports.

There is a footpath/cycle path along the River Mole and into Dorking and in the near vicinity there are hundreds of acres of Green Belt countryside much of which is National Trust owned. On the doorstep are Polesden Lacey, Bocketts farm and Epsom Downs where the famous Derby is held.

<b>Tenure</b>	Leasehold
<b>EPC</b>	C
<b>Council Tax Band</b>	C
<b>Lease</b>	99 years from 01.06.87 (63 years remaining)
<b>Service Charge</b>	£3,800.04 pa. (£316.67 paid monthly)
<b>Ground Rent</b>	£150 pa. until 2037 £225 pa. (2037 - 2062) £300 pa. for remainder of term



Approximate Gross Internal Area = 44.9 sq m / 483 sq ft



This plan is for layout guidance only. Not drawn to scale unless stated. Windows and door openings are approximate. Whilst every care is taken in the preparation of this plan, please check all dimensions, shapes and compass bearings before making decisions reliant upon them. (ID1046636)

[www.bagshawandhardy.com](http://www.bagshawandhardy.com) © 2024

1-3 Church Street, Leatherhead, Surrey, KT22 8DN  
**Tel:** 01372 360078 **Email:** [leatherhead@patrickgardner.com](mailto:leatherhead@patrickgardner.com)  
[www.patrickgardner.com](http://www.patrickgardner.com)

These particulars, whilst believed to be accurate are set out as a general outline only for guidance and do not constitute any part of an offer or contract. Intending purchasers should not rely on them as statements of representation of fact, but must satisfy themselves by inspection or otherwise as to their accuracy. No person in this firm's employment has the authority to make or give any representation or warranty in respect of the property.

