



Bolton Road, Harrow

£550,000 Freehold

Located in a highly desirable and sought-after residential area, this charming three-bedroom family home is available for sale with no upper chain. The property is conveniently situated close to shopping amenities and excellent transport links into London. It features a gas central heating system and double-glazed windows, with potential for improvement and extension, subject to the usual consents.

EPC Rating: D
Council Tax Band: D

- Chain Free • End Of Terrace Home • Three Bedrooms • Separate Reception Room • Open-Plan Kitchen Dining Room • Family Bathroom • Additional Ground Floor W/C • Double Glazed Windows • Gas Central Heating System • Transport Links Nearby



rawlinson gold **rg**
ESTATE AGENTS
Est. 1994

Bolton Road, Harrow

£550,000 Freehold

FURTHER DETAILS

The ground floor of the property comprises of an entrance hall, front reception room, an open-plan kitchen/diner to the rear and a ground floor guest cloakroom, whilst to the first floor there are three bedrooms and family bathroom. To the rear there is a good size garden that is mainly laid to lawn.

LOCATION

Bolton Road is located within one mile of Harrow's town centre and also within walking distance of both Headstone Manor Park and Harrow Recreation Park and three quarters of a mile from Wealdstone's High Street. This means that within walking distance are Metropolitan, Bakerloo, London Overground and National Rail train services, with London Euston reachable in under 30 minutes. Also within walking distance are several schools rated by Ofsted as outstanding, including Nower Hill High School and Marlborough Primary School.

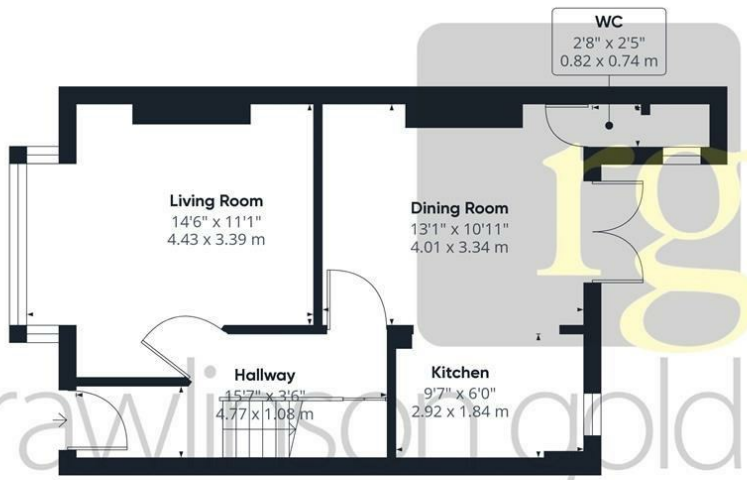
FREE MARKET APPRAISAL

Please contact our Harrow Office if we can be of assistance with the sale or rental of your current property.

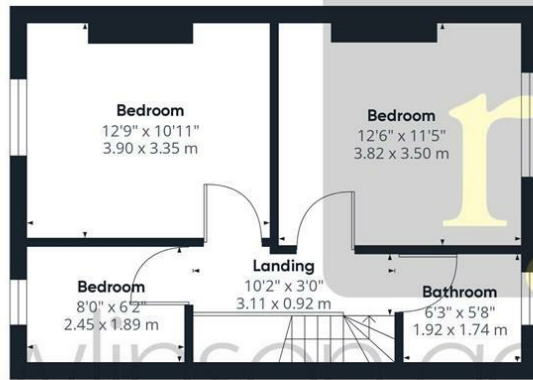
CONTACT RAWLINSON GOLD

If you would like to arrange a viewing or discuss any aspect of this property, please contact our Harrow Office by telephone on 020 8861 2020 or by email at harrow@rawlinsongold.co.uk





Ground Floor



Floor 1

Approximate total area[®]
 860.74 ft²
 79.97 m²

(1) Excluding balconies and terraces

While every attempt has been made to ensure accuracy, all measurements are approximate, not to scale. This floor plan is for illustrative purposes only.

GIRAFFE360