



Crofts Road, Harrow

£525,000 Freehold

A rare opportunity to buy a three bedroom family home with a large double garage. Located a short walk from Harrow's town centre, this home is very well presented and features a modern kitchen and bathroom suite. In addition it also benefits from double glazed windows, a gas central heating system and is to be sold with no upper chain.

**EPC Rating: D
Council Tax Band: D**

- Three Bedroom Home • Two Reception Rooms • Double Garage • No Upper Chain • Good Condition • Gas Central Heating • Double Glazed Windows • Town Centre Location



Crofts Road, Harrow

£525,000 Freehold

FURTHER DETAILS

The accommodation comprises of an entrance hall, lounge, dining room and kitchen on the ground floor. Upstairs, off the landing, are three bedrooms and a family bathroom. Outside there is a garden and paved area to the front with potential for off street parking, subject to the usual consents, whilst to the rear is a small paved garden and a large double garage with access from Grange Road.

LOCATION

Crofts Road is located in the heart of Harrow's town centre running between Bonnersfield Lane and Francis Road. This location is ideal for the excellent transport links at Harrow on the Hill (Metropolitan and Chiltern Line) and Kenton (Bakerloo and London Overground) and is within walking distance of Harrow High, Elmgrove Primary School and the comprehensive shopping facilities within the town centre.

FREE MARKET APPRAISAL

Please contact our Harrow Office if we can be of assistance with the sale or rental of your current property.

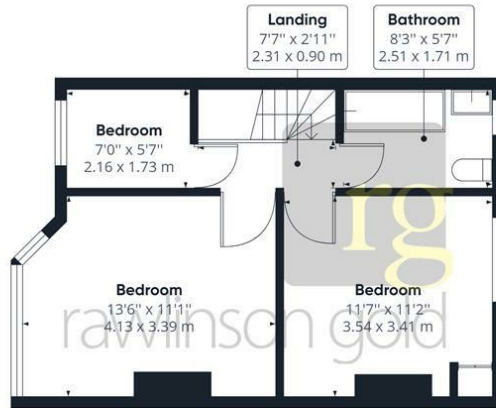
CONTACT RAWLINSON GOLD

If you would like to arrange a viewing or discuss any aspect of this property, please contact our Harrow Office on 020 8861 2020 or by email at harrow@rawlinsongold.co.uk





Ground Floor



Floor 1

Approximate total area⁽¹⁾

804.64 ft²
74.75 m²

(1) Excluding balconies and terraces

While every attempt has been made to ensure accuracy, all measurements are approximate, not to scale. This floor plan is for illustrative purposes only.

GIRAFFE360