



Hazel Road, Erith, Kent **Guide £325,000**









Hazel Road, Erith, Kent

**Guide £325,000**

### Property Description

Your Move are excited to present this two double bedroom property. Situated just 0.21 Miles from Slade Green station and a even shorted distance to a bus stop this property ensures your are always able to commute. The property is comprised of a lounge featuring a storage area, a good sized, A long and spacious kitchen, large garden, Two double bedrooms and a family bathroom upstairs.

### Our View

This two bedroom property is a phenomenal buy for anyone who is looking for a investment property, someone looking to get their foot on the property ladder. The property holds huge potential and is in a prime location, a stunning river view, what are you waiting for give us a call today!

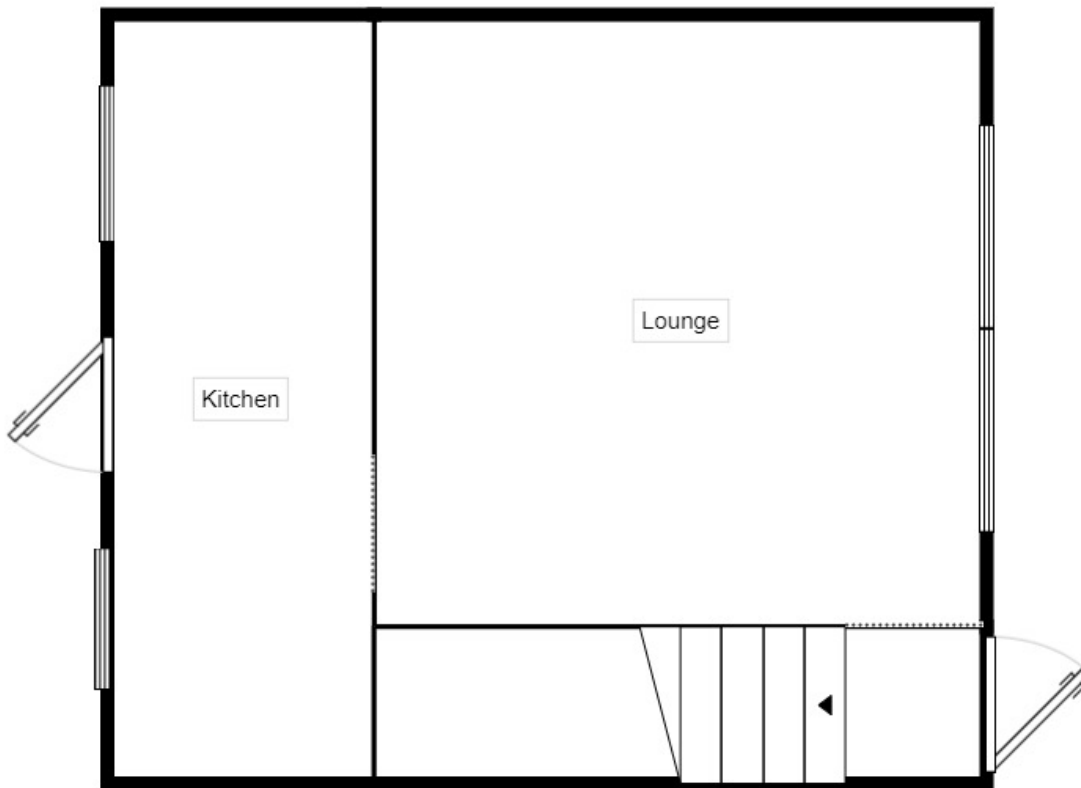
### Location

The property is situated just a short walk from the local shops, bus stops and train station. Located near the heart of the up and coming Erith town center, you are never without entertainment or access to public transport. Bus from the town center cover a wide array of areas whether you need to get to Bluewater, Bexleyheath or outer London there will be a bus route for you. As

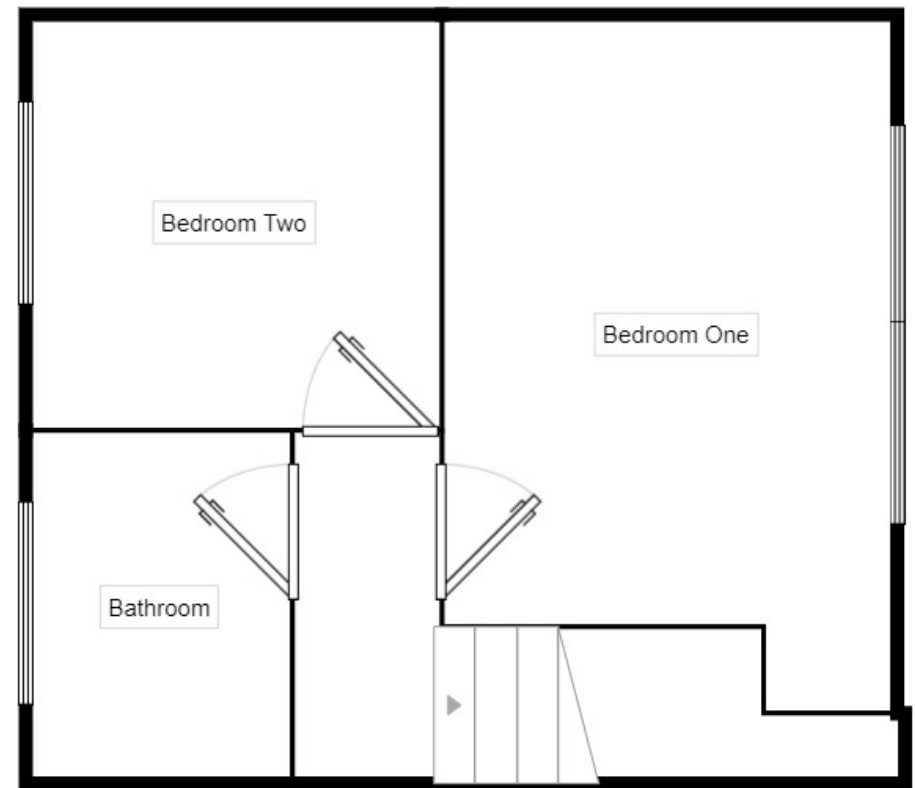


**EPC Awaited**  
**For full EPC please contact the branch**

Ground Floor



First Floor



Measurements are approximate. Not to scale. For illustrative purposes only.

IMPORTANT NOTE TO PURCHASERS: We endeavour to make our sales particulars accurate and reliable, however, they do not constitute or form part of an offer or any contract and none is to be relied upon as statements of representation or fact. The services, systems and appliances listed in this specification have not been tested by us and no guarantee as to their operating ability or efficiency is given. All measurements have been taken as guide to prospective buyers only, and are not precise. Floor plans where included are not to scale and accuracy is not guaranteed. If you require clarification or further information on any points, please contact us, especially if you are travelling some distance to view. Fixtures and fittings other than those mentioned are to be agreed with the seller.

The Your Move branch is operated by National Home Move Limited which is independently owned and operated under a licence from your-move.co.uk Limited. National Home Move Limited is registered in England and Wales with company number 11805074, registered office: 5 Brooklands Place, Brookland Road, Sale, United Kingdom, M33 3SD. VAT Reg No: 315255523.

\*Calls may be recorded and/or monitored for training and/or security purposes.

Your Move, 327 Bexley Road, Northumberland  
Heath, Erith, Kent, DA8 3EX

01322 336 633 \* Northumberlandheath@your-  
move.co.uk

