



Langafel Close, Longfield, Kent **Offers Over £475,000**







Langafel Close, Longfield, Kent

Offers Over £475,000



EPC Grade E
For full EPC please contact the branch

Property Description

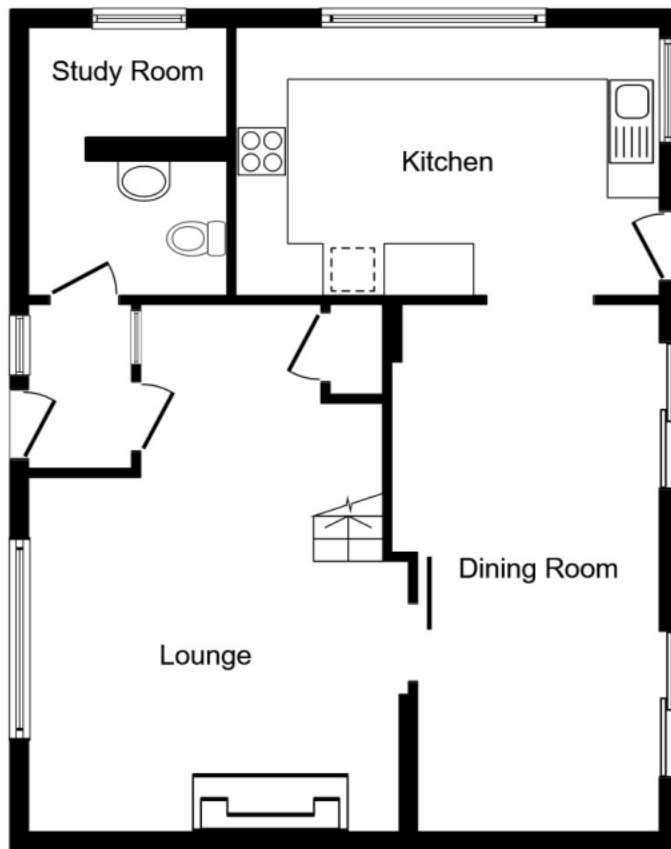
Location location location! This impressive four bedroom semi detached house occupying a corner plot is located within the heart of the village of Longfield, tucked away in a cul-de-sac. The home offers a larger than average rear garden plus garage to side, workshop and man cave (styled as a pub!). Downstairs internally the home features a roomy rear facing dining room and equally spacious kitchen, resulting in a fantastic entertaining area. Also downstairs is a useful utility room with WC. Upstairs the home boasts a master bedroom with en suite bathroom plus three further well proportioned bedrooms and family bathroom. The side/rear grounds include a detached garage, workshop and shed. The garden is well tended and includes a large patio area. This home ticks all the boxes for the family market, in our opinion. What the owner says. Living in Longfield has been a pleasure since 1986. It is a lovely quiet close with a mixture of 6 well

Our View

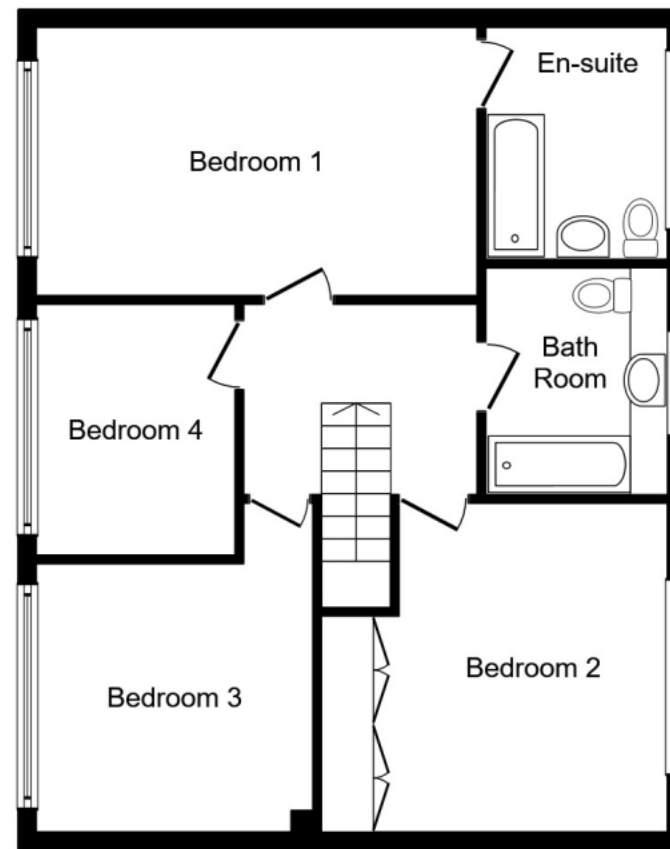
What's not to like? The central location makes it extremely convenient for everything Longfield has to offer, whilst tucked away in the corner of a cul-de-sac. Good proportions, especially the entertaining areas - dining room, kitchen and garden. Sensible layout and well presented. Miss it at your peril!

Location

Langafel Close is a cul-de-sac located within the heart of Longfield, with all the local amenities of Longfield High Street in close proximity (includes Waitrose, Co-Op, Post Office, Doctors, Vets and Longfield Station with its London bound service). Local residents enjoy the easy access to Bluewater and also the A2.



Ground Floor



First Floor

Total floor area 136.0 sq. m. (1,464 sq. ft.) approx

This plan is for illustration purposes only and may not be representative of the property. Plan not to scale.

Powered by audioagent.com

IMPORTANT NOTE TO PURCHASERS: We endeavour to make our sales particulars accurate and reliable, however, they do not constitute or form part of an offer or any contract and none is to be relied upon as statements of representation or fact. The services, systems and appliances listed in this specification have not been tested by us and no guarantee as to their operating ability or efficiency is given. All measurements have been taken as guide to prospective buyers only, and are not precise. Floor plans where included are not to scale and accuracy is not guaranteed. If you require clarification or further information on any points, please contact us, especially if you are travelling some distance to view. Fixtures and fittings other than those mentioned are to be agreed with the seller.

Your Move is a trading name of your-move.co.uk, registered in England at Newcastle House, Albany Court, Newcastle Business Park, Newcastle upon Tyne NE4 7YB (number 01864469).

*Calls may be recorded and/or monitored for training and/or security purposes.

53-55 Station Road, Longfield, Kent, DA3 7QA

01474 704104 * Longfield@your-move.co.uk

