



Courtlands Avenue, London

Guide £225,000

Property Description

Guide Price £225,000 to £250,000 Cash buyers only - Your Move are very pleased to present his investment opportunity in the form of this two bedroom maisonette. The property has a resident tenant in situ until 2019 and the property is offered with a 41 year lease. We strongly recommend that the details of the resident tenant must be checked by your legal advisor. EPC grade C.

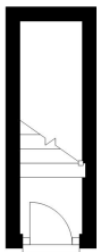
Our View

Cash buyers only - Your Move are very pleased to present his investment opportunity in the form of this two bedroom maisonette.

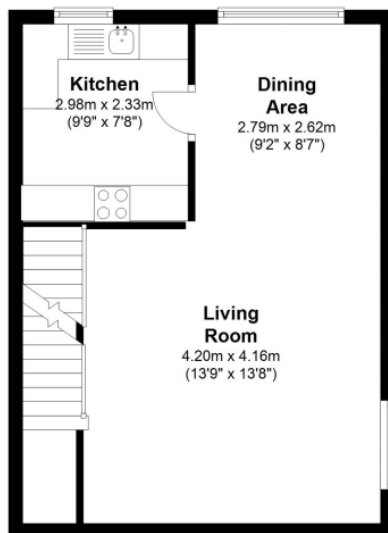
Location

Close to local transport links and shopping facilities.

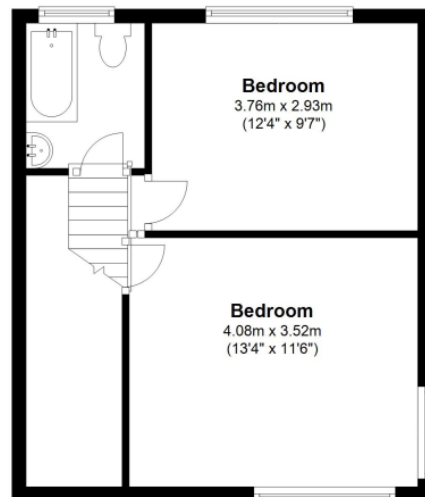
Ground Floor
Approx. 2.6 sq. metres (28.5 sq. feet)



First Floor
Approx. 35.6 sq. metres (383.4 sq. feet)



Second Floor
Approx. 36.2 sq. metres (389.6 sq. feet)



Total area: approx. 74.5 sq. metres (801.5 sq. feet)



Two Bedrooms
For full EPC please contact the branch

IMPORTANT NOTE TO PURCHASERS: We endeavour to make our sales particulars accurate and reliable, however, they do not constitute or form part of an offer or any contract and none is to be relied upon as statements of representation or fact. The services, systems and appliances listed in this specification have not been tested by us and no guarantee as to their operating ability or efficiency is given. All measurements have been taken as guide to prospective buyers only, and are not precise. Floor plans where included are not to scale and accuracy is not guaranteed. If you require clarification or further information on any points, please contact us, especially if you are travelling some distance to view. Fixtures and fittings other than those mentioned are to be agreed with the seller.

Your Move is a trading name of your-move.co.uk, registered in England at Newcastle House, Albany Court, Newcastle Business Park, Newcastle upon Tyne NE4 7YB (number 01864469).

*Calls may be recorded and/or monitored for training and/or security purposes.

186 Westcombe Hill, London, SE3 7DH
020 8853 2222 * blackheath@your-move.co.uk

