



Jasmine Road, Rectory Farm, Northampton  
£195,000

 **YOUR MOVE**  
Hobin Roberts





IMPORTANT NOTE TO PURCHASERS: We endeavour to make our sales particulars accurate and reliable, however, they do not constitute or form part of an offer or any contract and none is to be relied upon as statements of representation or fact. The services, systems and appliances listed in this specification have not been tested by us and no guarantee as to their operating ability or efficiency is given. All measurements have been taken as guide to prospective buyers only, and are not precise. Floor plans where included are not to scale and accuracy is not guaranteed. If you require clarification or further information on any points, please contact us, especially if you are travelling some distance to view. Fixtures and fittings other than those mentioned are to be agreed with the seller.





## Description

Offered to the market with no onward chain is three bedroom, mid terrace family home, situated in the popular location of Rectory Farm. The property benefits from UPVC double glazing and gas radiator central heating. As you enter the property via the entrance hall there is access to a cloakroom and a door leading you a spacious living room. Accessed off the entrance hall is the kitchen/dining room with a range of eye-level and base-level units, space for a free standing range cooker, plumbing for a washing machine and space for white goods. Off the dining area there is access to an enclosed, cottage style rear garden. Off the first floor landing you will find two double bedrooms with one including fitted wardrobes and a family bathroom with a three-piece suite. Outside, there are front and rear gardens with communal parking bays. Jasmine Road is situated in the popular residential location of Rectory Farm, approximately five miles to the east of the Northampton Town Centre. Rectory Farm is well served with local amenities, schools and shops. Weston Favell Centre is about 1-2 miles away and comprises of many retail outlets including supermarkets, clothing shops, banks, a pharmacy and a post office. There's a bus stop on Rectory Farm Road and a Co-Op within walking distance. A pocket park is nearby and is very popular with dog walkers.

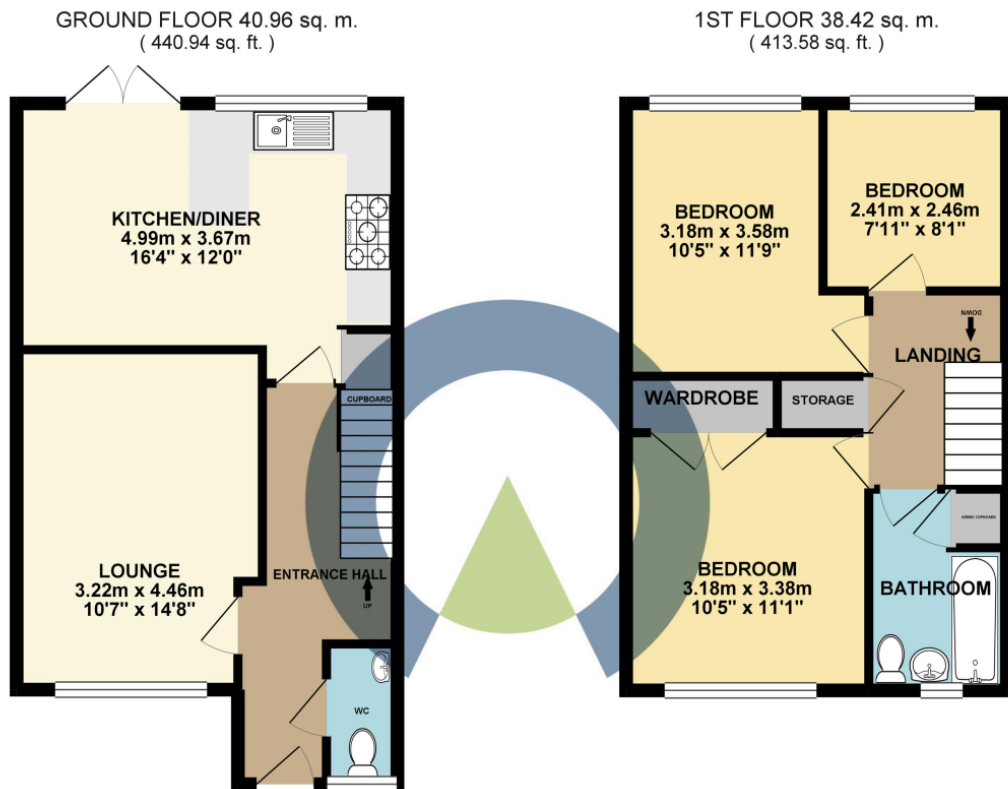
## Council Tax

Band B

## EPC

EPC Rating B

For full EPC please contact the branch.



TOTAL FLOOR AREA : 79.39 sq. m. ( 854.52 sq. ft. ) approx.

Whilst every attempt has been made to ensure the accuracy of the floorplan contained here, measurements of doors, windows, rooms and any other items are approximate and no responsibility is taken for any error, omission or mis-statement. This plan is for illustrative purposes only and should be used as such by any prospective purchaser. The services, systems and appliances shown have not been tested and no guarantee as to their operability or efficiency can be given.  
Made with Metropix ©2019

Bridge Street, Northampton, NN1 1NH

01604 633272 \* [Northampton@your-move.co.uk](mailto:Northampton@your-move.co.uk)



**YOUR MOVE**

Hobin Roberts

[your-move.co.uk](http://your-move.co.uk)