



Barrows Lane, Yardley, Birmingham  
Offers Invited - Based On £280,000



**YOUR MOVE**

Murray Rogers

## Description

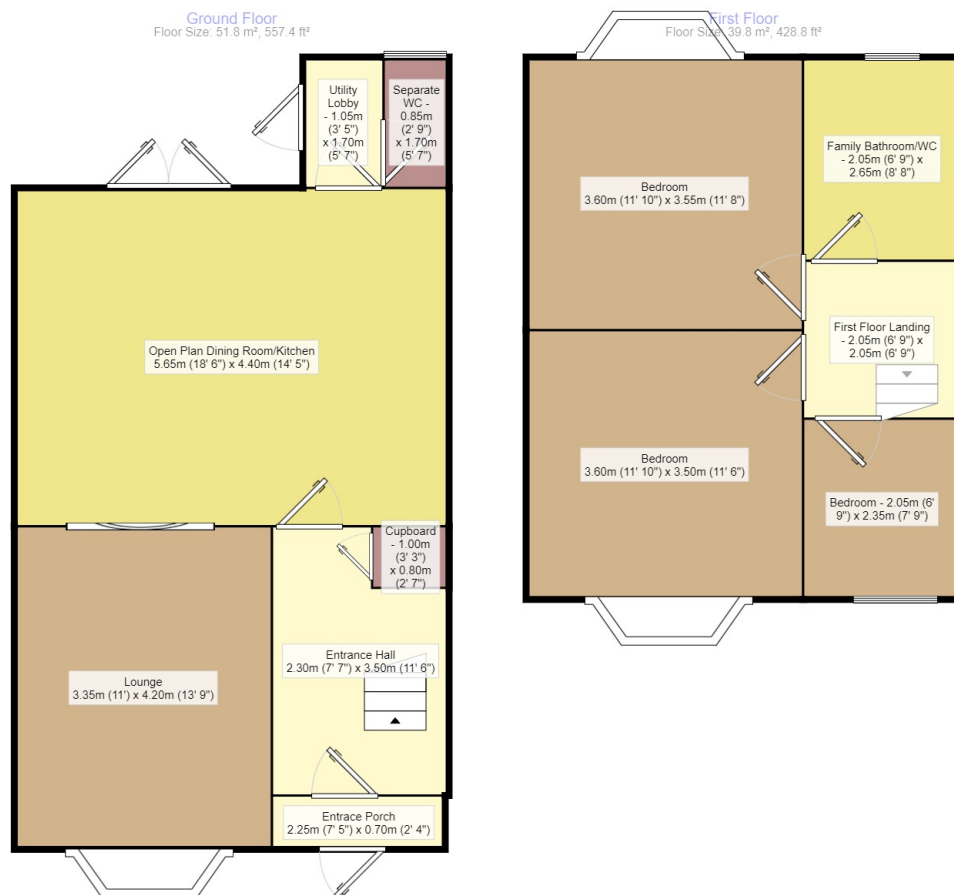
This stunning traditional extended three bedroom semi has been lovingly attended and modernised by the current owner. The accommodation comprises: Entrance porch, entrance hall, Modern open plan kitchen dining room, with central island integrated appliances, feature fireplace with log burning stove, lounge, utility lobby, ground floor WC, three bedrooms and a sumptuous bathroom with free standing bath and shower cubical. It also benefits from central heating and double glazing. Outside there is a fore garden, shared drive and to the rear a well maintained and landscaped rear garden with a brick built summer house. This is a must view house. EPC band E

## Council Tax

## EPC

Traditional Semi Detached

For full EPC please contact the branch.



Measurements are approximate. Not to scale. For illustrative purposes only.

165 Station Road, Stechford, Birmingham, B33 8BA

0121 784 8444 \* [Stechford@your-move.co.uk](mailto:Stechford@your-move.co.uk)



**YOUR MOVE**

Murray Rogers

[your-move.co.uk](http://your-move.co.uk)

**IMPORTANT NOTE TO PURCHASERS:** We endeavour to make our sales particulars accurate and reliable, however, they do not constitute or form part of an offer or any contract and none is to be relied upon as statements of representation or fact. The services, systems and appliances listed in this specification have not been tested by us and no guarantee as to their operating ability or efficiency is given. All measurements have been taken as guide to prospective buyers only, and are not precise. Floor plans where included are not to scale and accuracy is not guaranteed. If you require clarification or further information on any points, please contact us, especially if you are travelling