



Piper Drive, Long Whatton, Loughborough, Leicestershire

£360,000









# Piper Drive, Long Whatton, Loughborough, Leicestershire

**£360,000**



**EPC To Follow**  
**For full EPC please contact the branch**

## Property Description

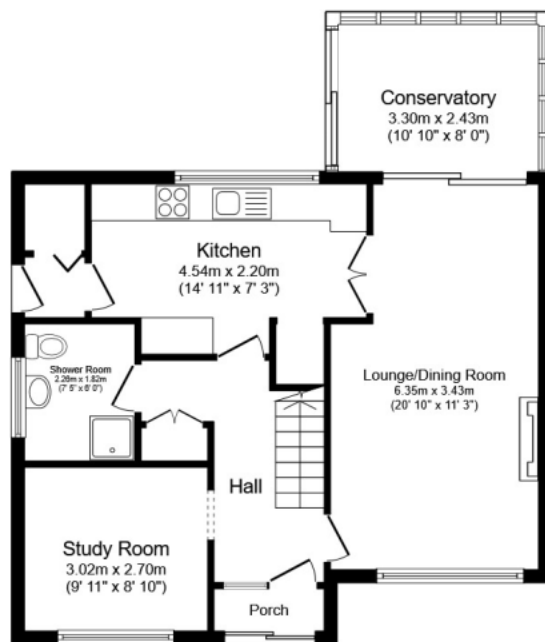
Rare to the market is this well presented detached property with flexible spacious accommodation. The downstairs accommodation has a two reception rooms. The lounge enjoys dual views of the garden and a feature oak surround fireplace with coal effect fire. The kitchen can be accessed from the hallway and lounge, and is well designed with a range of wall and base units, space for dishwasher and fitted hob with extractor over and fitted oven. There is a double glazed window overlooking the garden and door to rear lobby with cupboard housing washing machine and gas boiler. There is a downstairs shower room with vanity sink and low level wc. To the first floor are two double bedrooms. The master has fitted wardrobes and walking in closet with power and light. The second bedroom has fitted wardrobes and access to the fully boarded loft with ladder power and light. The modern bathroom has a free standing bath, sink unit, low level wc and

## Our View

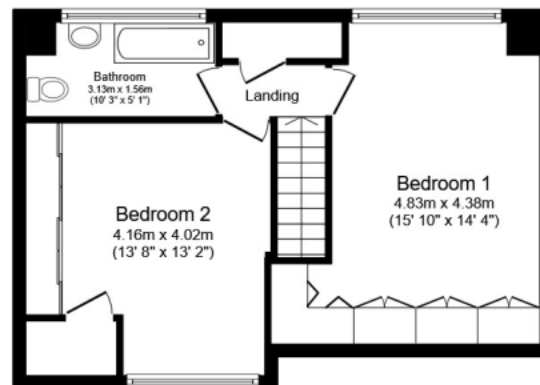
A well presented detached property with lots of potential and flexible accommodation

## Location

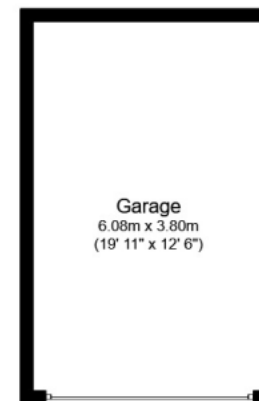
The property is situated in the highly sought after village of Long Whatton providing easy access to the M1, village centre and other local amenities, this property would make the perfect home.



**Ground Floor**



**First Floor**



**Garage**

**Total floor area 137.5 sq.m. (1,480 sq.ft.) approx**

This floor plan is for illustrative purposes only. It is not drawn to scale. Any measurements, floor areas (including any total floor area), openings and orientation are approximate. No details are guaranteed, they cannot be relied upon for any purpose and they do not form part of any agreement. No liability is taken for any error, omission or misstatement. A party must rely upon its own inspection(s).

Plan produced for Your Move. Powered by [www.focalagent.com](http://www.focalagent.com)

IMPORTANT NOTE TO PURCHASERS: We endeavour to make our sales particulars accurate and reliable, however, they do not constitute or form part of an offer or any contract and none is to be relied upon as statements of representation or fact. The services, systems and appliances listed in this specification have not been tested by us and no guarantee as to their operating ability or efficiency is given. All measurements have been taken as guide to prospective buyers only, and are not precise. Floor plans where included are not to scale and accuracy is not guaranteed. If you require clarification or further information on any points, please contact us, especially if you are travelling some distance to view. Fixtures and fittings other than those mentioned are to be agreed with the seller.

The Your Move branch is operated by National Home Move Limited which is independently owned and operated under a licence from [your-move.co.uk](http://your-move.co.uk) Limited. National Home Move Limited is registered in England and Wales with company number 11805074, registered office: 5 Brooklands Place, Brookland Road, Sale, United Kingdom, M33 3SD. VAT Reg No: 315255523.

\*Calls may be recorded and/or monitored for training and/or security purposes.

65/66, Baxter Gate, Loughborough, Leicestershire,  
LE11 1TH

01509 231731 \* [loughborough@your-move.co.uk](mailto:loughborough@your-move.co.uk)

