



Northhill Close, Sileby, Loughborough, Leicestershire **£180,000**





YOUR MOVE





Northhill Close, Sileby,
Loughborough,
Leicestershire

£180,000



EPC To Follow
For full EPC please contact the branch

Property Description

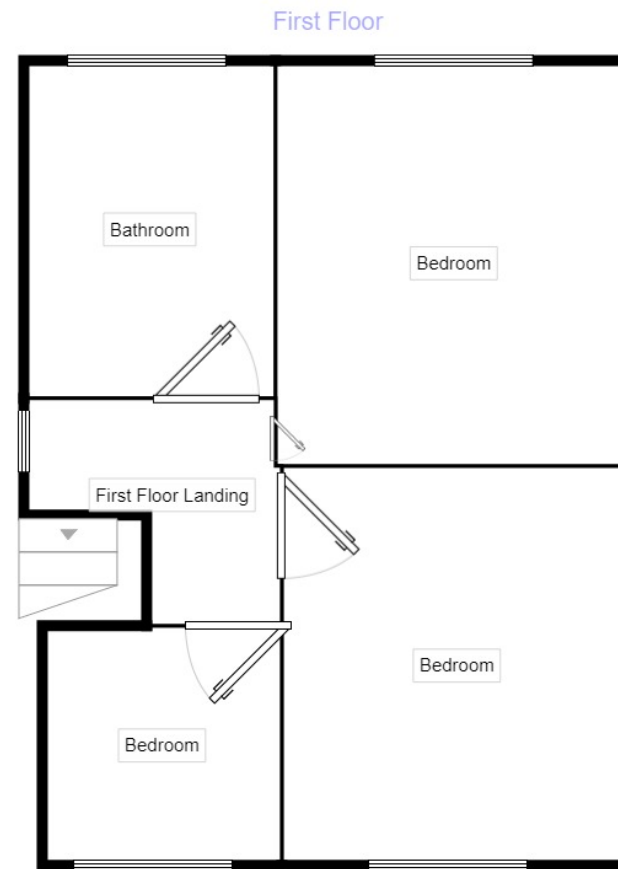
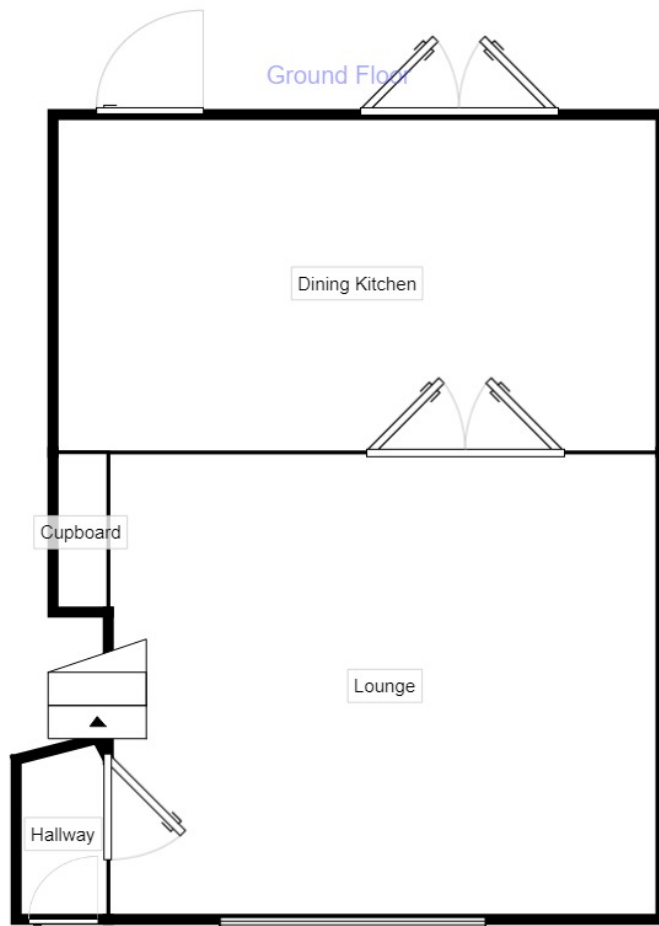
A delightful semi detached property with great spacious accommodation in the popular village location of Sileby. The property has a lounge to the front with laminated flooring, feature fireplace and double doors into the kitchen. The kitchen spans along the back of the property with French Doors overlooking to the garden. There is space for a dining table and useful downstairs storage. To the first floor are three bedrooms. The bathroom has a corner bath with shower above, pedestal wash hand basin and low level wc. There is a front garden area and access to the rear. The rear has a paved seating area and laid to lawn with enclosed fencing. Viewing Recommended

Our View

A three bedroom property with front and rear gardens

Location

Sileby is a popular village location ideally placed for access to the university town of Loughborough which offers a range of amenities to include renowned schooling, the university and colleges as well as a wide range of shopping and recreational pursuits. Sileby is also well placed for the city of Leicester which is a major centre of employment. The village itself offers a good range of amenities to include shopping for day to day needs as well as various public houses and places of worship.



Measurements are approximate. Not to scale. For illustrative purposes only.

IMPORTANT NOTE TO PURCHASERS: We endeavour to make our sales particulars accurate and reliable, however, they do not constitute or form part of an offer or any contract and none is to be relied upon as statements of representation or fact. The services, systems and appliances listed in this specification have not been tested by us and no guarantee as to their operating ability or efficiency is given. All measurements have been taken as guide to prospective buyers only, and are not precise. Floor plans where included are not to scale and accuracy is not guaranteed. If you require clarification or further information on any points, please contact us, especially if you are travelling some distance to view. Fixtures and fittings other than those mentioned are to be agreed with the seller.

The Your Move branch is operated by National Home Move Limited which is independently owned and operated under a licence from your-move.co.uk Limited. National Home Move Limited is registered in England and Wales with company number 11805074, registered office: 5 Brooklands Place, Brookland Road, Sale, United Kingdom, M33 3SD. VAT Reg No: 315255523.

*Calls may be recorded and/or monitored for training and/or security purposes.

65/66, Baxter Gate, Loughborough, Leicestershire,
LE11 1TH

01509 231731 * loughborough@your-move.co.uk



YOUR MOVE