



Braddon Road, Loughborough, Leicestershire **£300,000**







Braddon Road,
Loughborough,
Leicestershire

£300,000



EPC To Follow
For full EPC please contact the branch

Property Description

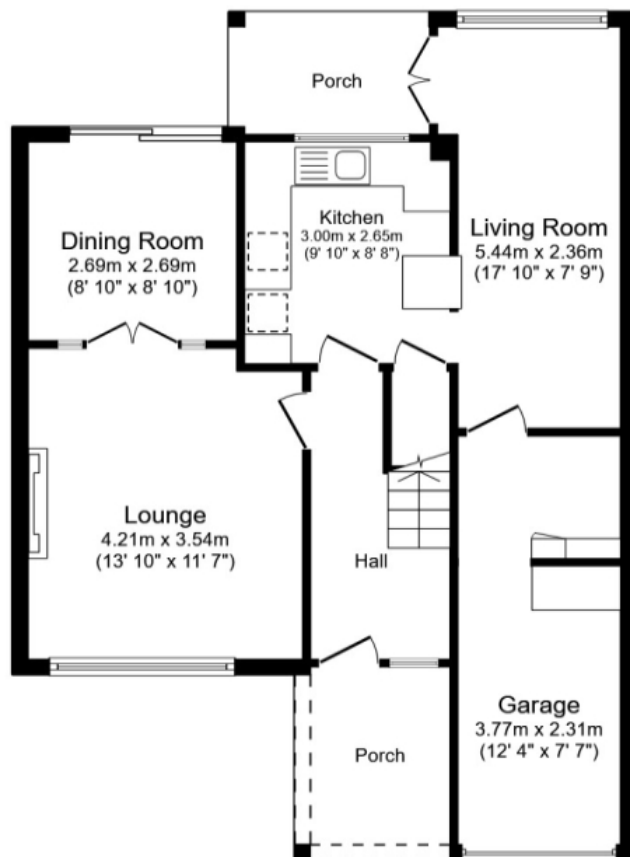
A well presented family home having been extended to provide well presented and spacious accommodation. The accommodation comprises from the entrance hall, leads into the lounge with doors into the dining area with patio doors leading onto the garden. The fitted kitchen has a range of wall and base units with worksurfaces, space for oven, sink units integral appliances and tiled flooring continue throughout the room. The open plan area has space for a dining table, seating area and access to the garden. There is access to the garage area with storage space and door to understairs storage. To the first floor are four bedrooms. The master is fitted with a comprehensive range of fitted furniture. The family bathroom comprising a four piece suite with separate shower cubicle. There is double blocked driveway to the front. The rear has an area laid to lawn and well stocked borders, seating area with pergola.

Our View

A lovely extended semi detached on a good sized plot with spacious and well presented living accommodation. The property has a delightful rear garden and viewing is recommended.

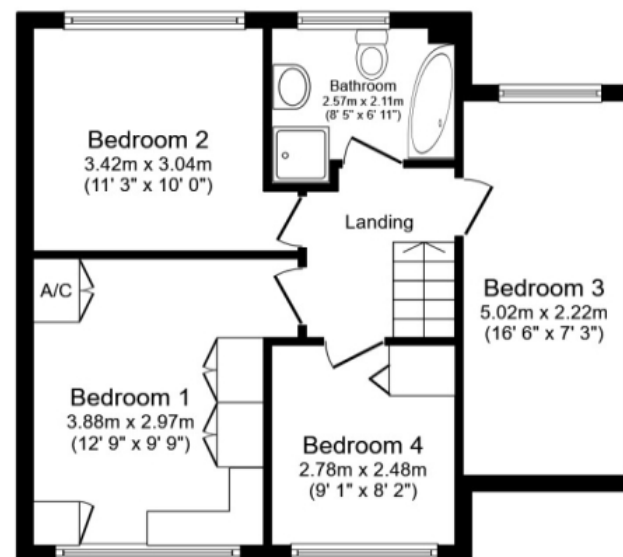
Location

Loughborough is a vibrant town centre with a range of shops and amenities, retail outlet and local independent stores. The property is positioned with access to Tescos, Morrisons and surrounding shops. University of Loughborough and college is all within access as well as a train station. The property is located within access to primary and secondary schools.



Ground Floor

Total floor area 164.2 sq.m. (1,768 sq.ft.) approx



First Floor

This floor plan is for illustrative purposes only. It is not drawn to scale. Any measurements, floor areas (including any total floor area), openings and orientation are approximate. No details are guaranteed, they cannot be relied upon for any purpose and they do not form part of any agreement. No liability is taken for any error, omission or misstatement. A party must rely upon its own inspection(s).
Plan produced for Your Move. Powered by www.focalagent.com

IMPORTANT NOTE TO PURCHASERS: We endeavour to make our sales particulars accurate and reliable, however, they do not constitute or form part of an offer or any contract and none is to be relied upon as statements of representation or fact. The services, systems and appliances listed in this specification have not been tested by us and no guarantee as to their operating ability or efficiency is given. All measurements have been taken as guide to prospective buyers only, and are not precise. Floor plans where included are not to scale and accuracy is not guaranteed. If you require clarification or further information on any points, please contact us, especially if you are travelling some distance to view. Fixtures and fittings other than those mentioned are to be agreed with the seller.

The Your Move branch is operated by National Home Move Limited which is independently owned and operated under a licence from your-move.co.uk Limited. National Home Move Limited is registered in England and Wales with company number 11805074, registered office: 5 Brooklands Place, Brookland Road, Sale, United Kingdom, M33 3SD. VAT Reg No: 315255523.

*Calls may be recorded and/or monitored for training and/or security purposes.

65/66, Baxter Gate, Loughborough, Leicestershire,
LE11 1TH

01509 231731 * loughborough@your-move.co.uk

