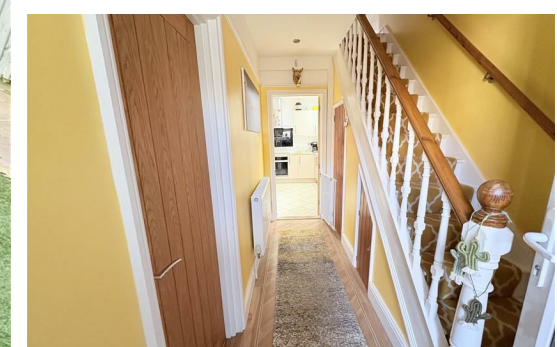




Whilst every attempt has been made to ensure the accuracy of the floorplan contained here, measurements of doors, windows, rooms and any other items are approximate and no responsibility is taken for any error, omission or mis-statement. This plan is for illustrative purposes only and should be used as such by any prospective purchaser. The services, systems and appliances shown have not been tested and no guarantee as to their operability or efficiency can be given.
Made with Metropix ©2025



Contact

25 Stubbington Green
Fareham
Hampshire
PO14 2JY

E: hello@chambersagency.co.uk

T: 01329665700

<https://www.chambersestateagency.com/>



21
Carnarvon Road
Gosport
PO12 3QP



01329665700

Stubbington

21 Carnarvon Road

Gosport PO12 3QP

£329,950
Freehold



This immaculate extended three bedroom semi detached property has been owned by the current seller for over twenty years. The accommodation comprises of a porch, entrance hallway, lounge to front, 17ft kitchen to rear, family room and a downstairs shower room/utility. The first floor offers three well proportioned bedrooms and a refitted bathroom. There is also an occasional loft room with a Velux widow. Outside the property has many benefits firstly a South facing private rear garden which in turn leads to a gym/storage and two garages situated side by side and accessed at the rear of the property. This family home is very well presented throughout and has excellent access to bus and road links, whilst being close to local shops and schools It is also in the popular Bay House catchment area. Please call Chambers Sales and Lettings to avoid missing out!

Porch
Constructed of UPVC double glazed elevations, storage cupboard, Karndean flooring, door into

Entrance Hallway
Staircase to first floor landing, Karndean flooring, radiator, cupboard housing combi boiler (approximately 3 years old), doors to kitchen/diner and to:

Lounge
13'10" x 11'3" (4.24 x 3.43)
Double glazed bay window to front elevation, Karndean flooring, picture rail, radiator.

Kitchen/Diner
17'6" x 10'11" (5.34 x 3.33)
Two double glazed windows to side elevation, fitted with a comprehensive range of wall and base cupboard/drawer units with Quartz work surfaces over, integrated appliances including a five ring induction hob, with chimney hood above and electric oven under, integrated larder fridge and fridge/freezer, inset one and half bowl porcelain sink unit with mixer tap, plumbing for dishwasher, space for dining table and chairs, Karndean flooring, inset spotlights to ceiling, sliding patio doors to:

Family Room
9'7" x 9'4" (2.94 x 2.86)
Two Velux windows, UPVC French doors and window overlooking the rear garden, ceramic tiled floor, radiator, inset spotlights to ceiling, door to:

Shower Room
Double glazed window to rear elevation, shower cubicle with fitted electric shower, inset vanity sink unit surrounded by storage units, illuminated mirror, WC, double doors to utility cupboard housing washing machine and tumble dryer, Velux window, two radiators

First Floor Landing
Doors to all rooms access to occasional loft room.

Master Bedroom
11'2"x 9'2" plus wardrobes (3.41x 2.81 plus wardrobes)
Double glazed window to front elevation, built in high gloss wardrobes offering hanging and shelf space, vertical radiator, picture rail.

Bedroom Two
11'2" x 9'9" (3.41 x 2.98)
Double glazed window to rear elevation, built in triple mirrored door wardrobe plus bookcase, radiator.

Bedroom Three
8'2" x 7'5" (2.51 x 2.28)
Double glazed window to rear elevation, radiator.

Family Bathroom
Fitted with a white suite comprising of panel bath with separate shower over, low level WC, wall hung vanity wash hand basin, extractor fan, shaver point, inset spotlights to ceiling, Karndean flooring radiator.

Occasional Loft Room
Accessed via a fitted ladder and light, Velux window and side elevation window, wood flooring, Built in storage cupboards.

Rear Garden
Area immediately behind house laid to patio, feature pergola, main area laid to artificial lawn bordered by sleeper shrub beds, fully fence enclosed with side pedestrian access gate, outside power points and outside tap. Access door to Gym/garages 1 and 2/storage. This garden has a south facing aspect and offers a good degree of privacy and seclusion.

Storage
9'7" x 8'11" (2.94 x 2.72)
Door to:

Gym
8'3" min x 7'3" (2.52 min x 2.23)
Power and light, laminate flooring, storage cupboards. Door to:

Garage 1
17'10" x 10'11" (5.45 x 3.33)
Fitted with remote controlled electric door,power and light, internal door into:

Garage 2
16'4" x 9'6" (5.00 x 2.90)
With Up and over door power and light.

Property Information
Traditional construction under a tiled roof.
Council: Gosport
Council Tax: B
EPC: TBC
Broadband: According to Ofcom Ultrafast broadband is available, however you must make your own enquiries.
Mobile Coverage: According to Ofcom EE,O2, Three and Vodafone offer Likely or Limited service, however you must make your own enquiries.
Parking: Two garages to rear

