



SCAN ME



15 Agrimony Close, Curbridge, Southampton,
Hampshire, SO30 2PL.

For more information

01489 570019

www.sbk4homes.com

3 Bedrooms, 2 Bathrooms

- Brand New Build
- End of Terrace Position
- Three Spacious Bedrooms
- Kitchen and Separate Utility Room Both With Integrated Appliances
- Stylish En-Suite To Main Bedroom
- Family Bathroom With Shower Over Bath
- Two Allocated Parking Spaces
- Lawned Rear Garden with Patio & Shed
- Electric Car Charging Point & Solar Panels
- Builders of Repute Charles Church



£1,650 PCM



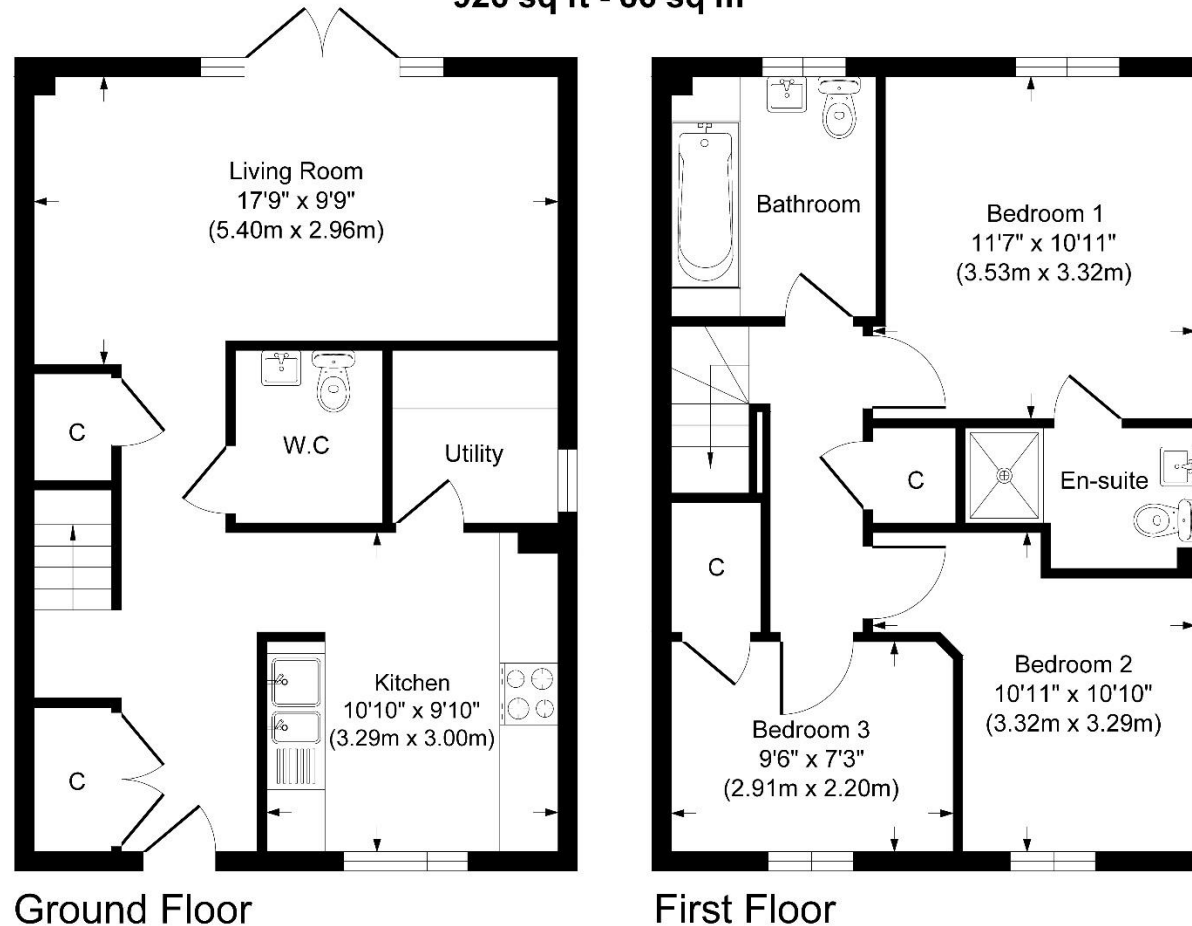
For more information

01489 570019

www.sbk4homes.com

3 Bedrooms, 2 Bathrooms

Approximate Gross Internal Area
926 sq ft - 86 sq m



Although every attempt has been made to ensure accuracy, all measurements are approximate.
This floorplan is for illustrative purposes only and not to scale.
Measured in accordance with RICS Standards.

Council Tax: Band - D
Payable £2,236.00
April 2025 - March 2026
Winchester City Council.

EPC: Band - B

Availability Date:
The property is available
Immediately

Pets:
No

Parking:
Yes - Two Allocated
Parking Spaces

For more information

01489 570019
www.sbk4homes.com



Discover Ridge Walk at Whiteley Meadows, an exciting new community by builders of the repute Charles Church. This brand new three-bedroom 'Rhossili' design offers contemporary living with a practical layout. The home features a beautifully appointed kitchen with fully integrated appliances, complemented by a separate utility room. The open plan living and dining area is bright and spacious with large French doors opening out onto the rear garden, creating a seamless flow between indoor and outdoor living. A large downstairs cloakroom completes the layout. Upstairs, there are three well-proportioned bedrooms, including a main bedroom with a stylish ensuite with double sized shower cubicle. The family bathroom is finished to a high standard, designed with comfort and benefits from an over the bath shower. Externally, the property offers two allocated parking spaces directly outside the front of the home and a lawned rear garden with a patio area, perfect for relaxing or entertaining. Located in the desirable Whiteley Meadows development, Ridge Walk offers the opportunity to rent a brand-new property in a peaceful setting with excellent access to local schools and shops.



For more information



01489 570019
www.sbk4homes.com