



SCAN ME

25 Merryfield, Titchfield Common, Fareham,  
Hampshire, PO14 4SF.



For more information

**01489 570019**  
[www.sbk4homes.com](http://www.sbk4homes.com)



# 25 Merryfield,

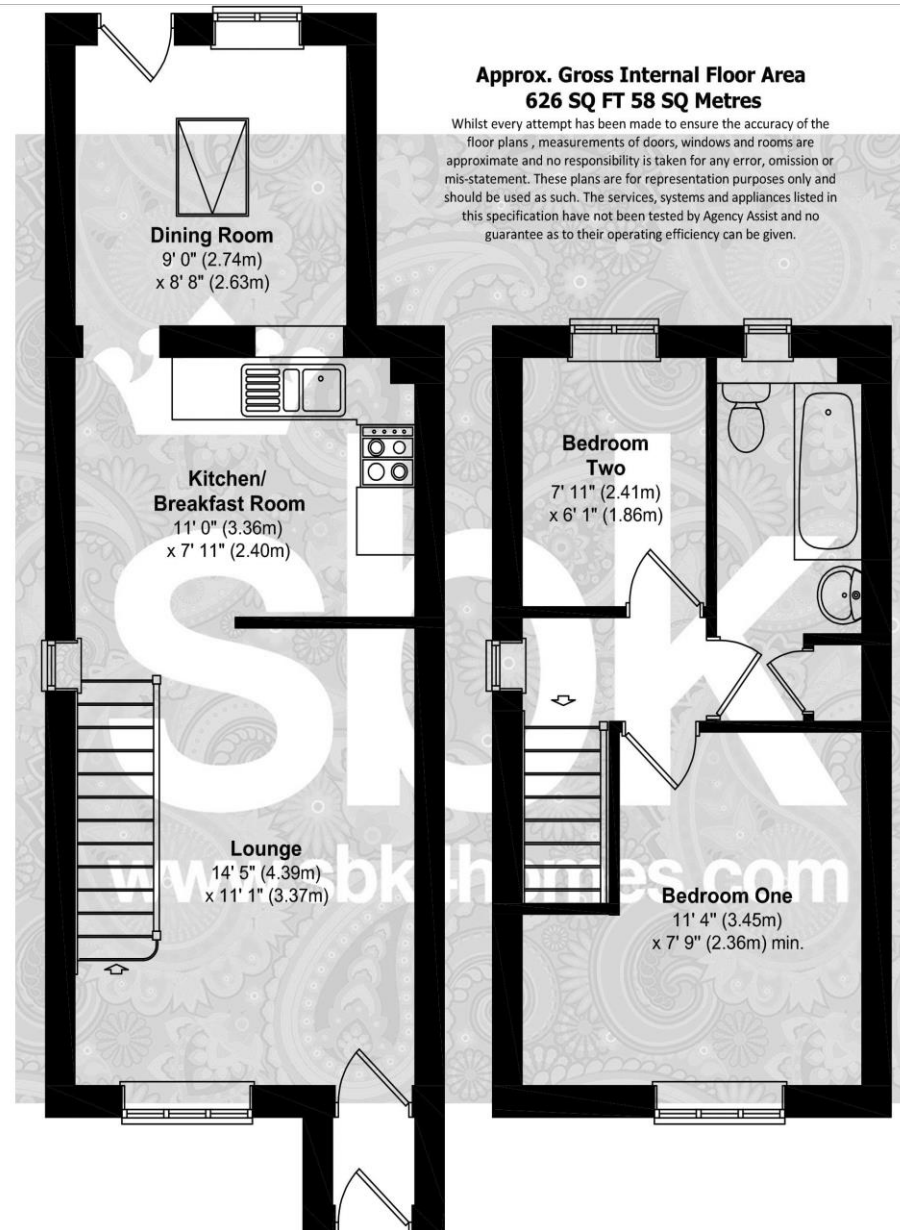
Titchfield Common, Fareham, PO14 4SF.

£1,250 PCM

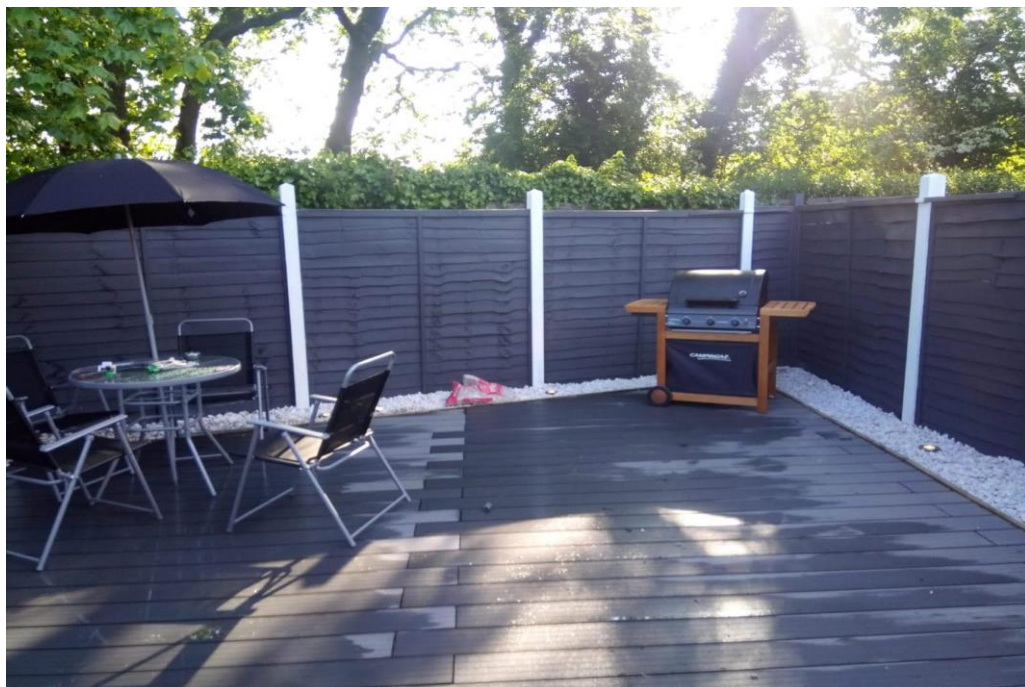
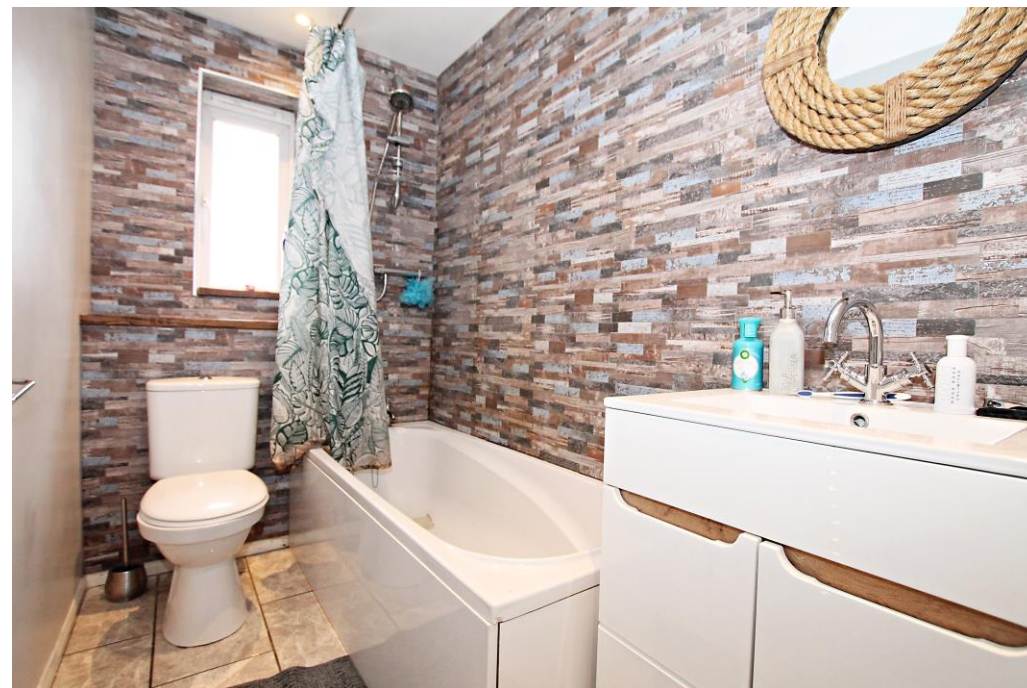
- End Terrace House
- Two Bedrooms
- Extended Ground Floor Accommodation
- Good Size Lounge
- Modern Fitted Kitchen
- Separate Dining Room
- Driveway Parking
- Cul De Sac Location
- Available Beginning of May
- Well Presented Throughout



# 25 Merryfield, Titchfield Common, Fareham, Hampshire, PO14 4SF. £1,250 PCM







#### ADDITIONAL INFORMATION

Council Tax Band

Band B which is payable to Fareham Borough Council.

The charge for this is £1,683.54

Availability Date

The property is available from the beginning of May

Length of Let

Initially offered on either a six or twelve month tenancy but the landlords intentions are for the property to be let on a longer term basis.

Pets

The landlord for this property has specified that pets are not permitted

Energy Performance Certificate

The rating for the property is C. To obtain a full report of the EPC please contact SBK.

Parking

The property has driveway parking to the side of the property.



For more information

**01489 570019**

**www.sbk4homes.com**