



SCAN ME



Flat 10 Ensign House, Providence Hill, Bursledon,
Southampton, Hampshire, SO31 8AP.

For more information

01489 570019
www.sbk4homes.com

2 Bedrooms, 2 Bathrooms

- Top Floor Apartment
- Two Double Bedrooms
- En-Suite & Main Family Bathroom
- Communal Lift To All Floors
- Private Balcony Over Looking Gardens
- Allocated & Visitor Parking
- Open Plan Lounge/Dining Room
- FULLY FURNISHED
- Gas Central Heating
- Easy Access to J8 of M27



£1,100 PCM

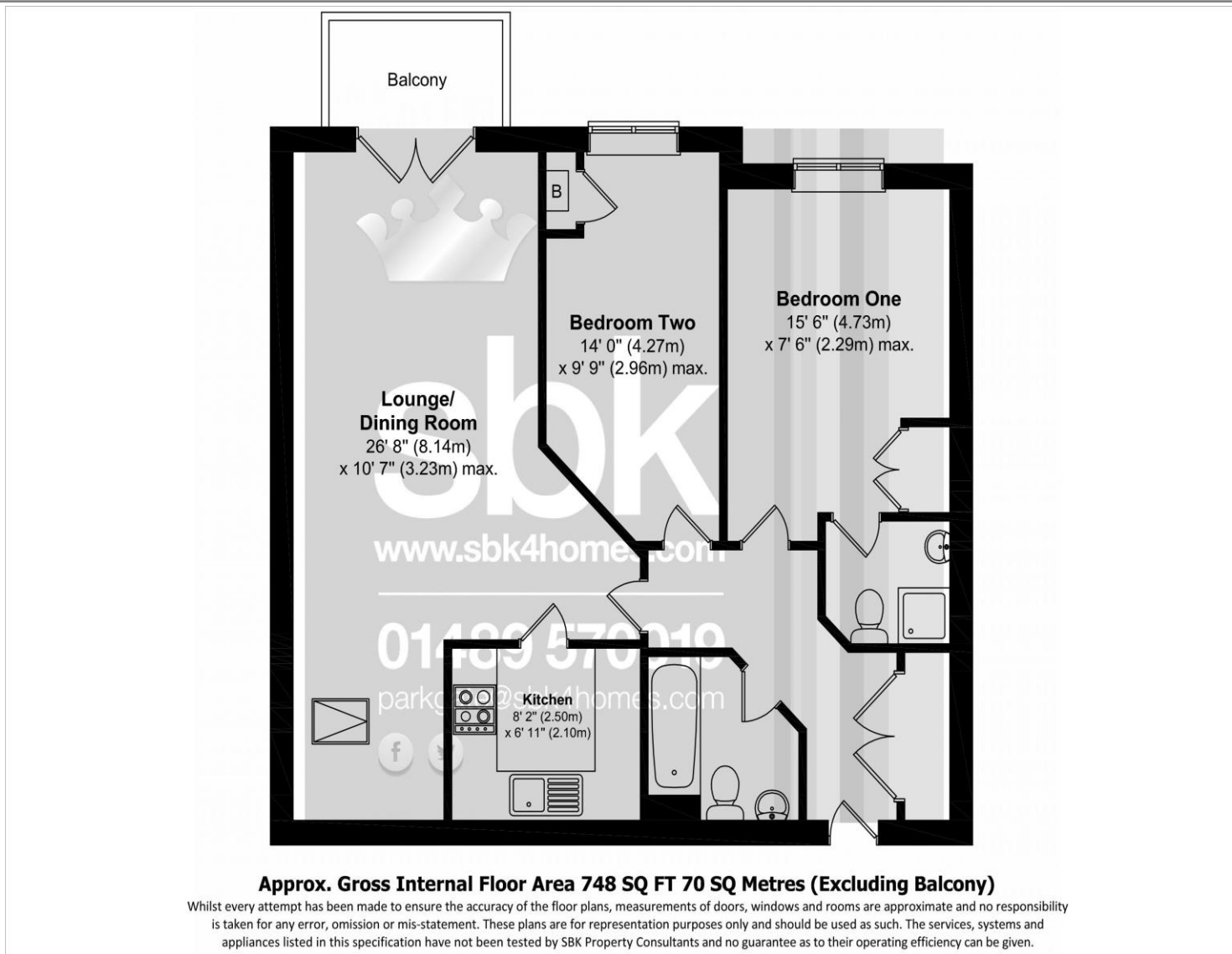


For more information

01489 570019

www.sbk4homes.com

2 Bedrooms, 2 Bathrooms



For more information

Council Tax: Band - B
Payable £1,635.27
April 2024 - March 2025
Eastleigh Council.

EPC: Band - B

Availability Date:
The property is available
from the middle of
August

Pets:
No

Parking:
Yes - One allocated
parking space

01489 570019
www.sbk4homes.com



Available to rent from the middle of August is this spacious top floor, two double bedroom apartment benefiting from the use of a lift and a balcony. The apartment was constructed in 2005 and it sits on the top floor within the private development of only 12 apartments. The generous accommodation enjoys two double bedrooms (the master bedroom boasting an en-suite shower room), a separate family bathroom with shower attachment, an open plan, yet clearly definable, lounge/dining room and a separate kitchen. The apartment also has its own private balcony accessed from the lounge and looks over the beautifully tended communal gardens. The property has allocated parking for one car and is available for a long term rental. To enquire further or to arrange a viewing, please contact the SBK Lettings Department.



For more information



01489 570019
www.sbk4homes.com