



SCAN ME



'Pastoral' Chapel Lane, Curdridge, Southampton,
Hampshire, SO32 2BB.

For more information

01489 570019
www.sbk4homes.com

4 Bedrooms, 2 Bathrooms

- Detached Family Home
- Stunning Semi Rural Location
- Large Plot With Gardener Included
- Four Double Bedrooms
- Lounge/Dining Room
- Separate Family Room
- En-suite & Family Bathroom
- Well Presented Throughout
- Available From Mid/End December
- Long Term Let



£2,500 PCM

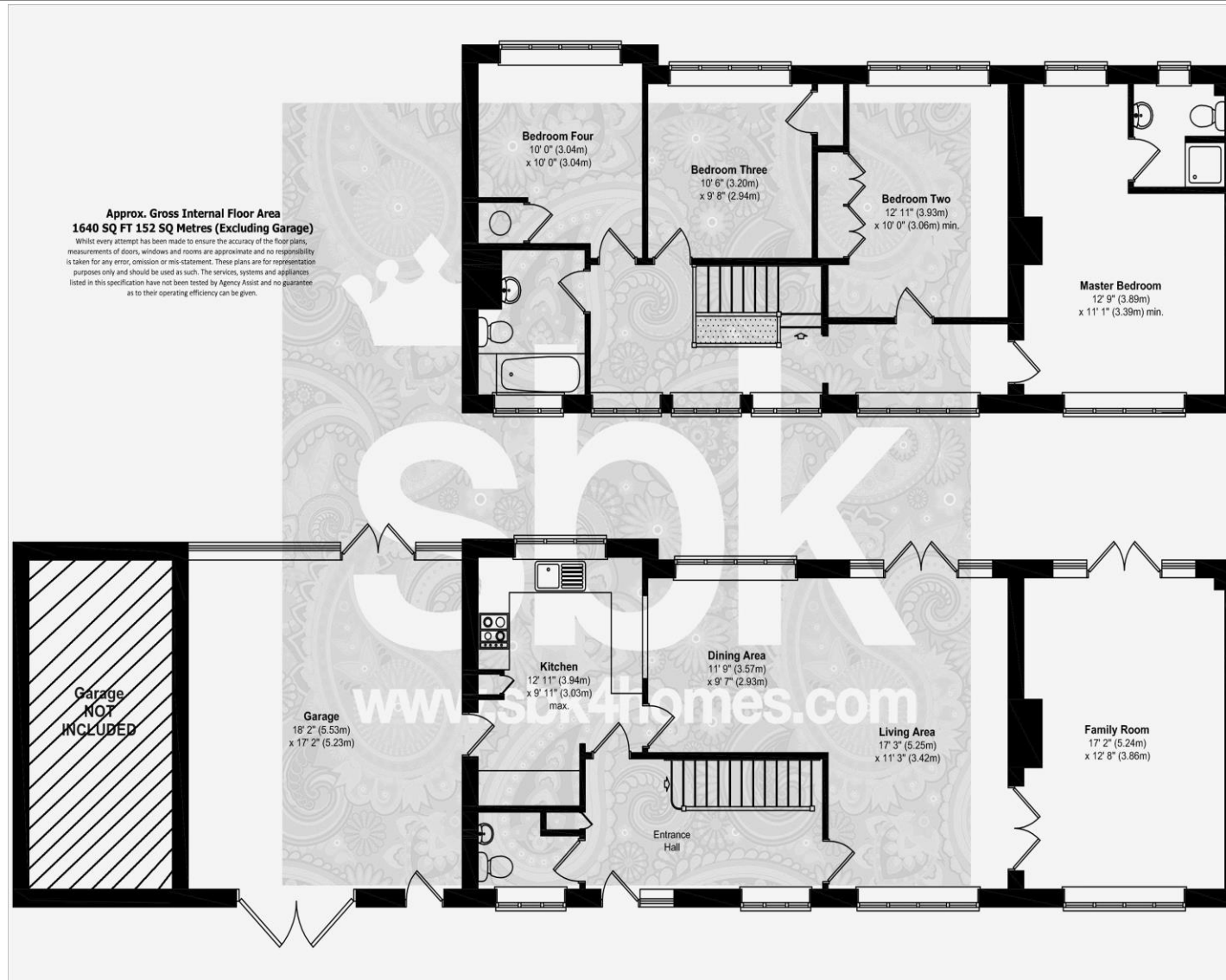


For more information

01489 570019

www.sbk4homes.com

4 Bedrooms, 2 Bathrooms



For more information

Council Tax: Band F
Payable £2,950.41
April 2023 – March 2024
Winchester City Council.

EPC: Band - E

Availability Date:
The property is available
from mid/end December.

Pets:
No.

Parking:
Yes – Ample
driveway parking
and garage.

01489 570019
www.sbk4homes.com



Available to rent is this superb detached family home which is located in the popular semi rural location of Chapel Lane, Curdridge, but still offering easy access to nearby Botley Village. The property sits on a large plot with ample parking to the front, a larger than average single garage and a large very private garden to the rear - a gardener is included within the rent. The accommodation comprises of an entrance hallway, lounge/dining room, additional family room, modern kitchen and ground floor cloakroom. To the first floor are four double bedrooms with the master bedroom benefiting from an en-suite shower room and to complete the accomodation is the separate family bathroom. The property has been maintained to a high standard with previous improvements including replacement carpets to the ground floor and a programme of redecoration throughout. There is the benefit of double glazing and the heating is powered by electric but through traditional wall radiators.



For more information



01489 570019
www.sbk4homes.com