



Ardeen Road, Intake, Doncaster, South Yorkshire **Offers Around £125,000**







Ardeen Road, Intake,
Doncaster, South
Yorkshire

Offers Around £125,000

Property Description

ONE IMMACULATLY PRESENTED HOME WHICH SHOULD BE VIEWED EARLY TO FULLY APPRECIATE THE OPPORTUNITY ON OFFER! Call to view NOW! Briefly comprising to the ground floor of a LIGHT AND AIRY entrance hall, bay fronted dining room, good size living room and a functional kitchen which has access to the ENCLOSED REAR GARDEN. To the first floor there are TWO SPACIOUS DOUBLE BEDROOMS, one single bedroom and fully tiled bathroom which boasts a three piece white suite. This fantastic home also has the added advantage of gas central heating, double glazing, off street parking and a single garage which has light and power connected to it. CALL TO VIEW TODAY !!! EPC GRADE IS D.

Our View

ARE YOU LOOKING FOR A SPACIOUS SEMI-DETACHED HOME WITH AMPLE OFF STREET PARKING, A GENEROUS REAR GARDEN AND MUCH MORE ?!! CALL US TODAY ON 01302 340444!

Location

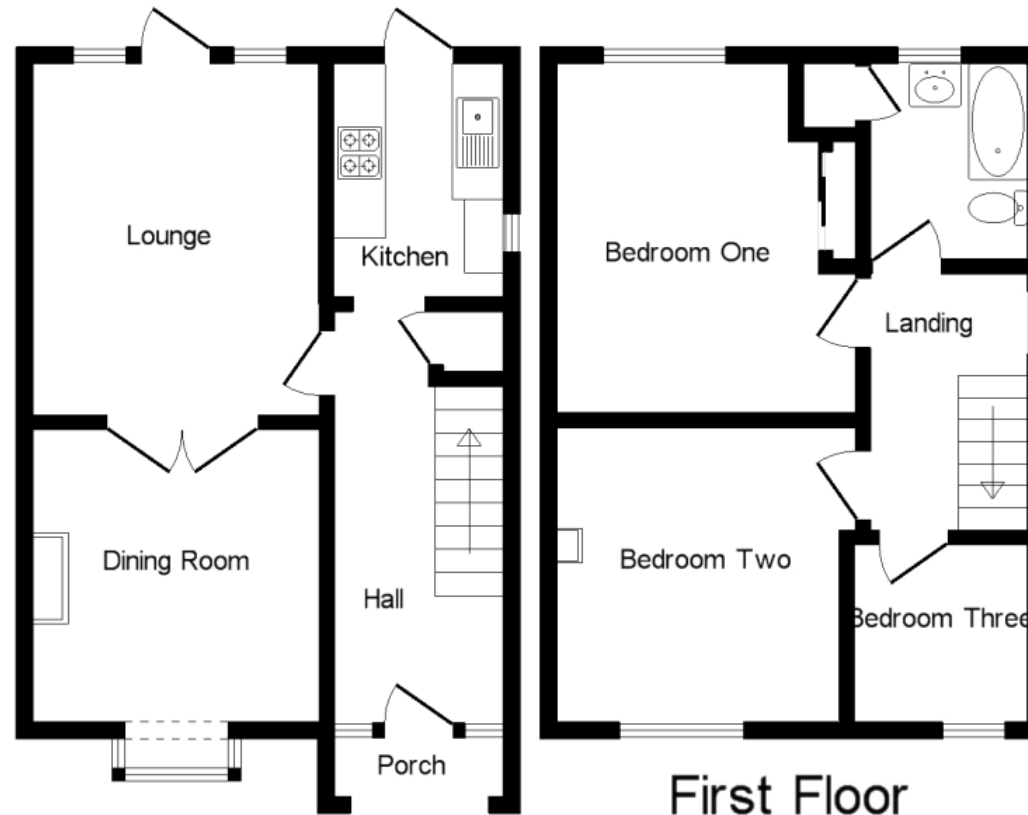
The property itself sits within the ever popular Intake suburb overlooking Doncaster Town Moor. The area also has good access to a wide range of local amenities including shops, supermarkets and a post-office, as well as bus services into Doncaster town centre. The property is approximately half a mile to Wheatley golf club, approximately a mile from Doncaster race-course and approximately a mile from The Dome leisure complex.



EPC GRADE D.
For full EPC please contact the branch

Gross internal area: 470.4 ft² (43.7 m²)
Net internal area: 438.9 ft² (40.8 m²)

Gross internal area: 452.0 ft² (42.0 m²)
Net internal area: 417.2 ft² (38.8 m²)



This plan is for illustrative purposes only. Plan not to scale.

Ground Floor

IMPORTANT NOTE TO PURCHASERS: We endeavour to make our sales particulars accurate and reliable, however, they do not constitute or form part of an offer or any contract and none is to be relied upon as statements of representation or fact. The services, systems and appliances listed in this specification have not been tested by us and no guarantee as to their operating ability or efficiency is given. All measurements have been taken as guide to prospective buyers only, and are not precise. Floor plans where included are not to scale and accuracy is not guaranteed. If you require clarification or further information on any points, please contact us, especially if you are travelling some distance to view. Fixtures and fittings other than those mentioned are to be agreed with the seller.

Your Move is a trading name of your-move.co.uk, registered in England at Newcastle House, Albany Court, Newcastle Business Park, Newcastle upon Tyne NE4 7YB (number 01864469).

*Calls may be recorded and/or monitored for training and/or security purposes.

Estate House, 56 Hall Gate, Doncaster, South
Yorkshire, DN1 3NE

01302 340444 * Doncaster@your-move.co.uk

