



Pethley Lane, Pointon Sleaford
£400,000 **Freehold**

QUENTIN
MARKS



Key Features



- Detached Family Home
- 4/5 Bedrooms
- Ensuite to Master
- Large Lounge
- Separate Dining Room

This modern detached family home is situated in an exclusive cul de sac of similar quality homes, and has recently undergone many improvements to include a new Airstream Heating System, replacement uPVC double glazing, fitted window shutters throughout, and new fencing to enclose the whole rear garden.

Offering versatile accommodation with the ground floor home office being of sufficient size to be utilised as a 5th bedroom, viewing is highly recommended.

Downstairs the principle rooms are all accessed off the main spacious hallway, with a large twin aspect lounge, large dining room, big downstairs WC, and a large breakfast kitchen which has been refitted and which includes an extensive range of units and appliances to include an integrated fridge, freezer & dishwasher, built in eye level

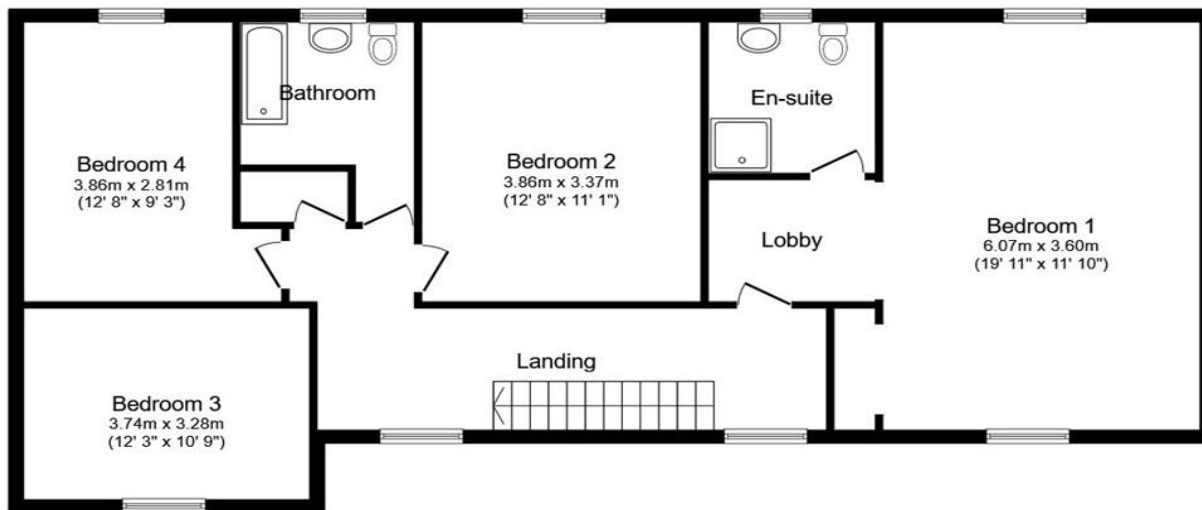


double oven, and with built in induction hob. There is also a moveable island unit with additional cupboard space. Off the kitchen will be found the utility room.

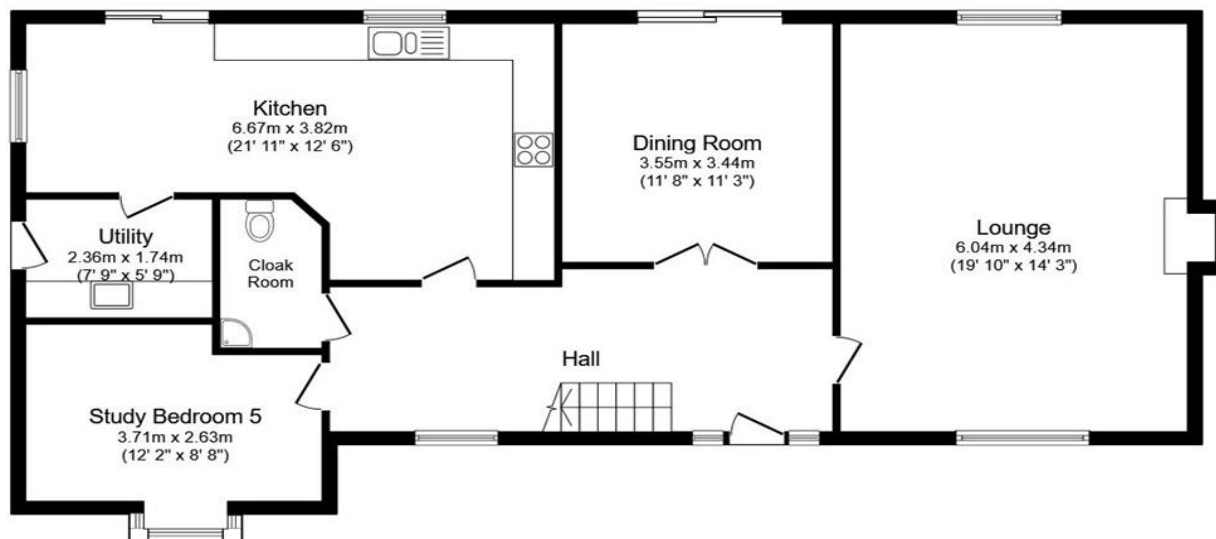
Upstairs, the landing space is very large, and gives access to the 4 double bedrooms, and the master bedroom features built in wardrobes and an ensuite.

Outside there are large gardens, and good driveway providing off road parking and access to the large double garage.





First Floor



Ground Floor


To view this property call Quentin Marks on:
01778 391600

Selling your property?

Contact us to arrange a **FREE** home valuation.

 01778 391600

 2 West Street, Bourne, Lincs, PE10 9NE

 sales@quentinmarks.co.uk

 www.quentinmarks.co.uk



SCAN FOR MORE
INFORMATION



Sharman Quinney Holdings Limited is registered in England and Wales under company number 4174227, Registered Office is Cumbria House, 16-20 Hockliffe Street, Leighton Buzzard, Bedfordshire, LU7 1GN. VAT Registration Number is 500 2481 05.

1: These particulars do not constitute part or all of an offer or contract. 2: The measurements indicated are supplied for guidance only and as such must be considered incorrect. 3: Potential buyers are advised to recheck the measurements before committing to any expense. 4: Sharman Quinney has not tested any apparatus, equipment, fixtures, fittings or services and it is the buyers interests to check the working condition of any appliances. 5: Sharman Quinney has not sought to verify the legal title of the property and buyers must obtain verification from their legal representative. 6: Intending purchasers will be asked to produce identification documentation at a later stage and we would ask your co-operation in order that there will be no delay in agreeing the sale. Ref: SQB100311 - 0003

