



Riseholme, Orton Goldhay Peterborough

£56,000 **Leasehold**

**QUENTIN
MARKS**



Key Features



125 Years remaining as of 16 Jan 1989

£Ask Agent Ground Rent pcm

Review due: Ask Agent

£Ask Agent Service Charge pcm

Review due: Ask Agent

- First Floor Studio Flat
- Private Entrance Access
- Bedsitting Room
- Kitchen
- Bathroom

This is a first floor studio flat which has the benefit of its own private entrance way rather than being communal. The entrance hall and staircase lead to an upstairs landing, where you'll find a bathroom, a bed/sitting room, and a kitchen off. The studio flat has the benefit of gas fired central heating and is offered for sale with vacant possession and NO



CHAIN.

ENTRANCE HALL

With uPVC double glazed entrance door leading to lobby and staircase to first floor.

FIRST FLOOR LANDING

With radiator, access to loft space, boiler cupboard having gas central heating boiler, airing cupboard with hot water cylinder.

LOUNGE/BEDROOM

5.1m x 2.6m (Max)

With radiator, sealed unit double glazed window to the rear, central heating thermostat, telephone point.

KITCHEN

2.6m X 2.1m (Max)

With single drainer stainless steel sink unit, base units with cupboards and drawers, worktops and eye level cupboards, electric cooker, fridge freezer, washing machine, sealed unit double glazed window to the rear.

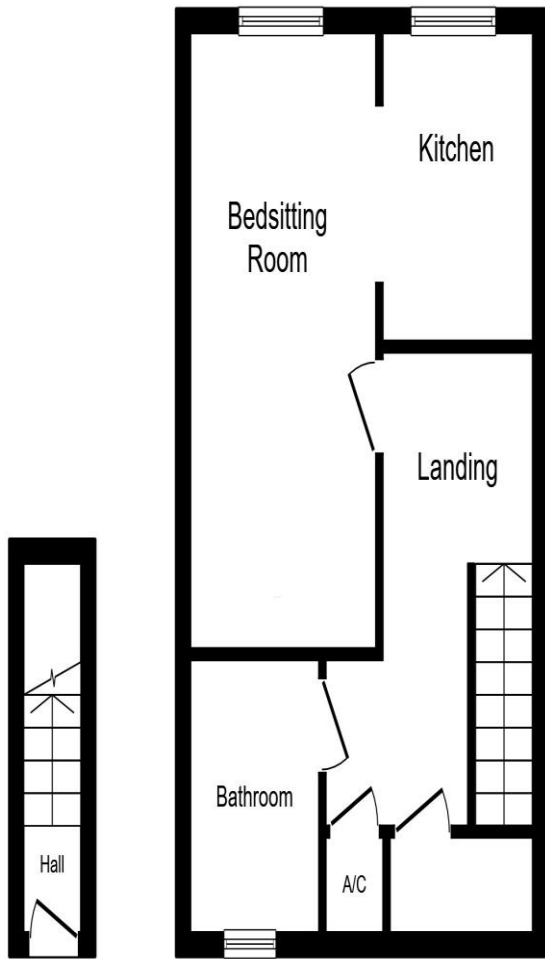
BATHROOM

With low level WC, pedestal wash hand basin, bath, sealed unit double glazed window to the front, radiator.

LEASEHOLD INFORMATION

This is a leasehold studio, and we await full lease information from the vendors solicitors,





**Ground
Floor**

Floor area 2.5
m² (27 sq.ft.)

First Floor
Floor area 36.5 m² (393 sq.ft.)

TOTAL: 39.0 m² (419 sq.ft.)

This floor plan is for illustrative purposes only. It is not drawn to scale. Any measurements, floor areas (including any total floor area), openings and orientations are approximate. No details are guaranteed, they cannot be relied upon for any purpose and do not form any part of any agreement. No liability is taken for any error, omission or misstatement. A party must rely upon its own inspection(s). Powered by www.Propertybox.io

To view this property call Quentin Marks on:
01778 391600

Selling your property?

Contact us to arrange a **FREE** home valuation.

 01778 391600

 2 West Street, Bourne, Lincs, PE10 9NE

 sales@quentinmarks.co.uk

 www.quentinmarks.co.uk



SCAN FOR MORE
INFORMATION



Quentin Marks is a trading name of Sharman Quinney Holdings Limited is registered in England and Wales under company number 4174227, Registered Office is Cumbria House, 16-20 Hockliffe Street, Leighton Buzzard, Bedfordshire, LU7 1GN. VAT Registration Number is 500 2481 05.

1: These particulars do not constitute part or all of an offer or contract. 2: The measurements indicated are supplied for guidance only and as such must be considered incorrect. 3: Potential buyers are advised to recheck the measurements before committing to any expense. 4: Sharman Quinney has not tested any apparatus, equipment, fixtures, fittings or services and it is the buyers interests to check the working condition of any appliances. 5: Sharman Quinney has not sought to verify the legal title of the property and buyers must obtain verification from their legal representative. 6: Intending purchasers will be asked to produce identification documentation at a later stage and we would ask your co-operation in order that there will be no delay in agreeing the sale. Ref: :SQB100093 - 0002