



Woodside Way, Ryton, Tyne And Wear **£145,000**







Woodside Way, Ryton, Tyne And Wear

£145,000



Semi Detached House
For full EPC please contact the branch

Property Description

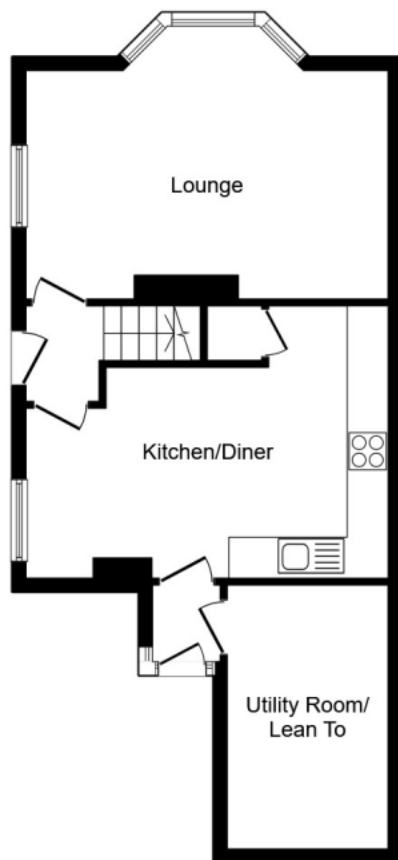
Deceptively spacious house situated on the edge of the popular Woodside Way Estate in Ryton. Recently decorated by the current owner includes, Entrance hall, Lounge with two double windows, one of which is a Bay window, Kitchen fitted with wall and base units, gas hob, electric oven, sink unit with mixer taps, cupboard and two double glazed windows, rear hall leading to Store House with up/over door. The Master Bedroom has two double glazed windows, fitted wardrobes, further double bedroom with cupboard and two double glazed windows. Family bathroom with bath, shower cubicle, WC and wash basin, vertical radiator and double glazed window. Stairs to Loft room which has two windows, En-suite with shower cubicle, WC and wash basin. Externally there is a decked patio area with perimeter trees giving a degree of privacy, driveway. EPC Grade D.

Our View

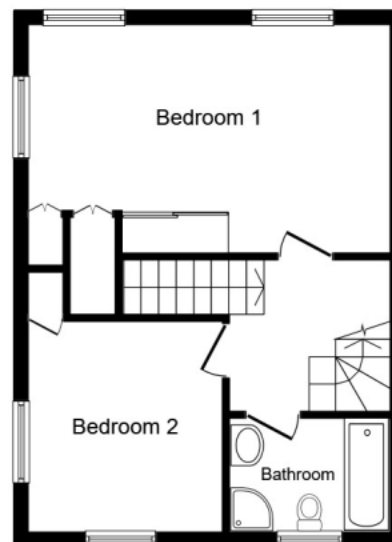
This property would make an ideal family home for a young family. Situated close to Ryton Village and public transport. Having the added advantage of a loft room which is divided where there is the sleeping area and an office area, there is also en-suite facilities to this room. Externally there is a store house with access from the rear hall which is fantastic for storage. Driveway parking.

Location

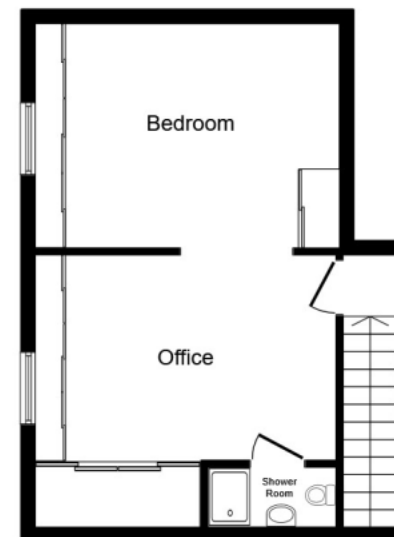
Ryton offers local amenities to include, shops, churches, hotels, public houses, schools and public transport. Access to major road links, the Metro Centre and Newcastle City.



Ground Floor



First Floor



Second Floor

Total floor area 128.0 sq. m. (1,378 sq. ft.) approx

This plan is for illustration purposes only and may not be representative of the property. Plan not to scale.

Powered by audioagent.com

IMPORTANT NOTE TO PURCHASERS: We endeavour to make our sales particulars accurate and reliable, however, they do not constitute or form part of an offer or any contract and none is to be relied upon as statements of representation or fact. The services, systems and appliances listed in this specification have not been tested by us and no guarantee as to their operating ability or efficiency is given. All measurements have been taken as guide to prospective buyers only, and are not precise. Floor plans where included are not to scale and accuracy is not guaranteed. If you require clarification or further information on any points, please contact us, especially if you are travelling some distance to view. Fixtures and fittings other than those mentioned are to be agreed with the seller.

Your Move is a trading name of your-move.co.uk, registered in England at Newcastle House, Albany Court, Newcastle Business Park, Newcastle upon Tyne NE4 7YB (number 01864469).

*Calls may be recorded and/or monitored for training and/or security purposes.

22 Main Street, Crawcrook, Ryton, Tyne And Wear, NE40 4NB

0191 413 5051 * Crawcrook@your-move.co.uk

