



Rosebery House, Old Carlisle Road, Moffat, Dumfriesshire **Offers Over £495,000**







Rosebery House, Old Carlisle Road, Moffat, Dumfriesshire

Offers Over £495,000



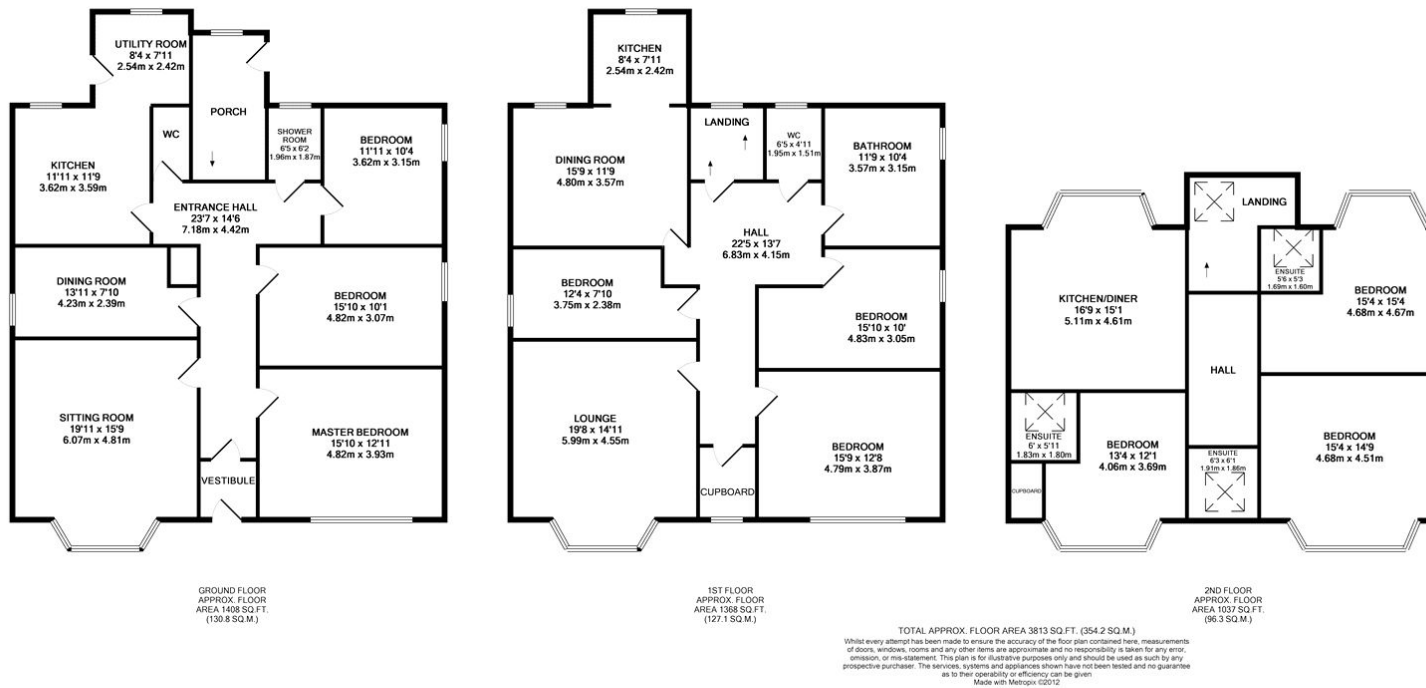
Sandstone Detached Home
For full EPC please contact the branch

Property Description

Your Move are delighted to welcome to the market this Victoria sandstone detached property arranged over three floors. This is an ideal opportunity to either purchase a successful business opportunity or large family home. The property comprises: entrance vestibule, entrance hall, lounge, master bedroom, bedroom two, bedroom three, dining room, family shower room/WC, kitchen and utility room. There is a separate access to the first and second floors. The first floor has a further three double bedrooms, luxury fitted bathroom suite/WC, spacious lounge and open plan kitchen/dining room. The second floor has a further three bedrooms all with en-suite facilities and an open plan kitchen/ family room. Externally there is approximately 1 acre of ground with a recently built triple garage, detached coach house with a further three outbuildings / stabling attached. The property has retained many of the period features to include

Our View

This beautifully finished property can be used in many different ways. Currently used as a residential home on ground floor with the business to the first and second floor. The property has a separate access for the this and the first floor provides a wonderful holiday let accommodation and to the first floor you have the self contained bed and breakfast facilities. This has been run as a successful business for many years due to the reputation and quality of property and services provided. The property could also be easily used as a substantial family home with grounds of approximately 1 acre you have large gardens around with a detached coach house, outbuildings and a newly built triple garage. To appreciate this opportunity on offer internal viewing is strongly recommended.



IMPORTANT NOTE TO PURCHASERS: We endeavour to make our sales particulars accurate and reliable, however, they do not constitute or form part of an offer or any contract and none is to be relied upon as statements of representation or fact. The services, systems and appliances listed in this specification have not been tested by us and no guarantee as to their operating ability or efficiency is given. All measurements have been taken as guide to prospective buyers only, and are not precise. Floor plans where included are not to scale and accuracy is not guaranteed. If you require clarification or further information on any points, please contact us, especially if you are travelling some distance to view. Fixtures and fittings other than those mentioned are to be agreed with the seller.

Your Move is a trading name of your-move.co.uk, registered in England at Newcastle House, Albany Court, Newcastle Business Park, Newcastle upon Tyne NE4 7YB (number 01864469).

*Calls may be recorded and/or monitored for training and/or security purposes.

Queensberry Street, Dumfries, DG1 1EX

01387 257666 * Dumfries@your-move.co.uk

