



# SIMMONS & SON



## Cornwall Avenue, Slough, SL2 1AY

**Price Guide £425,000 Freehold**

Located in Cornwall Avenue in Slough, this three-bedroom end terrace house presents an excellent opportunity for first-time buyers. Built in the post-war era, the property boasts a characterful design that combines modern living with a touch of history.

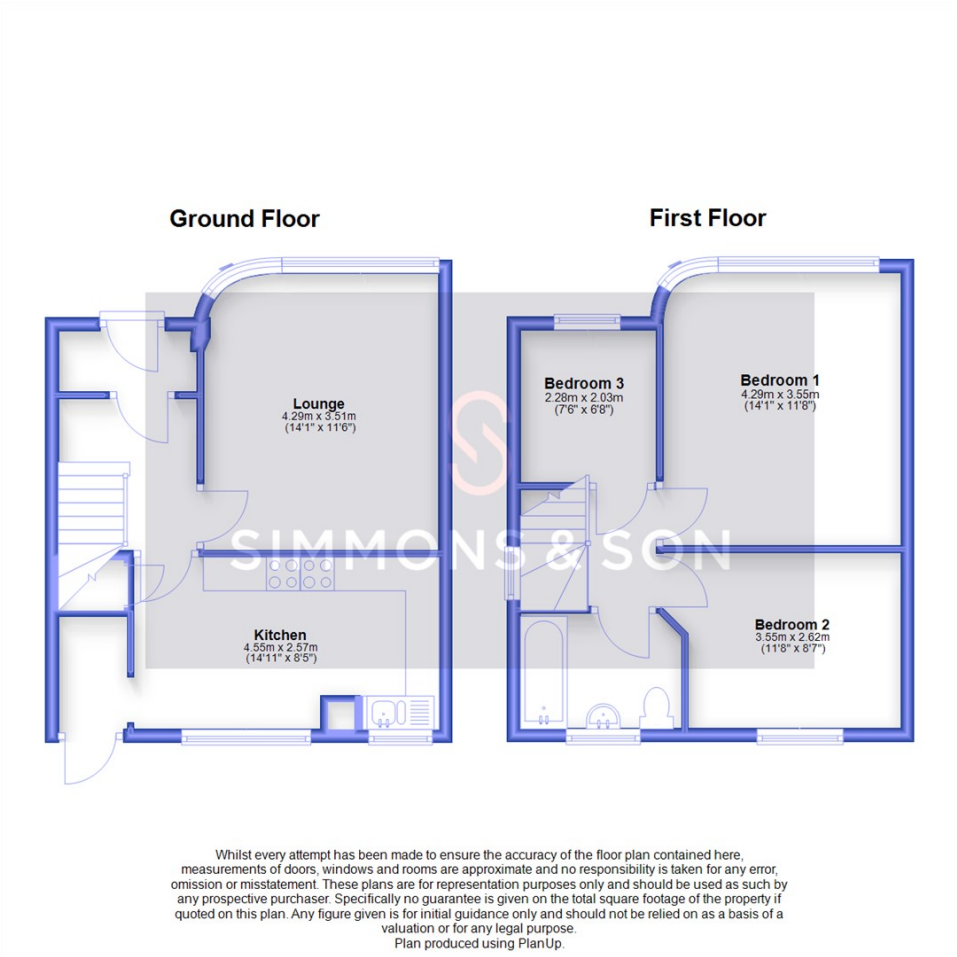
As you approach the home, you will appreciate the convenience of driveway parking, ensuring that you have a dedicated space for your vehicle. Upon entering, you are welcomed into a warm and inviting living space, perfect for both relaxation and entertaining. The layout is practical, providing ample room for family life.

The three well-proportioned bedrooms offer comfortable accommodation, making it an ideal setting for a growing family or those looking to establish their first home. The potential to extend the property, subject to planning permission, opens up exciting possibilities for personalisation and expansion, allowing you to create your dream living space.

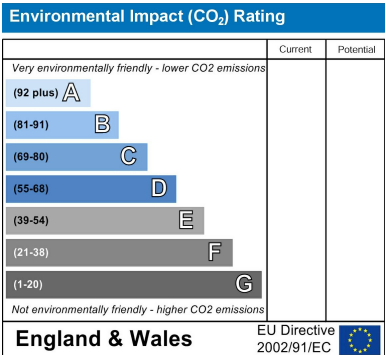
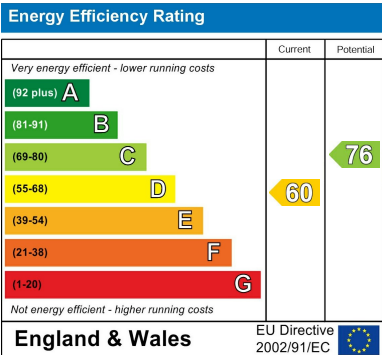
Situated in a friendly neighbourhood, this property is conveniently located near local amenities, schools, and transport links, making it an ideal choice for those seeking a vibrant community atmosphere. With its blend of charm, practicality, and potential, this end terrace house on Cornwall Avenue is a wonderful opportunity not to be missed.



Cornwall Avenue, Slough Slough, SL2 1AY



- Three Bedroom Family Home
- Potential To Extend STPP
- Driveway Parking For Two Cars
- Gas Central Heating & uPVC Double Glazing
- Excellent Transport Links To London & M4 and M40 Motorway
- Well Presented Throughout
- Close to Local Schools & Amenities
- Side Pedestrian Access
- EPC:D
- Council Tax Band-C



These particulars are intended as a general guide only and do not constitute any part of an offer or contract. All descriptions, dimensions, references to condition and necessary permissions for use and occupation, and other details are given without responsibility. Intending purchasers or tenants should satisfy themselves as to the accuracy of all statements and representations before entering into any agreement. We have not carried out a survey or checked the services, appliances or fixtures and fittings. Room dimensions should not be relied upon for carpets or furnishings. No employee or partner of B Simmons & Son has authority to make or give any representation or warranty in relation to the property. All negotiations for this purchase must be made through B Simmons & Son.