



# SIMMONS & SON



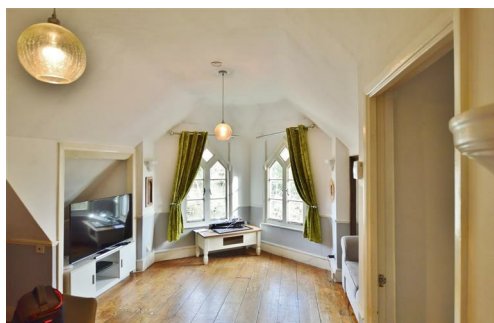
## Upton Park, Slough, SL1 2DA

**£1,100 PCM**

Welcome to this charming one-bedroom flat located in the picturesque area of Upton Park, Slough. This property boasts a cosy reception room, perfect for relaxing or entertaining guests. The bedroom is spacious and offers a comfortable retreat after a long day. You'll also find a well-maintained bathroom, ideal for your daily routines.

Situated next to a beautiful park, this flat provides a serene environment with lovely views and a peaceful atmosphere. With parking available for one vehicle, convenience is at your doorstep. Whether you're a couple starting a new chapter, or someone looking for a peaceful retreat, this property offers a wonderful opportunity to create a comfortable and welcoming home.

Don't miss out on the chance to own this delightful flat in Upton Park. Book a viewing today and envision the possibilities that this property holds for you!



# Upton Park, Slough, Berkshire, SL1 2DA



- One bedroom
- Gas central heated
- Council tax band - B £1443
- Second floor
- Double glazed
- EPC -d
- Part furnished
- Ample parking
- One weeks reservation required - £253.84
- Five week deposit required -£1269



Energy Efficiency Rating		Current	Potential
Very energy efficient - lower running costs			
(92 plus) A			
(81-91) B			
(69-80) C			
(55-68) D			
(39-54) E			
(21-38) F			
(1-20) G			
Not energy efficient - higher running costs			
<b>England &amp; Wales</b>	EU Directive 2002/91/EC		

Environmental Impact (CO <sub>2</sub> ) Rating		Current	Potential
Very environmentally friendly - lower CO <sub>2</sub> emissions			
(92 plus) A			
(81-91) B			
(69-80) C			
(55-68) D			
(39-54) E			
(21-38) F			
(1-20) G			
Not environmentally friendly - higher CO <sub>2</sub> emissions			
<b>England &amp; Wales</b>	EU Directive 2002/91/EC		