



SIMMONS & SON



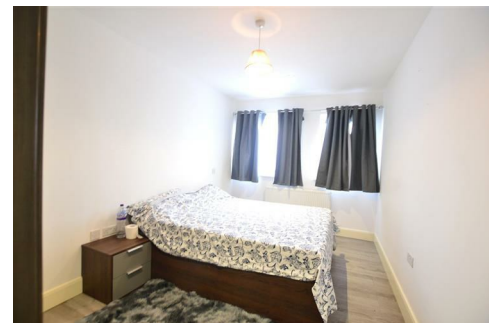
Chancellor House, Slough, SL1 4EH

£1,575 PCM

Welcome to Chancellor House in the heart of Slough, Berkshire! This charming ground floor flat boasts a modern bathroom, perfect for those seeking comfort and convenience. With two cosy bedrooms and a spacious reception room, this property offers a lovely space to call home.

Situated close to local shops and amenities, this flat provides easy access to everything you need. Whether you're looking to relax in the comfort of your new home or explore the vibrant surroundings, this property offers the best of both worlds.

Don't miss out on the opportunity to make this flat your own - it will be available at the end of June. Embrace the ease of flat living in this purpose-built gem.



Chancellor House, Farnburn Avenue Slough, Berkshire, SL1 4EH



- Two bedroom
- Ground floor
- Available end of June early July
- Permit parking
- Close to local shops and amenities
- EPC - C
- Council tax - B - £1697.33
- One weeks reservation deposit required - £363.46
- Five week deposit required - £1817



Energy Efficiency Rating		Current	Potential
Very energy efficient - lower running costs			
(92 plus) A			
(81-91) B		83	83
(69-80) C			
(55-68) D			
(39-54) E			
(21-38) F			
(1-20) G			
Not energy efficient - higher running costs			
England & Wales		EU Directive 2002/91/EC	

Environmental Impact (CO ₂) Rating		Current	Potential
Very environmentally friendly - lower CO ₂ emissions			
(92 plus) A			
(81-91) B		86	86
(69-80) C			
(55-68) D			
(39-54) E			
(21-38) F			
(1-20) G			
Not environmentally friendly - higher CO ₂ emissions			
England & Wales		EU Directive 2002/91/EC	