



Saffron Cottage, Water Lane, Radwinter, Saffron Walden OIEO £450,000

**Freehold**

**KH** Kevin  
Henry



# Key Features



- Two-bedroom Grade II Listed Cottage
- Beautifully presented with original features
- Two reception rooms
- Kitchen/Diner
- Modern bathroom

Situated in a peaceful location in the village of Radwinter yet close to the market town of Saffron Walden with all its amenities. The current owner has lovingly improved and maintained this immaculately presented cottage boasting excellent living space with exposed beams, spacious kitchen/diner, and modern bathroom. There are two good sized bedrooms on the first floor. There is a great homely feeling throughout. Outside the garden is breathtaking, it is truly a peaceful and tranquil setting ideal for relaxation or entertaining. There is a good size patio area with excellent lawn area and mature trees and shrubbery whilst the owner has also added a Summer House with power and lighting and a Games Room also with





power lighting. Finally, there is a workshop plus side access to the front of the property which has ample parking for up to four cars. EV Charging Point. This is a must see property!

Front  
Driveway parking for up to four cars.

Porch  
Entering to:

Living Room  
14'11 x 14'2

Reception Room  
14'8 x 14'7

Kitchen/dining area  
13'2 x 9'7

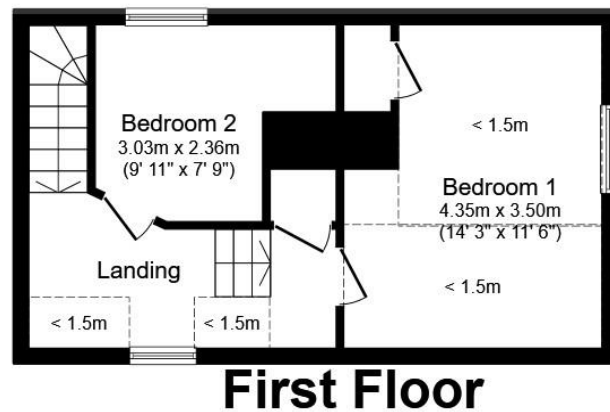
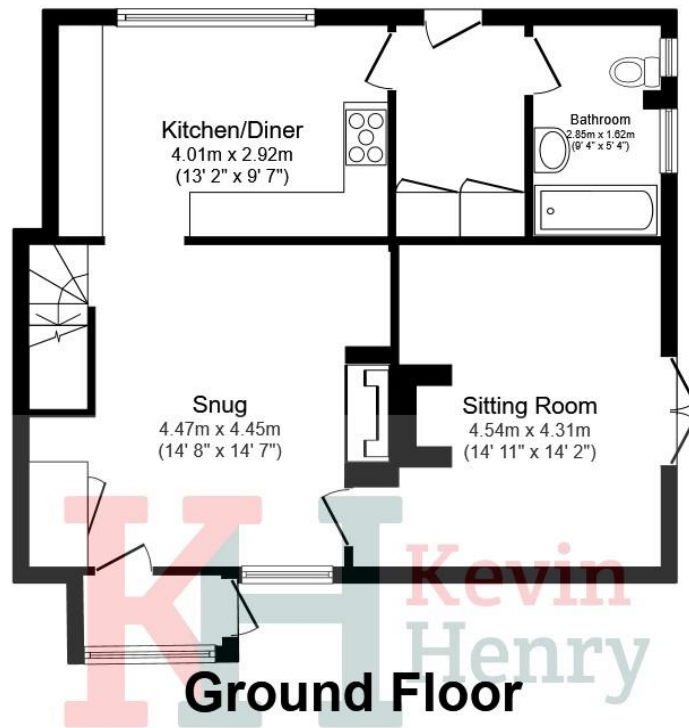
Rear lobby

Bathroom

First floor landing

Bedroom One





14'3 x 11'6

Bedroom Two  
9'11 x 7'9

Garden  
Stunning garden predominantly laid with lawn also housing summer house, games room and workshop

This floor plan is for illustrative purposes only. It is not drawn to scale. Any measurements, floor areas (including any total floor area), openings and orientation are approximate. No details are guaranteed, they cannot be relied upon for any purpose and they do not form part of any agreement. No liability is taken for any error, omission or misstatement. A party must rely upon its own inspection(s). Plan produced for Kevin Henry. Powered by [www.focalagent.com](http://www.focalagent.com)

To view this property call Kevin Henry on:  
01799 513632



# Selling your property?

Contact us to arrange a FREE home valuation.

 01799 513632

 1 Market Street, SAFFRON WALDEN, Essex, CB10 1JB

 sales@kevinhenry.co.uk

 [www.Kevinhenry.co.uk](http://www.Kevinhenry.co.uk)



 SCAN ME



Kevin Henry is a trading name of Sharman Quinney Holdings Limited which is registered in England and Wales under company number 4174227, Registered Office is Cumbria House, 16-20 Hockliffe Street, Leighton Buzzard, Bedfordshire, LU7 1GN. VAT Registration Number is 500 2481 05.

1: These particulars do not constitute part or all of an offer or contract. 2: The measurements indicated are supplied for guidance only and as such must be considered incorrect. 3: Potential buyers are advised to recheck the measurements before committing to any expense. 4: Kevin Henry has not tested any apparatus, equipment, fixtures, fittings or services and it is the buyers interests to check the working condition of any appliances. 5: Kevin Henry has not sought to verify the legal title of the property and buyers must obtain verification from their legal representative. 6: Intending purchasers will be asked to produce identification documentation at a later stage and we would ask your co-operation in order that there will be no delay in agreeing the sale. Ref: SAF103048 - 0006

