



Carters Croft, Ashdon, Saffron Walden £400,000 **Freehold**



# Key Features



- Detached three bedroom bungalow
- Well presented
- Excellent living space
- Bathroom and en-suite to main bedroom
- Large kitchen/Diner

Situated in the village of Ashdon this three bedroom bungalow provides excellent living space throughout. The large porch provides built in cupboard space and leads into the welcoming hallway that houses a Utility Room. The light, spacious lounge looks out on to the rear garden whilst the well equipped kitchen/diner provides ample space for a dining table. The three bedrooms are all a good size with the main bedroom boasting a shower en-suite alongside a family bathroom. The rear garden is a perfect space for entertaining or relaxation whilst to the front, the driveway provides ample parking. The highly regarded village of Ashdon boasts its own excellent primary school, nursery





school, church and inn whilst the market town of Saffron Walden with its array of shops, cafes and recreational facilities lies just 3 miles away. Transport links are all nearby.

Porch  
Storage cupboards

Hallway  
Airing cupboard and access to half boarded loft with pull down ladder.

Utility Room

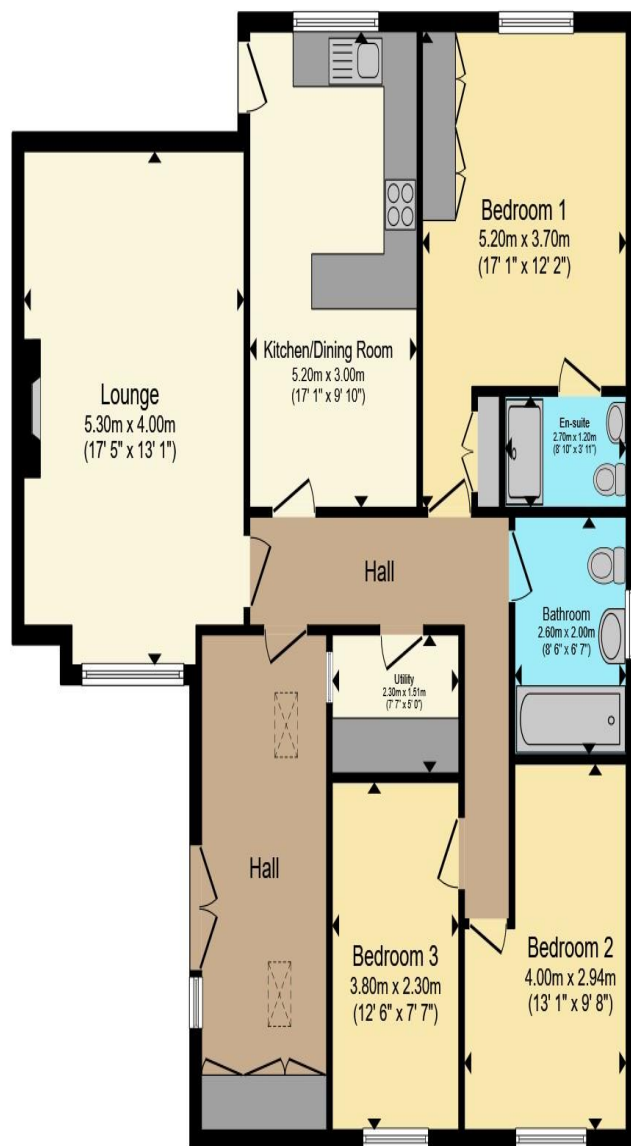
Lounge  
5.30m x 4.00m  
17'5" x 13'1"

Kitchen/Diner  
5.20m x 3.00m  
17'1" x 9'10"

Bedroom One  
5.20m max x 3.70m max  
17'1" max x 12'2" max  
Built in wardrobes

En-Suite Shower Room





Total floor area 109.1 sq.m. (1,175 sq.ft.) approx

This floor plan is for illustrative purposes only. It is not drawn to scale. Any measurements, floor areas (including any total floor area), openings and orientation are approximate. No details are guaranteed, they cannot be relied upon for any purpose and they do not form part of any agreement. No liability is taken for any error, omission or misstatement. A party must rely upon its own inspection(s). Powered by [www.propertybox.io](http://www.propertybox.io)



Bedroom Two  
4.00m max x 2.94m max  
13'1" x 9'8"

Bedroom Three  
3.80m x 2.30m  
12'6" x 7'7"

Bathroom

Garden  
Good size rear garden with lawn and patio.

Front  
Large driveway with space for several vehicles.

To view this property call Kevin Henry on:  
01799 513632

# Selling your property?

Contact us to arrange a FREE home valuation.

 01799 513632

 1 Market Street, SAFFRON WALDEN, Essex, CB10 1JB

 sales@kevinhenry.co.uk

 [www.Kevinhenry.co.uk](http://www.Kevinhenry.co.uk)



 SCAN ME



Kevin Henry is a trading name of Sharman Quinney Holdings Limited which is registered in England and Wales under company number 4174227, Registered Office is Cumbria House, 16-20 Hockliffe Street, Leighton Buzzard, Bedfordshire, LU7 1GN. VAT Registration Number is 500 2481 05.

1: These particulars do not constitute part or all of an offer or contract. 2: The measurements indicated are supplied for guidance only and as such must be considered incorrect. 3: Potential buyers are advised to recheck the measurements before committing to any expense. 4: Kevin Henry has not tested any apparatus, equipment, fixtures, fittings or services and it is the buyers interests to check the working condition of any appliances. 5: Kevin Henry has not sought to verify the legal title of the property and buyers must obtain verification from their legal representative. 6: Intending purchasers will be asked to produce identification documentation at a later stage and we would ask your co-operation in order that there will be no delay in agreeing the sale. Ref: SAF103766 - 0001

