



Blacklands Close, Saffron Walden **Freehold £675,000**

KH Kevin
Henry

Key Features

3 1 D E

- Detached three bedroom bungalow
- Excellent living space
- Offered chain free
- En-suite to main bedroom
- Conservatory

Set in a popular cul-de-sac close to the town centre, this bright and airy three-bedroom bungalow offers generous and versatile living space, ideal for families or those seeking single-level living.

The property features a large lounge, three well-proportioned double bedrooms-including a main bedroom with en-suite-and a lovely conservatory that overlooks the beautifully maintained rear garden. A well-equipped kitchen, family bathroom, and useful utility room complete the interior layout.

There is excellent potential to extend into the loft space (subject to planning permission), adding further value and flexibility.

Outside, the impressive rear garden boasts a spacious lawn, well-tended flower beds, and

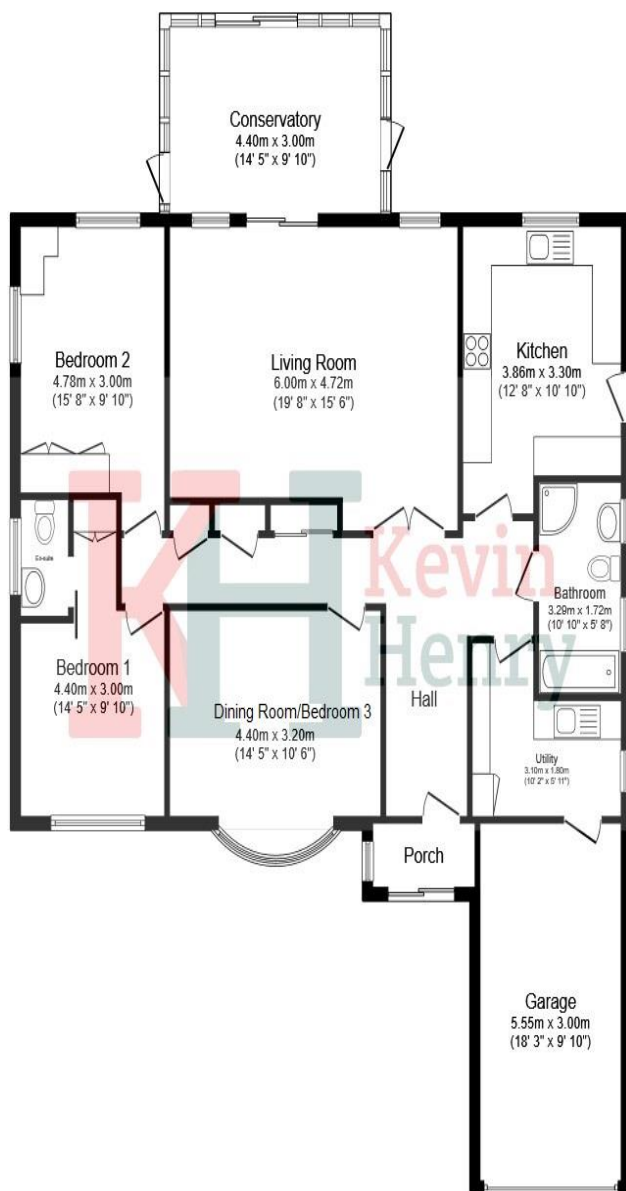


a patio area perfect for entertaining or relaxing. To the front, there is ample driveway parking and access to a garage. This charming bungalow offers both comfort and convenience in a sought-after location-an opportunity not to be missed. This is a rare opportunity to secure a truly exceptional home-schedule your viewing today!

Saffron Walden is a fine old market town with a good range of shopping, schooling and recreational facilities, including the renowned Saffron Hall, which is situated at the County High School. The town also boasts an independent, award-winning cinema showing mainstream and art house films, a museum and art galleries. There are several sports facilities, including The Lord Butler Fitness and Leisure Centre, with its two swimming pools, squash and tennis courts, health suite, gym and creche. Audley End mainline station (with fast trains to Liverpool Street and Cambridge) is just two miles distance and the M11 access point at Stump Cross 4 miles.

Porch





Hallway
Storage cupboard and airing cupboard.

Living Room - 19'8" x 15'6" (6.00m x 4.72m)

Kitchen - 12'8" x 10'10" (3.86m x 3.30m)

Conservatory - 14'5" x 9'10" (4.40m x 3.00m)

Dining Room/Bedroom Three - 14'5" x 10'6" (4.40m x 3.20m)

Bedroom One - 14'5" x 9'10" (4.40m x 3.00m) Built in wardrobes.

En-Suite

Bedroom Two - 15'8" x 9'10" (4.78m x 3.00m) Built in wardrobes

Bathroom

Utility Room

Garden
Private rear garden with lawn and patio area with well kept borders.

This floor plan is for illustrative purposes only. It is not drawn to scale. Any measurements, floor areas (including any total floor area), openings and orientation are approximate. No details are guaranteed, they cannot be relied upon for any purpose and they do not form part of any agreement. No liability is taken for any error, omission or misstatement. A party must rely upon its own inspection(s). Powered by www.focalagent.com

To view this property call Kevin Henry on:
01799 513632

Selling your property?

Contact us to arrange a FREE home valuation.

 01799 513632

 1 Market Street, SAFFRON WALDEN, Essex, CB10 1JB

 sales@kevinhenry.co.uk

 www.Kevinhenry.co.uk



 SCAN ME



Kevin Henry is a trading name of Sharman Quinney Holdings Limited which is registered in England and Wales under company number 4174227, Registered Office is Cumbria House, 16-20 Hockliffe Street, Leighton Buzzard, Bedfordshire, LU7 1GN. VAT Registration Number is 500 2481 05.

1: These particulars do not constitute part or all of an offer or contract. 2: The measurements indicated are supplied for guidance only and as such must be considered incorrect. 3: Potential buyers are advised to recheck the measurements before committing to any expense. 4: Kevin Henry has not tested any apparatus, equipment, fixtures, fittings or services and it is the buyers interests to check the working condition of any appliances. 5: Kevin Henry has not sought to verify the legal title of the property and buyers must obtain verification from their legal representative. 6: Intending purchasers will be asked to produce identification documentation at a later stage and we would ask your co-operation in order that there will be no delay in agreeing the sale. Ref: SAF103376 - 0005

