



Pilgrim Close, Great Chesterford, Saffron Walden £350,000 **Freehold**

Key Features



- Three-bedroom house
- Spacious lounge/diner
- Well presented
- Modern kitchen
- South-West facing rear garden

A spacious three-bedroom home featuring a spacious open-plan lounge and dining area, ideal for modern living. The stylish, well-equipped kitchen offers both functionality and flair.

Upstairs, you'll find three generously sized bedrooms and a contemporary family bathroom.

Outside, the property boasts a charming garden with a patio area and lawn, perfect for relaxing or hosting gatherings. Additional benefits include a garage en bloc and a driveway providing convenient parking. Great Chesterford is arguably one of the most picturesque and popular villages in the area. It has its own pubs / restaurants, shop, medical centre, hotel, highly regarded



primary school, railway station with trains to Cambridge and Liverpool Street and a recreation ground with an outstanding village hall. The fine old market town of Saffron Walden is 4 miles to the south, with the university city of Cambridge to the north and the M11 access point is within one mile.

Porch

Lounge/Diner
24'1 x 15'11 max
7.33m x 4.84m

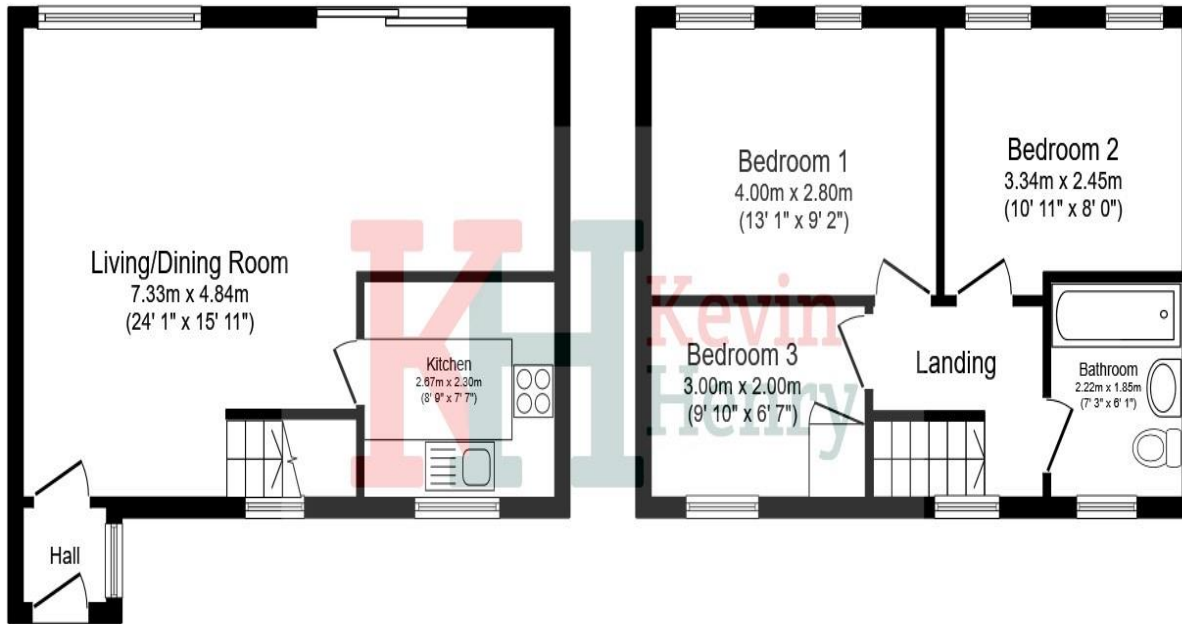
Kitchen
8'9 x 7'7
2.67m x 2.3m

Landing

Bedroom One
13'1 x 9'2
4.00m x 2.80m

Bedroom Two
10'11 x 8'0
3.34m x 2.45m





Ground Floor

First Floor

Bedroom three
9'10 x 6'7
3.00m x 2.00m
Built in storage cupboard

Bathroom

Garden
Part patio, part lawn.

Front
Parking for one car

Garage En-Bloc

Selling your property?

Contact us to arrange a FREE home valuation.

 01799 513632

 1 Market Street, SAFFRON WALDEN, Essex, CB10 1JB

 sales@kevinhenry.co.uk

 www.Kevinhenry.co.uk



 SCAN ME



Kevin Henry is a trading name of Sharman Quinney Holdings Limited which is registered in England and Wales under company number 4174227, Registered Office is Cumbria House, 16-20 Hockliffe Street, Leighton Buzzard, Bedfordshire, LU7 1GN. VAT Registration Number is 500 2481 05.

1: These particulars do not constitute part or all of an offer or contract. 2: The measurements indicated are supplied for guidance only and as such must be considered incorrect. 3: Potential buyers are advised to recheck the measurements before committing to any expense. 4: Kevin Henry has not tested any apparatus, equipment, fixtures, fittings or services and it is the buyers interests to check the working condition of any appliances. 5: Kevin Henry has not sought to verify the legal title of the property and buyers must obtain verification from their legal representative. 6: Intending purchasers will be asked to produce identification documentation at a later stage and we would ask your co-operation in order that there will be no delay in agreeing the sale. Ref: SAF103281 - 0001

