



Pelham Road, Clavering Saffron Walden £680,000 **Freehold**



# Key Features



- Four Bedroom Detached Home
- Three Reception Rooms
- Office
- Double Garage
- Modern Kitchen

You enter into the light and airy entrance hall, to the left you will find the office which has a large window overlooking the rear garden this is a lovely space for those that are working from home. The living room is a fantastic place to relax with a beautiful feature fireplace with wood burning stove and stone surround, sliding doors lead you out to the rear garden and an opening to the dining area. The recently refitted kitchen has ample wall and base units with worktops over, one and half sink and drainer, gas hob with extractor over, built in oven and microwave, integrated washer dryer, dishwasher and wine cooler. Cloakroom completes the downstairs accommodation. On the first floor there are four bedrooms



with the master having a dressing table, a range of fitted wardrobes and ensuite shower room and two further bedrooms with the benefit of built in wardrobes. A modern family bathroom completes this floor.

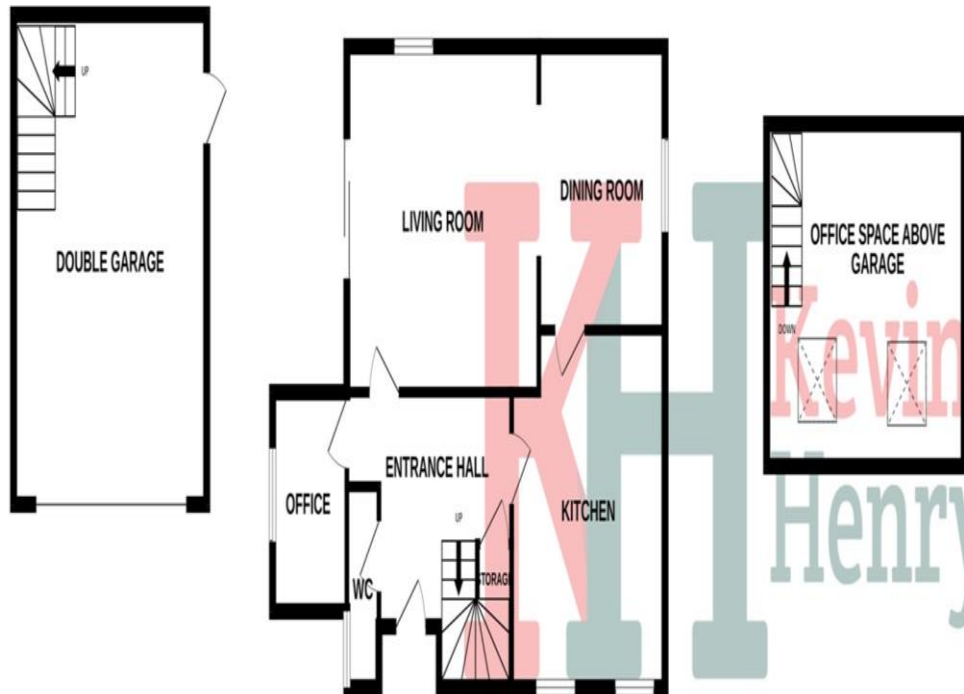
Outside there is a lovely enclosed rear garden which is mainly laid to lawn with well established shrub borders. There are two patio areas providing the perfect spots to unwind and enjoy the beautiful views.

The double garage has electric roller doors and benefits from have power and lighting. The space above the garage has been converted to create an office space or workshop area. There is a newly laid asphalt driveway which provides off road parking for four cars.

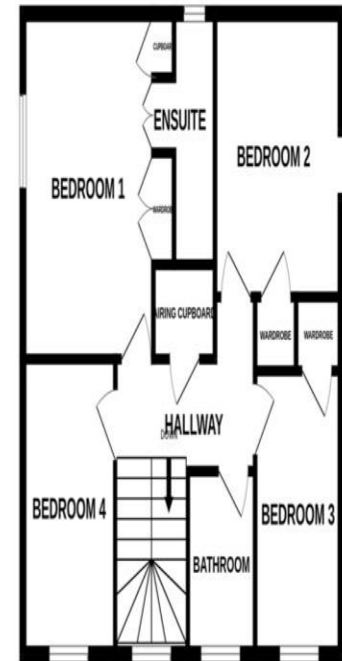
Clavering is a very sought-after village with local amenities including an outstanding Primary School, local convenience store, two pubs and gym. The market towns of Saffron Walden and Bishop's Stortford are easily reachable, and transport-wise there are mainline stations at Audley End and Bishop's



## GROUND FLOOR



## 1ST FLOOR



Stortford (Liverpool Street) plus access to the M11 at Junction 8. Stansted Airport is within 9 miles.

Hallway

Living Room 16'4 x 12'3

Dining Area 10'9 x 10'0

Kitchen 13'1 x 12'4

Study 7'9 x 6'4

Cloakroom

First Floor Landing

Bedroom One 12'3 x 11'1

Ensuite

Bedroom Two 10'9 x 10'1

Bedroom Three 10'0 x 7'4

Bedroom Four 10'1 x 8'0

Family Bathroom

Outside

Whilst every attempt has been made to ensure the accuracy of the floorplan contained here, measurements of doors, windows, rooms and any other items are approximate and no responsibility is taken for any error, omission or mis-statement. This plan is for illustrative purposes only and should be used as such by any prospective purchaser. The services, systems and appliances shown have not been tested and no guarantee as to their operability or efficiency can be given.

Made with Metropix ©2023

To view this property call Kevin Henry on: 01799 513632

# Selling your property?

Contact us to arrange a FREE home valuation.

 01799 513632

 1 Market Street, SAFFRON WALDEN, Essex, CB10 1JB

 [sales@kevinhenry.co.uk](mailto:sales@kevinhenry.co.uk)

 [www.Kevinhenry.co.uk](http://www.Kevinhenry.co.uk)



 SCAN ME



Kevin Henry is a trading name of Sharman Quinney Holdings Limited which is registered in England and Wales under company number 4174227, Registered Office is Cumbria House, 16-20 Hockliffe Street, Leighton Buzzard, Bedfordshire, LU7 1GN. VAT Registration Number is 500 2481 05.

1: These particulars do not constitute part or all of an offer or contract. 2: The measurements indicated are supplied for guidance only and as such must be considered incorrect. 3: Potential buyers are advised to recheck the measurements before committing to any expense. 4: Kevin Henry has not tested any apparatus, equipment, fixtures, fittings or services and it is the buyers interests to check the working condition of any appliances. 5: Kevin Henry has not sought to verify the legal title of the property and buyers must obtain verification from their legal representative. 6: Intending purchasers will be asked to produce identification documentation at a later stage and we would ask your co-operation in order that there will be no delay in agreeing the sale. Ref: SAF102509 - 0007

